

7428

*[Handwritten scribble]*

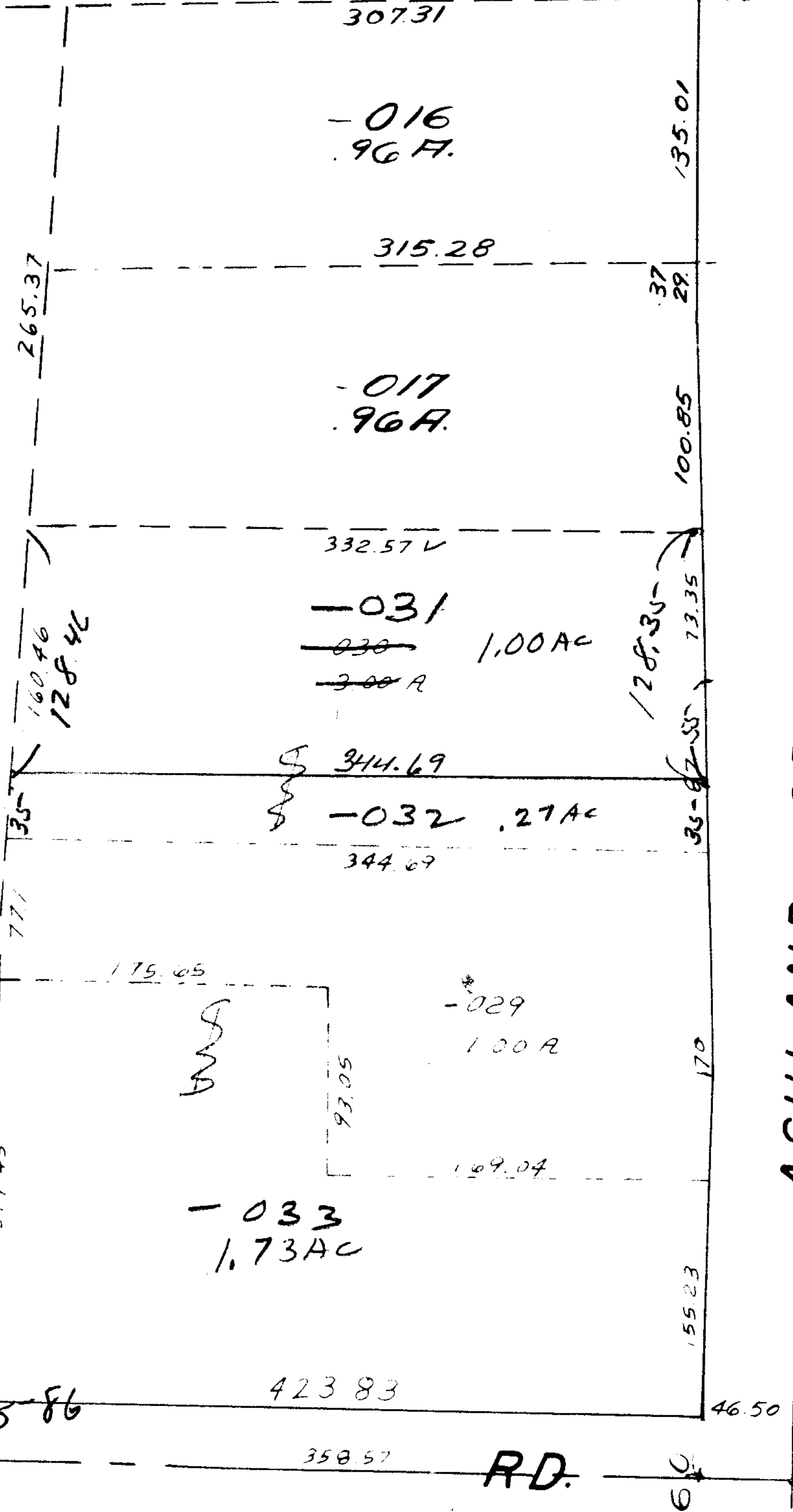
463+99.27  
463+26.69  
7256

**40**

3.00 AC  
- 1.00 AC  
- 2.00 AC  
= .27 AC  
- 1.73 AC

7428

APPROVED	
LORAIN CO.	
MAP DEPT.	
DATE	10-1-73
PAGE	18-00-030D
BY	L. W. Hall
VOID AFTER	



7335  
55  
12835

ASHLAND OBERLIN



Peck Nadsworth

R.D.

D. S.  
8-5-86