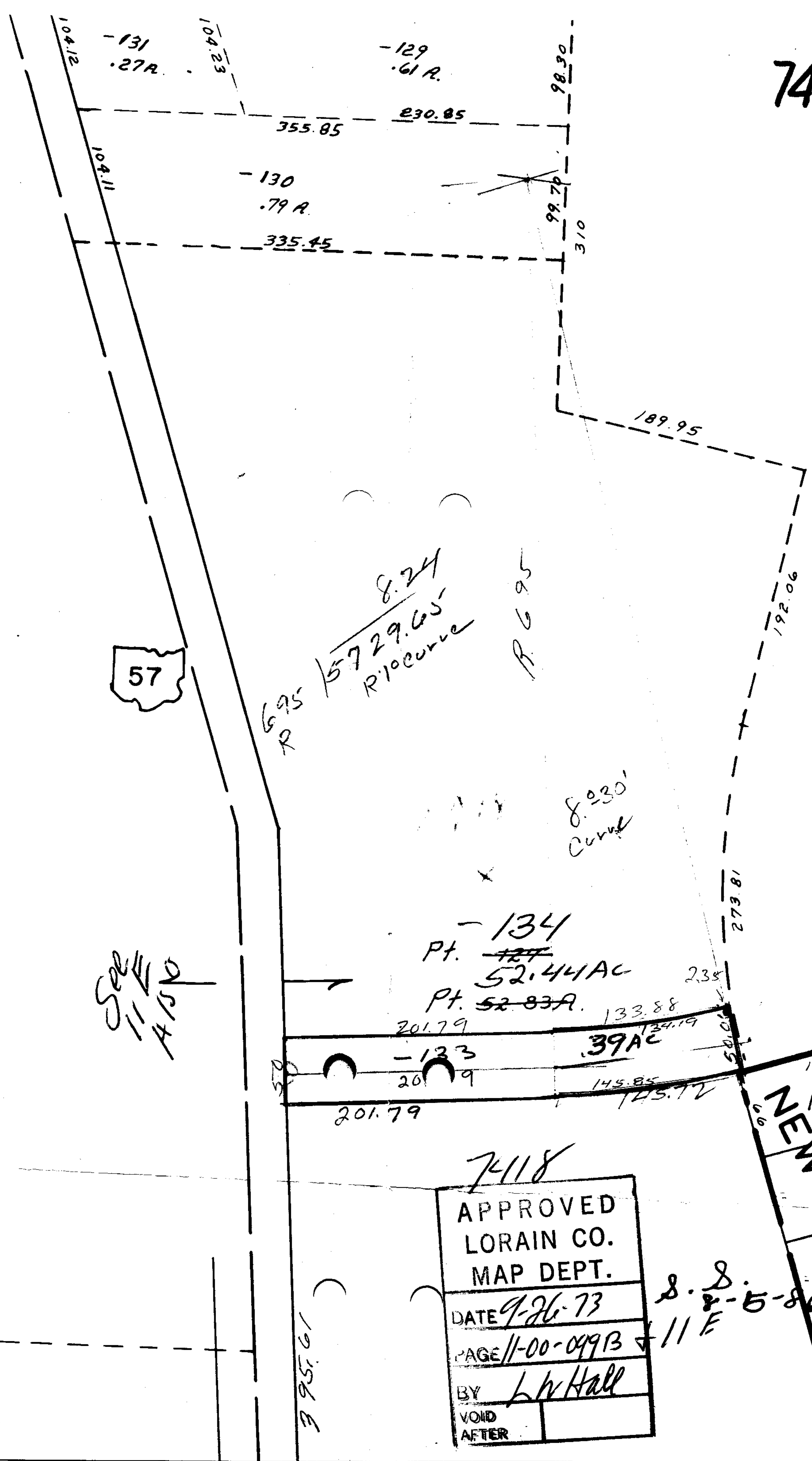


7418

SEE 11-E



See 11-E ALSO

6.95 R  
8.24  
57.29.65  
R 10 curve

-134  
Pt. ~~127~~  
52.44 AC  
Pt. 52.83 AC

8.230  
Curve

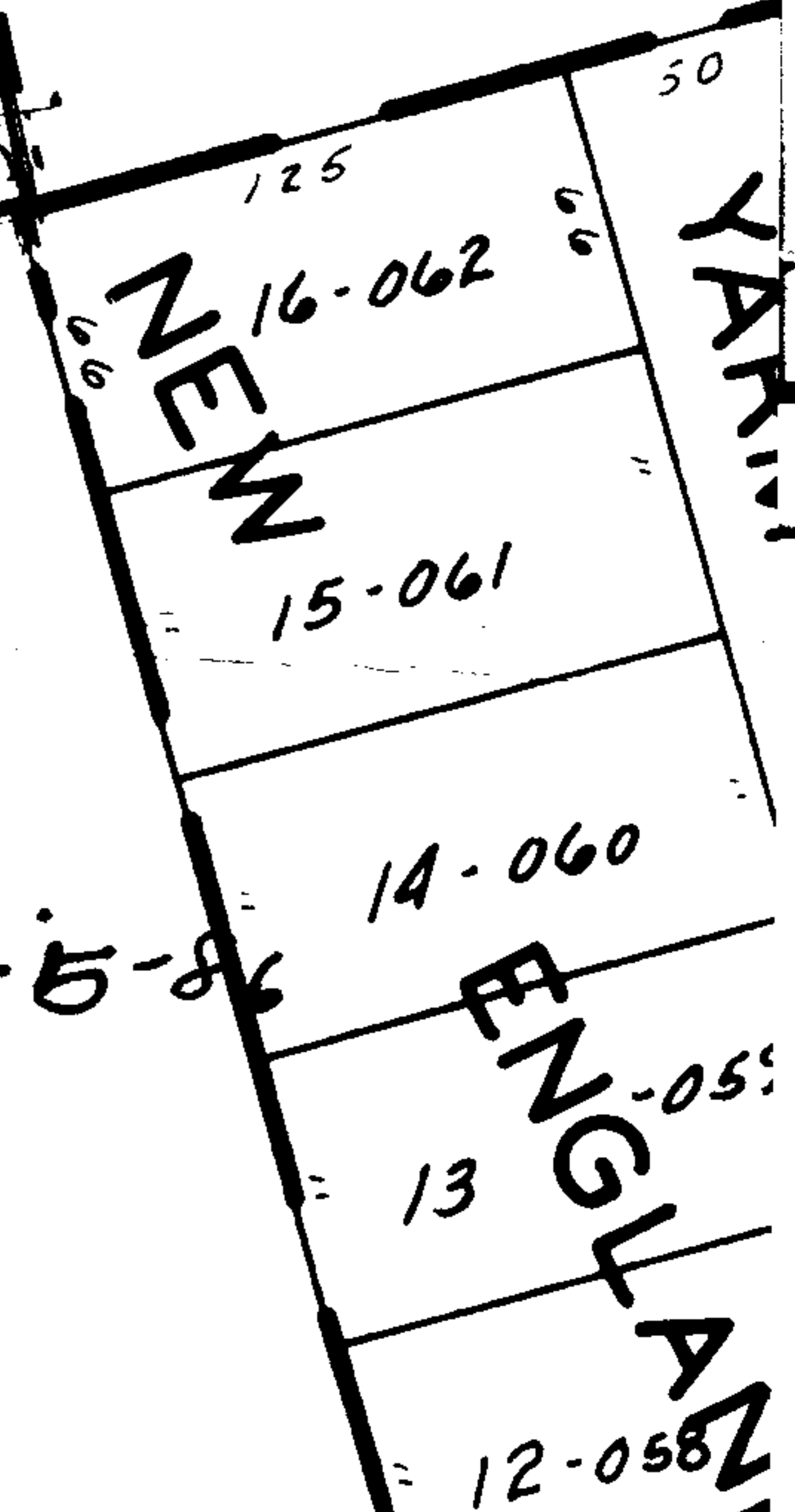
-123  
20.79

39 AC

7418

APPROVED
LORAIN CO.
MAP DEPT.
DATE 9-26-73
PAGE 11-00-099B
BY L. W. Hall
VOID AFTER

S.S. 8-5-86  
11 E



400

-033

395.61