

694.23

-004
6.54 A.

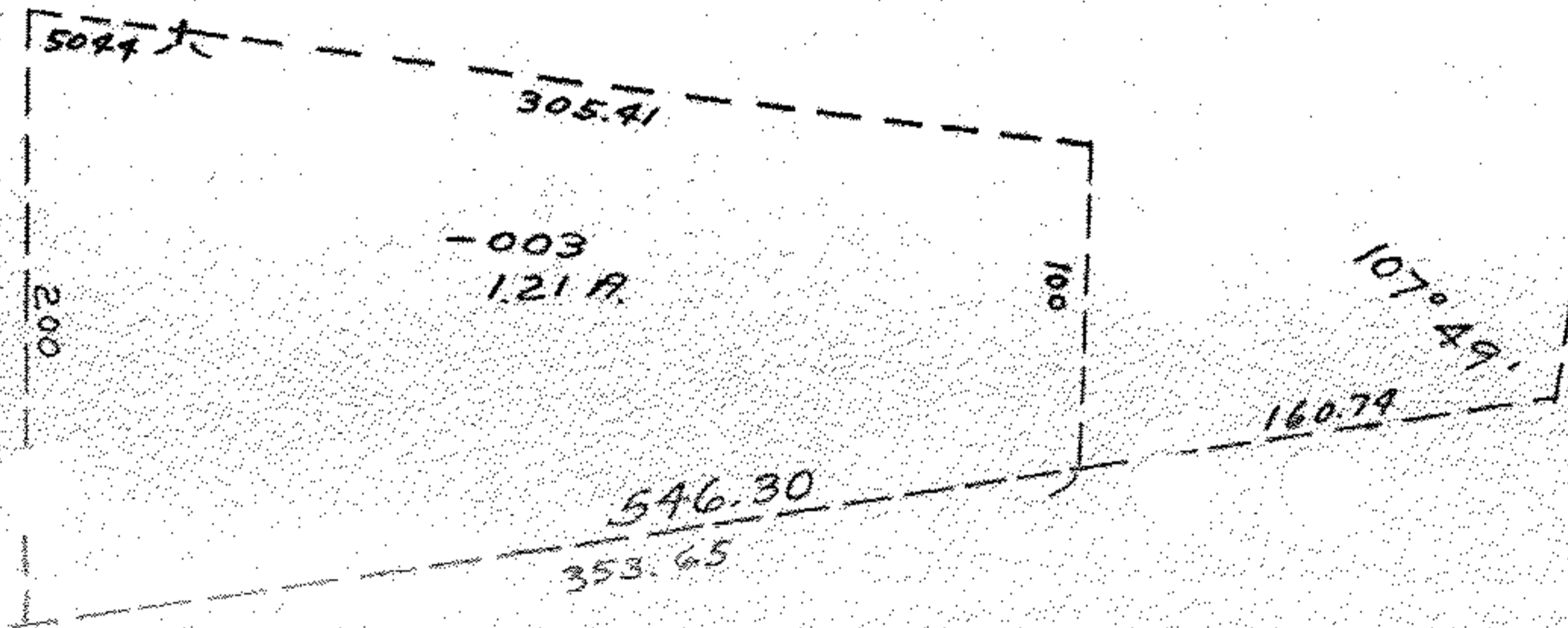
81°08'

619.63

DR.

448.16

[Handwritten signature]



-003
1.21 A.

52

-002

7409

APPROVED
LORAIN CO.
MAP DEPT.
DATE 9-21-73
2-00-052
BY *[Signature]*

-005
32.33 Ac.

-006
16.56 Ac.

R. 935.97

Ch. 603.12

1419.65

584.15

52.67 A.

~~AAA~~ ~~AAA~~

237.67

648.89

284.07

~~48.89~~
~~32.33~~
~~16.56~~

25.25

40.60

R I V E R

OK

7409