

556  
274.4

- 007  
1.44 A.

- 055  
.52 A

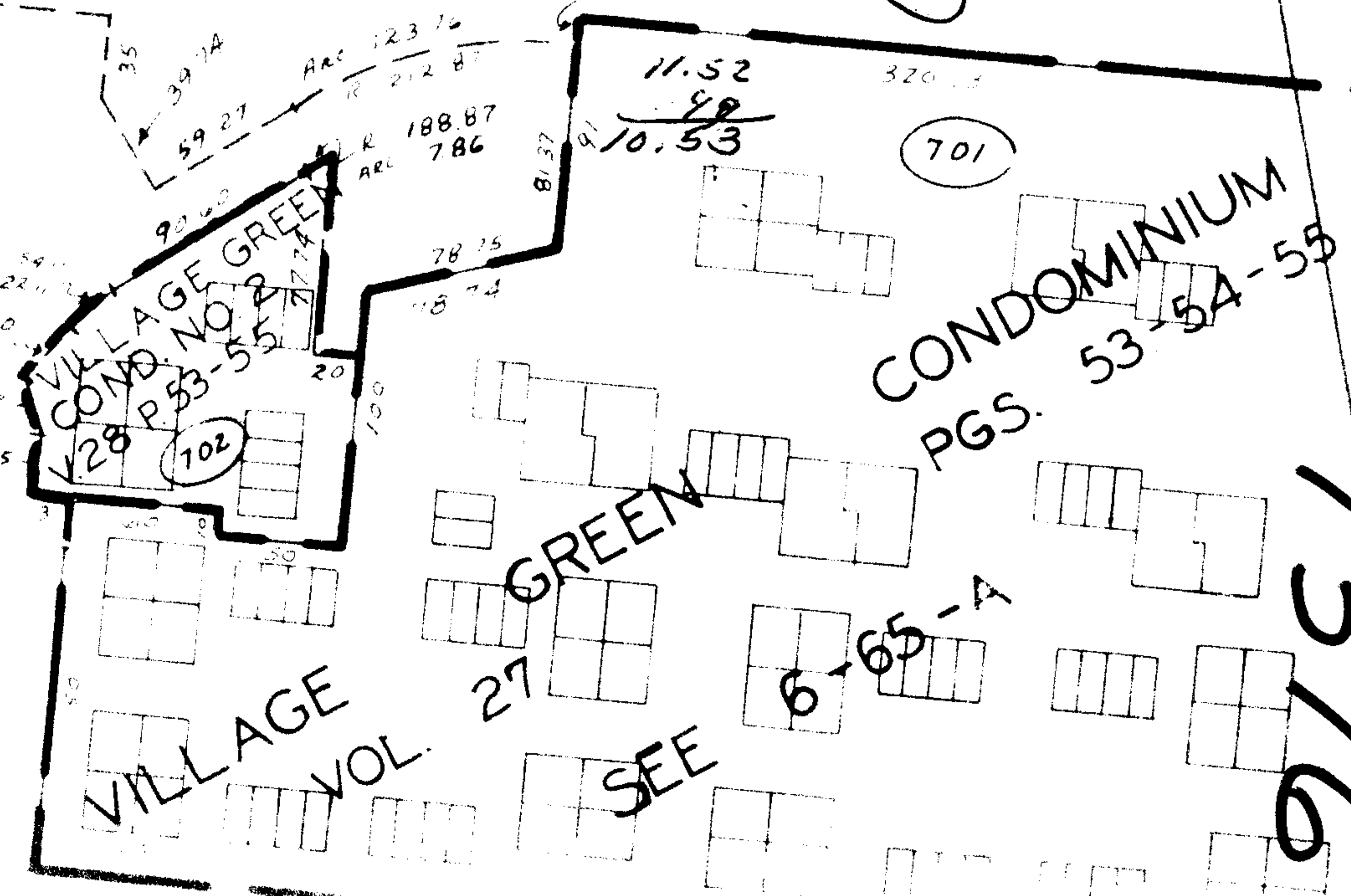
320  
- 061  
9.99 A.

- 062  
~~10.53 A.~~  
10.53 A.

30  
7396

**APPROVED**  
**LORAIN CO.**  
**MAP DEPT.**  
**DATE 9-17-73**  
*6-65*  
**BY** *[Signature]*

- 058  
5.03 A.



RD.  
100  
66

285

7396

584.86