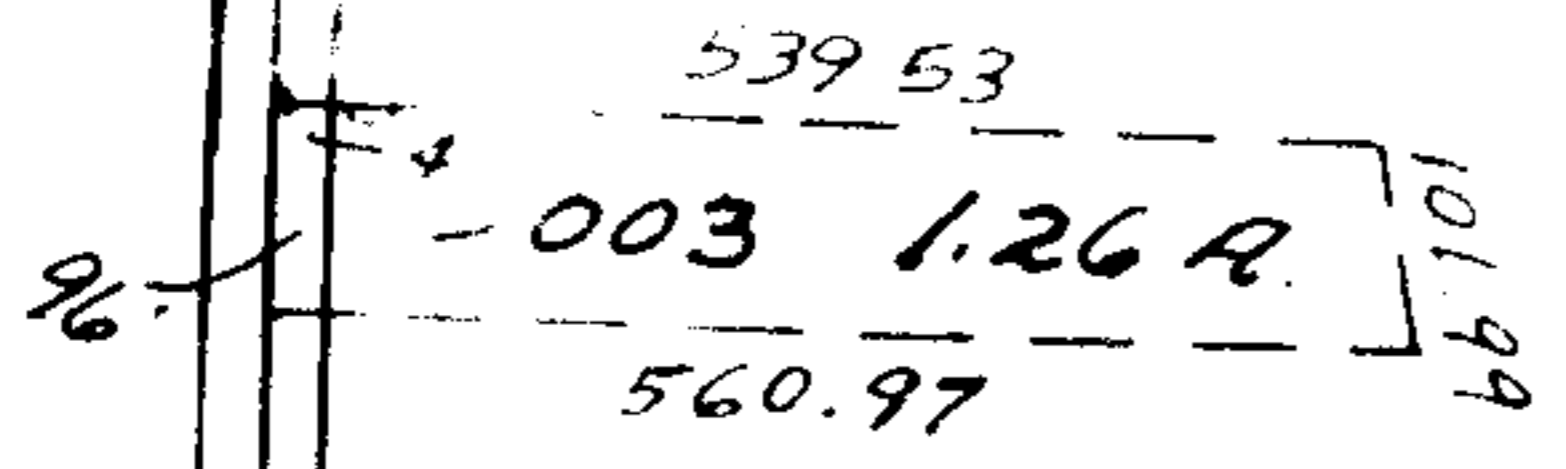
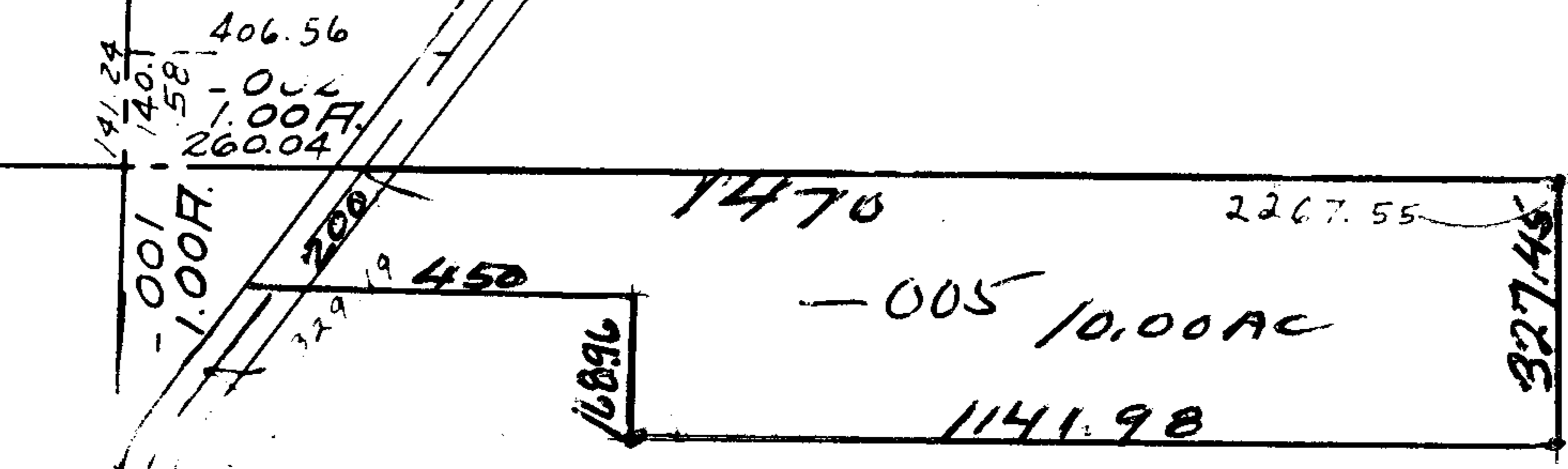


- 004  
43.00 F.

7394



7-29-816 h.k.

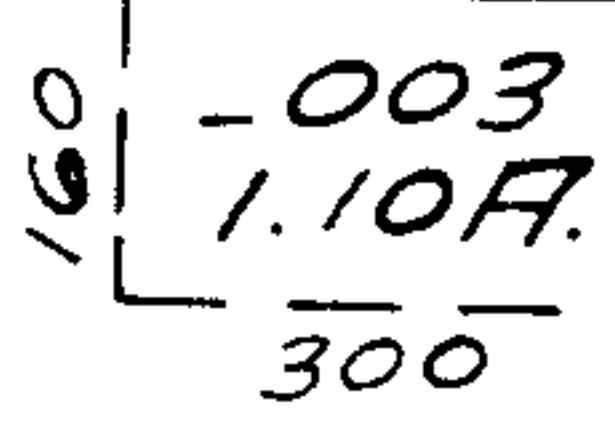
APPROVED	
LORAIN CO.	
MAP DEPT.	
DATE	9-14-73
PAGE	14-C
BY	L.V. Hall
VOID	
AFTER	

37

OK

~~-004~~ 103.58 F.      006 93.58

*Pol*



-001  
13.33 F.

-002  
6.67 F.

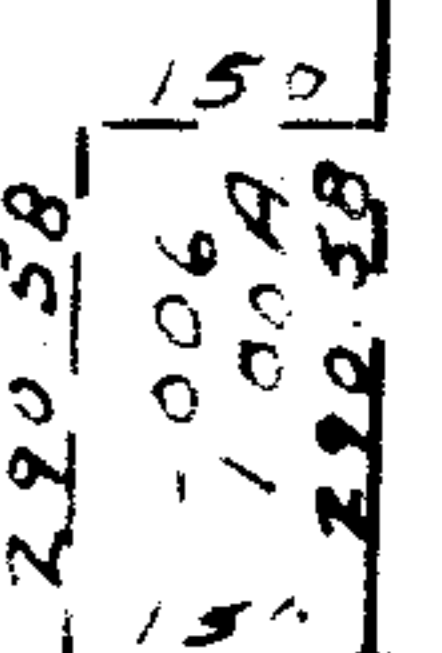
-003  
30.00 F.

44

-007  
26.00 A.

-004  
23.00 F.

7440.80



-001 7.00 F.

-002  
3.00 F.

003  
00 F.

1814.53

1613.04