

7333

004
3.02 A.

005
3.77 A.

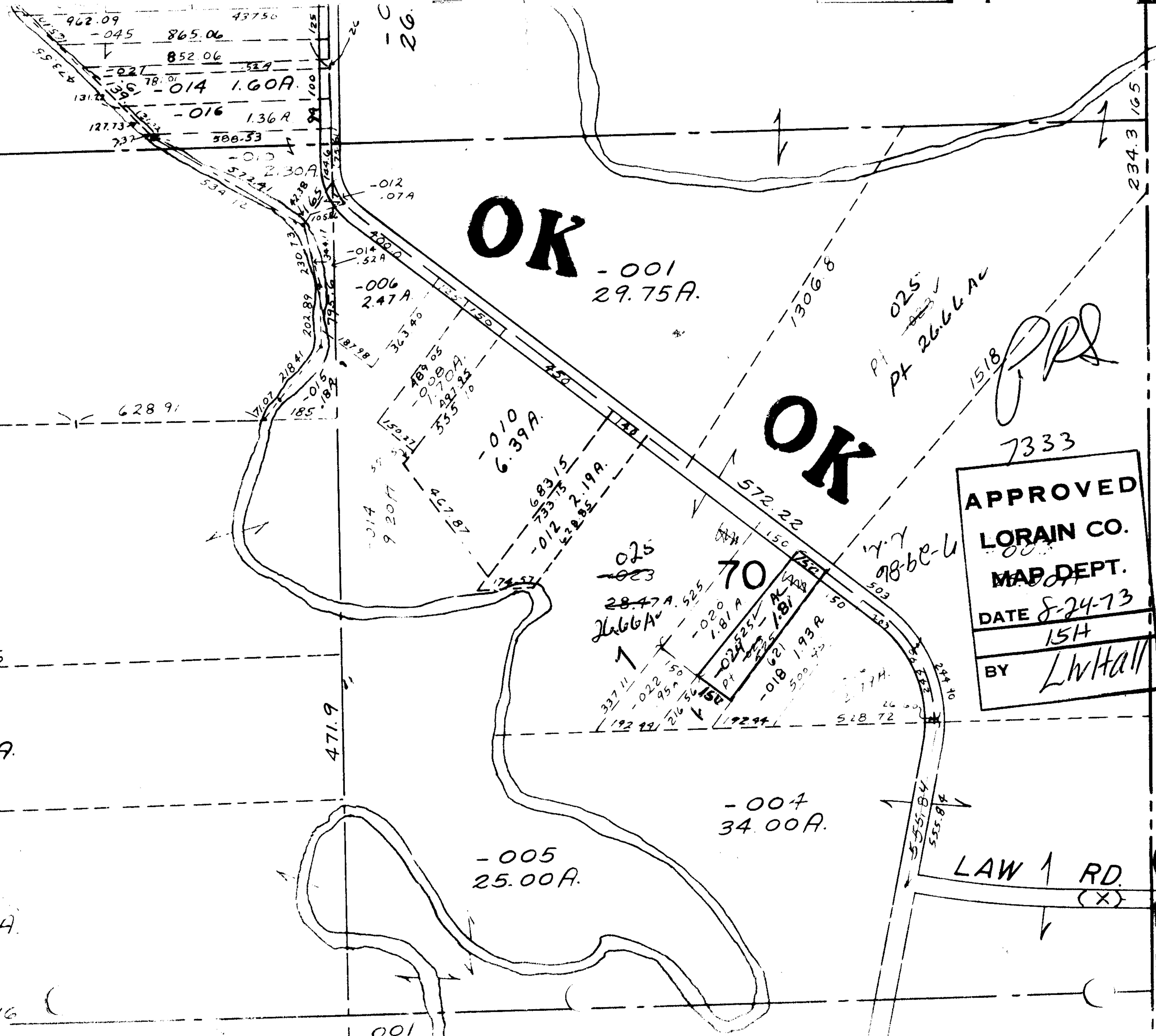
39

2551.56

006
18.27 A.

011
42.41 A.

2657.16



OK

OK

001
29.75 A.

010
6.39 A.

006
2.47 A.

025
28.47 A.

70

005
25.00 A.

007
34.00 A.

7333

APPROVED
LORAIN CO.
MAP DEPT.
 DATE 8-24-73
 154
 BY LWHall

LAW 1 RD.
(X)

7333