

0-019-B

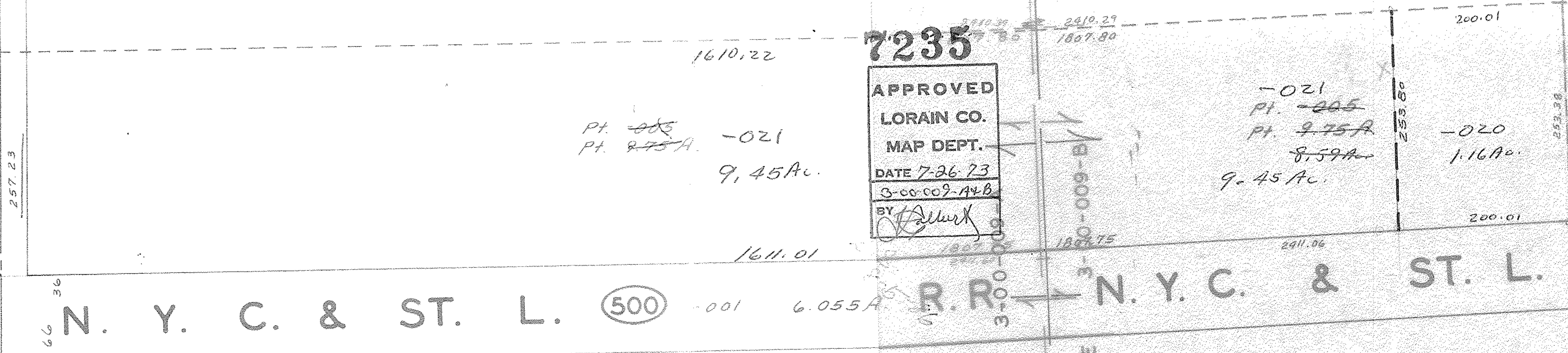
-1237.90 To Oster Rd.

3-00-009-A

3-00-109-B

C-M-01C

7235 OK



257.23

1610.22

7235

2410.29
1807.80

200.01

PT. ~~8.75~~
PT. ~~9.75 A~~ -021
9.45 Ac.

APPROVED
LORAIN CO.
MAP DEPT.
DATE 7-26-73
3-00-009-A+B
BY *[Signature]*

-021
PT. ~~8.05~~
PT. ~~9.75 A~~
~~8.59 A~~
9.45 Ac.

-020
1.16 Ac.

253.80

253.38

1611.01

1807.75

2411.06

200.01

66 36

N. Y. C. & ST. L. (500)

-001 6.055 A

R.R. N. Y. C. & ST. L.

975 W

600.2710
157
153

(500)

7235