

WHITNEY 1375.44

1165.52

7204

(60)

-001
3.00F.

OK

7204

119

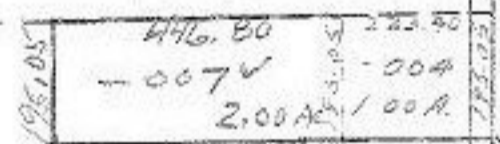
-004
87.00F.



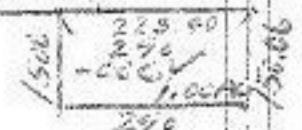
SEE 14-G

-001
52.00F.

122

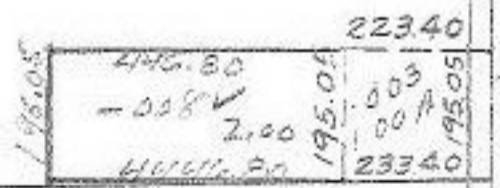


~~48.00A~~ 43.00AC
009V



7204

APPROVED
LORAIN CO.
MAP DEPT.
DATE 7-17-73
14H
BY L.W. Hall



PRJ

130