

SEE 9-00-095-B

7169

HAMILTON

ST.

RD.

CHANGE NUMBER'S ON 105-A

00-105-A

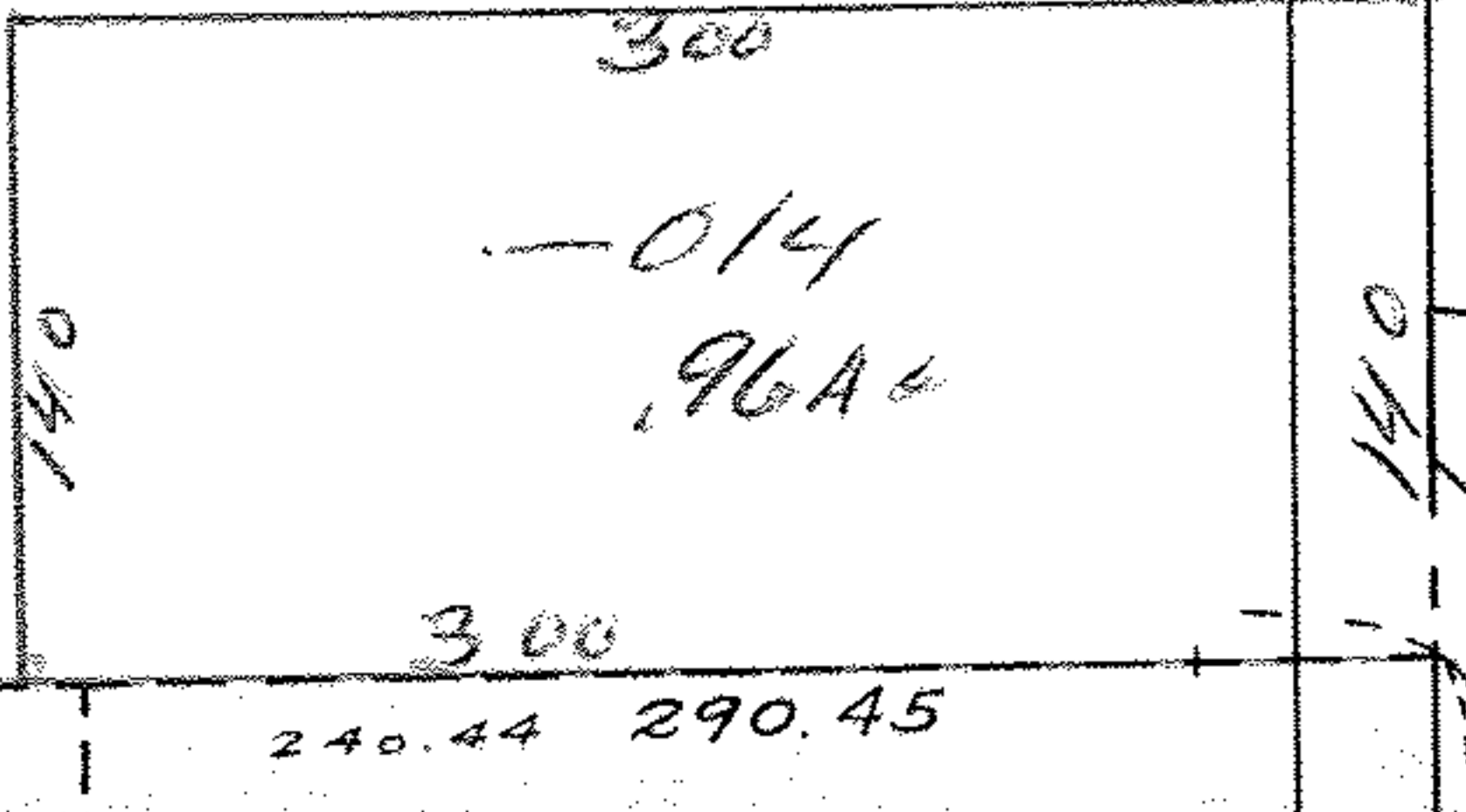
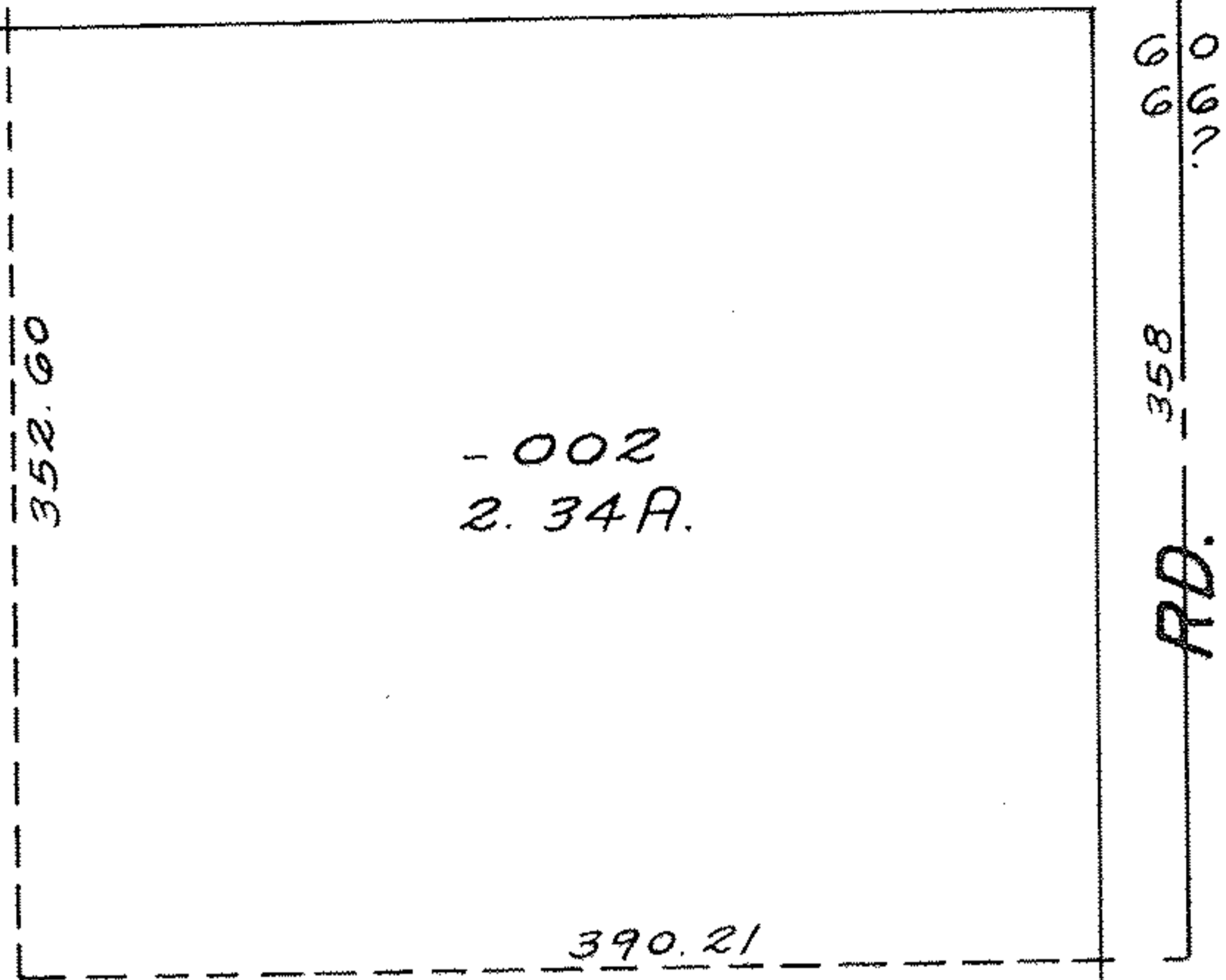
SEE 9-00-106-A

OK

PT. 015  
PT. 001  
PT. 62.61A

61.70Ac

7169 OK  
 APPROVED  
 LORAIN CO.  
 MAP DEPT.  
 DATE 7-5-73  
 9-00-105-A+B  
 BY L. W. HALL



3811.38

715.73

585.10

140

60

358

60

00-105-B

58