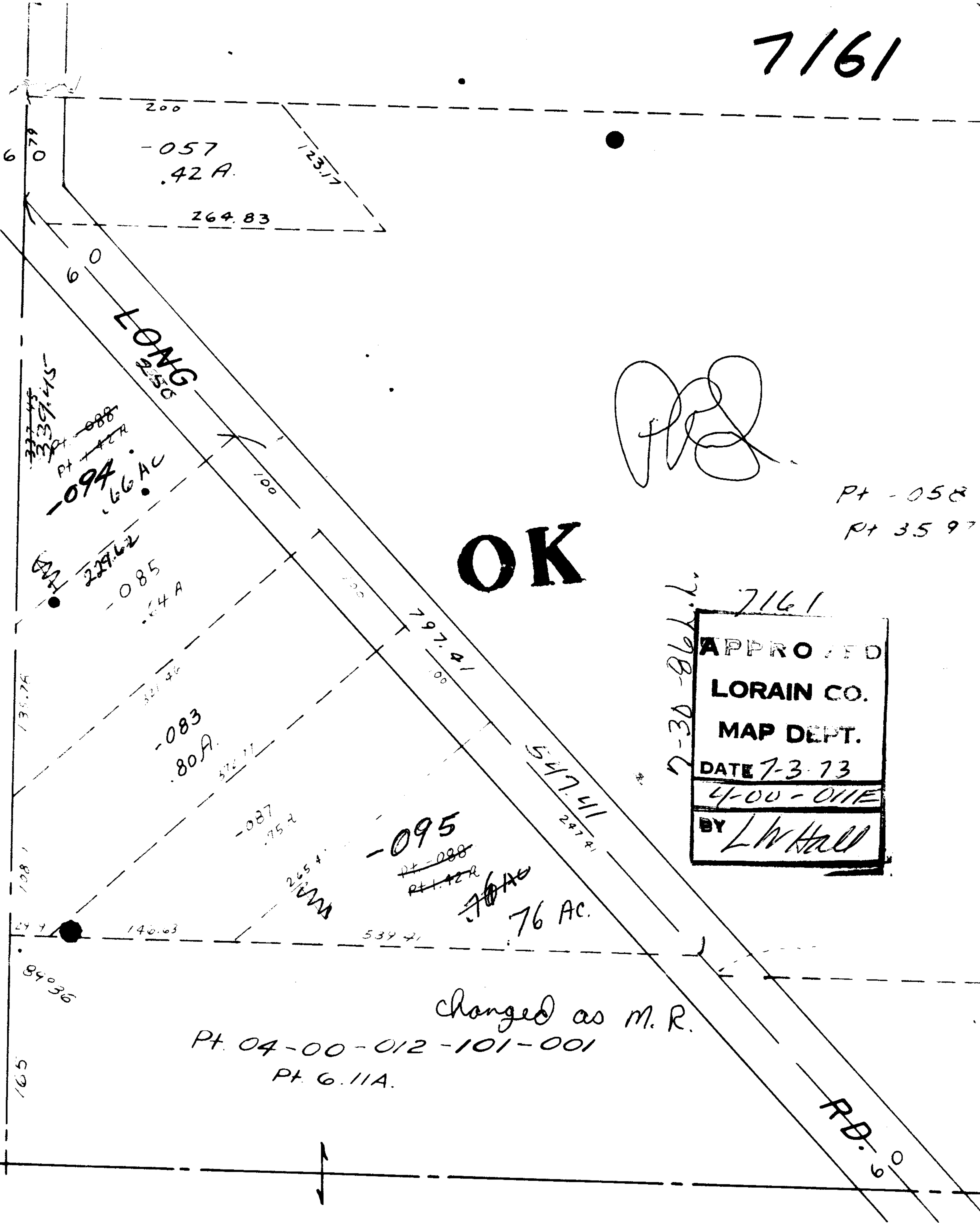


7161



*[Handwritten signature]*

Pt - 058  
Pt 3597

**OK**

7161

APPROVED
LORAIN CO.
MAP DEPT.
DATE 7-3-73
4-00-011E
BY L.W. Hall

7-30-86 L.L.

changed as M.R.

Pt. 04-00-012-101-001  
Pt. 6.11A.

RD. 60

SEE 4-00-