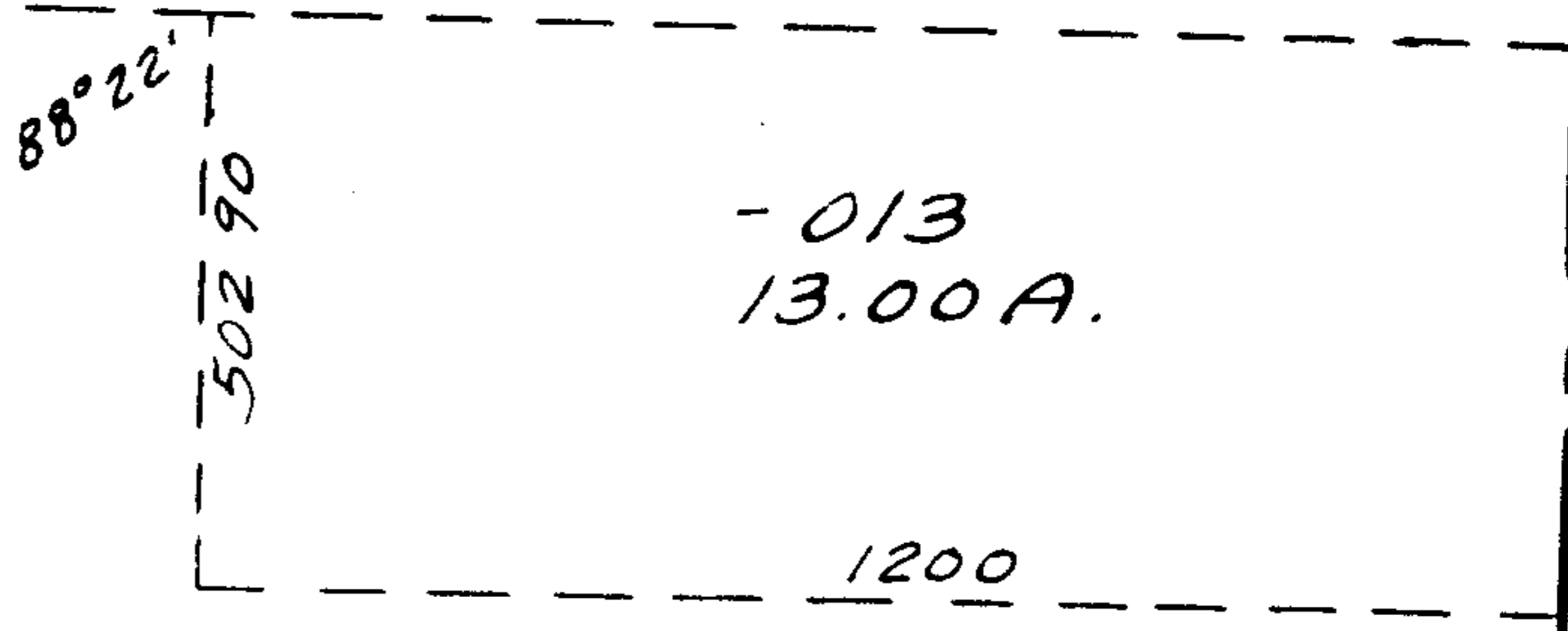
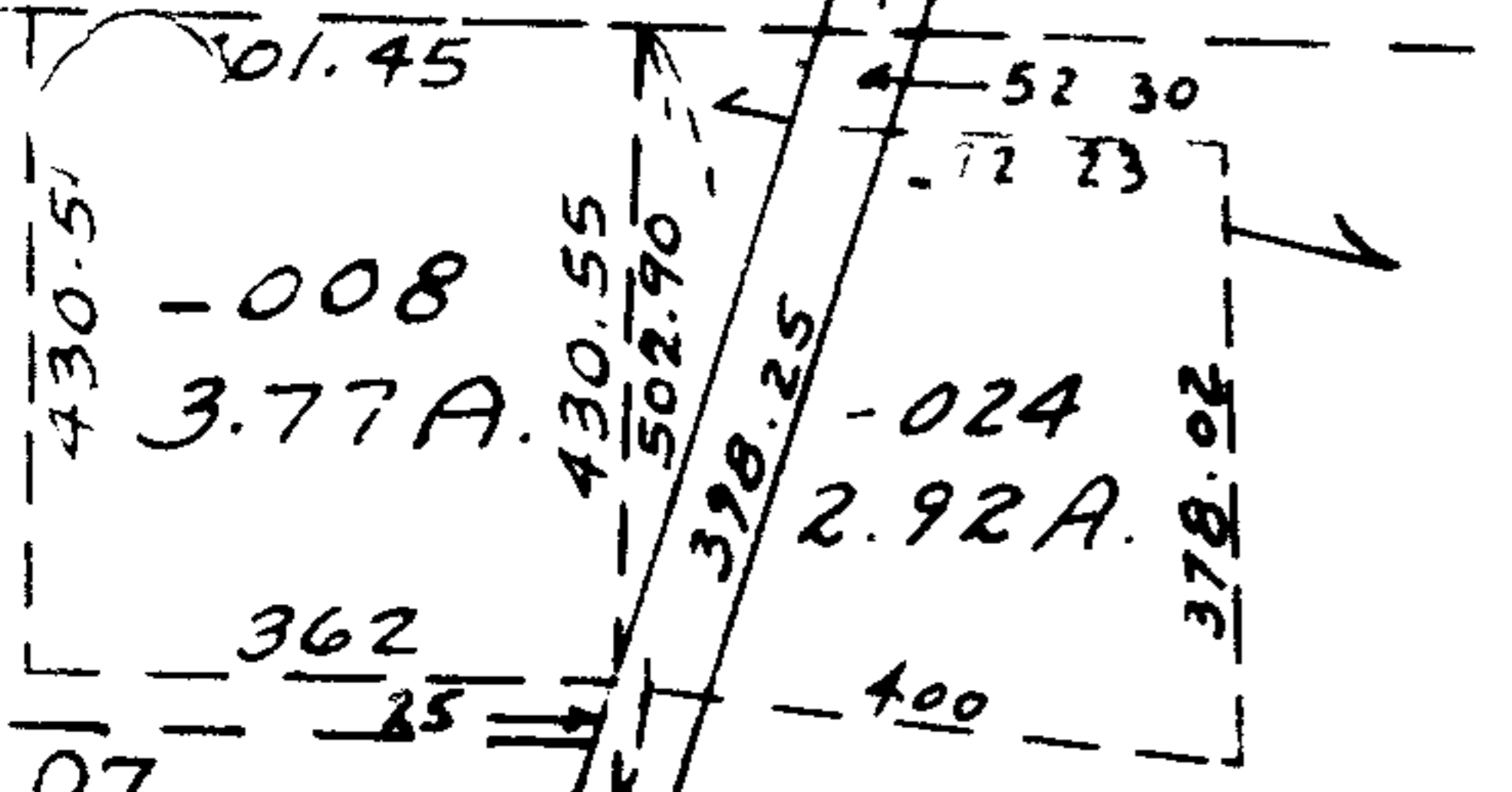
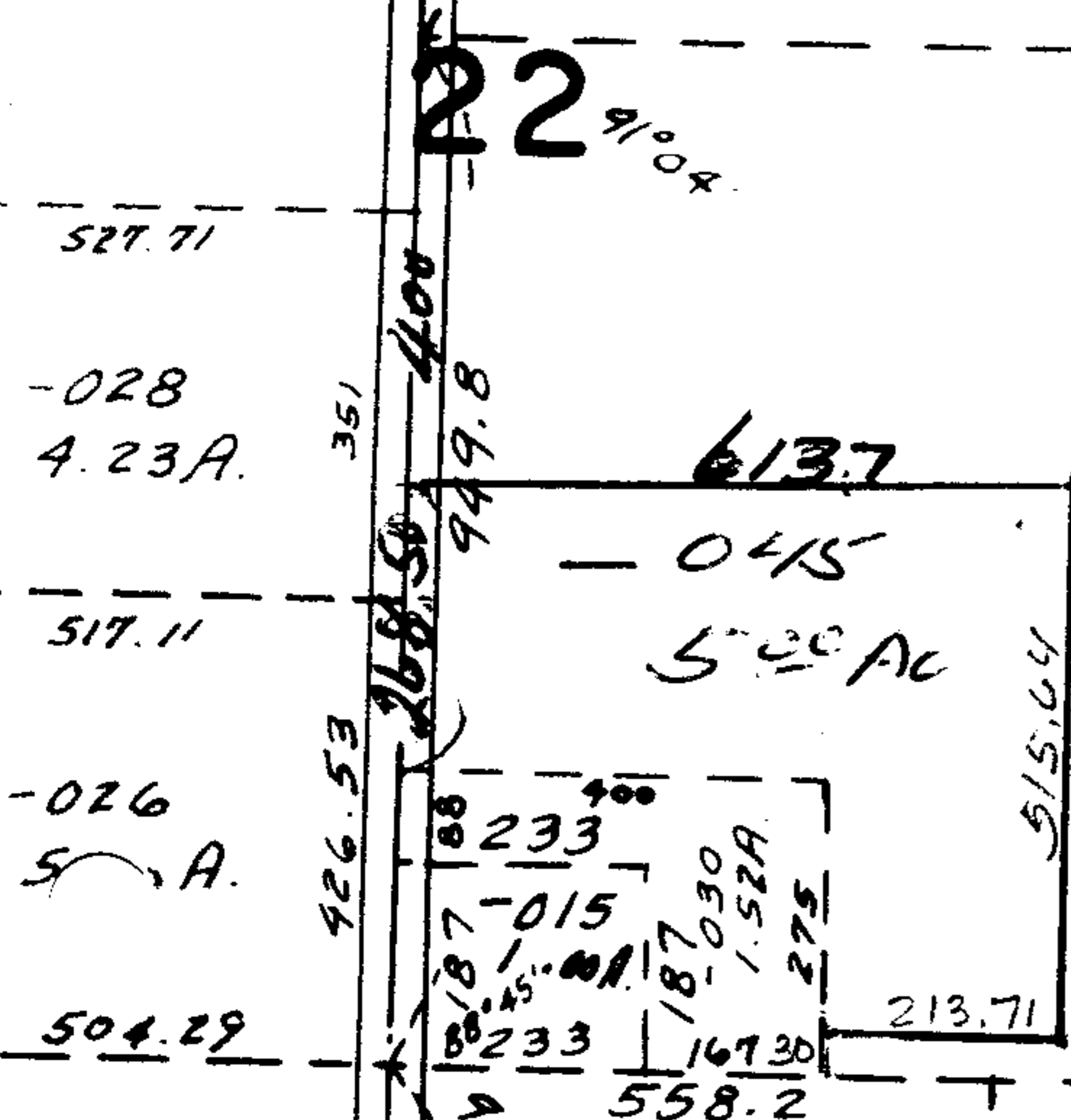


50 86 A.

7146



-025
40.08 A.



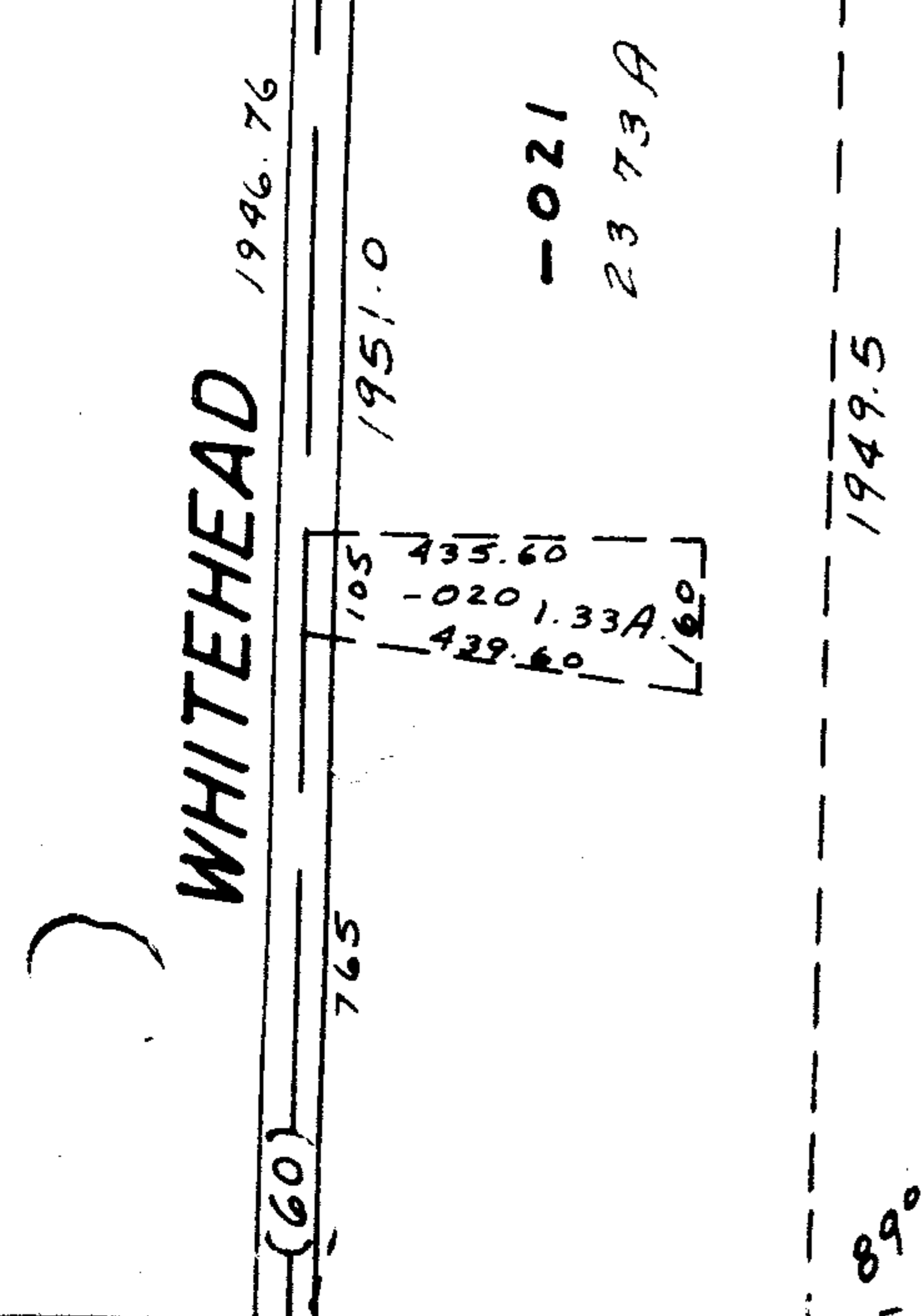
PPS

2673.0

-044
~~031~~
~~53.48 A~~
48.48 AC

OK

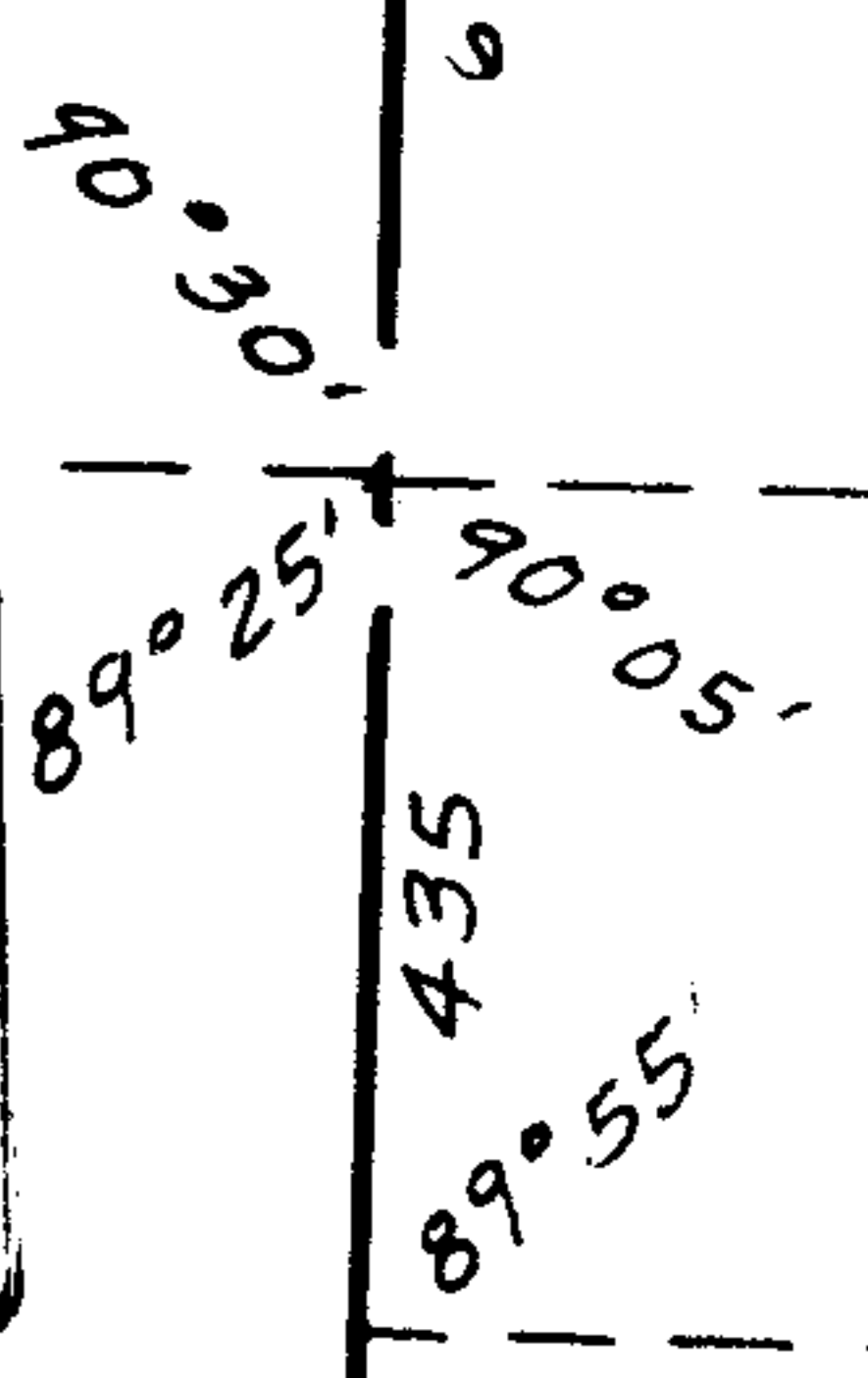
APPROVED
 LORAIN CO.
 MAP DEPT.
 DATE 6-29-73
 10F
 BY L.V. Hall



2685.0
2687.0

-017
88.00 A Dup.
93.00 A. (Deed)

WHITEHEAD



2124