

7123

OK

NORTH RIDGE

FOSTER PARK

SEE 5-00-061-B

RIVER TWP.

88
39.27
716.15

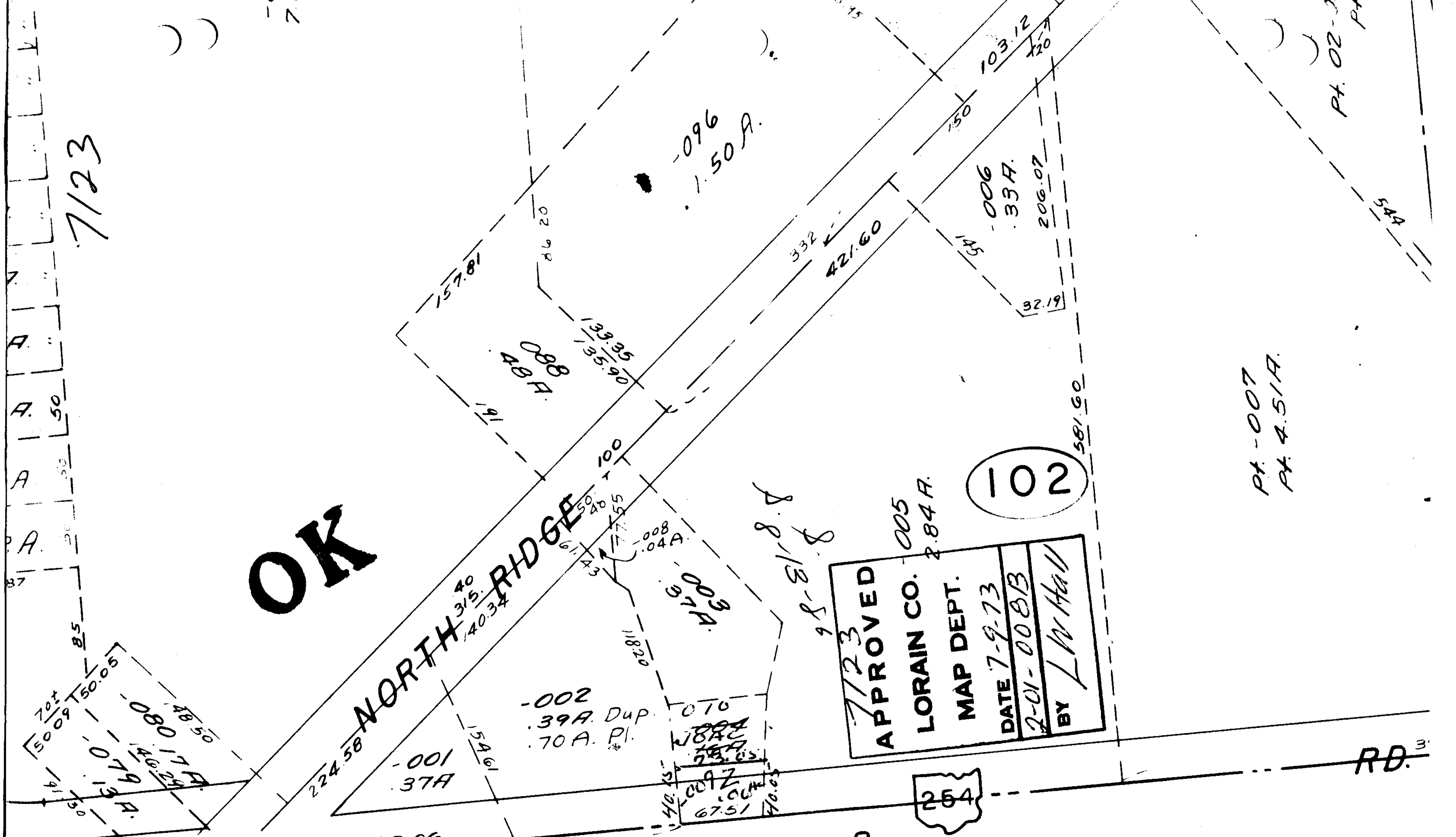
APPROVED
LORAIN CO. 005
MAP DEPT.
DATE 7-9-73
2-01-008B
BY L W Hall

102

254

TRACT 1
S. PT. LOT

7123



PT. -007
PT. 4.51A.

PT. 02-3

544

103.12

006
33A.

206.07

32.19

581.60

332

421.60

157.81

26.20

133.36
135.90

088
088A

096
1.50 A.

100

55.48

77.55

61.43

118.20

008
04A

009
09A

002
39A. Dup.
70A. Pl.

010

088A

088A

009Z

009Z

67.51

40.03

40.03

40.03

40.03

40.03

40.03

98-81-8

[Handwritten signature]