

**OK**

**T**

**C**

7080  
**APPROVED**  
**LORAIN CO.**  
**MAP DEPT.**  
 DATE 6-18-73  
 206  
 BY LWHall

**BURSLEY**

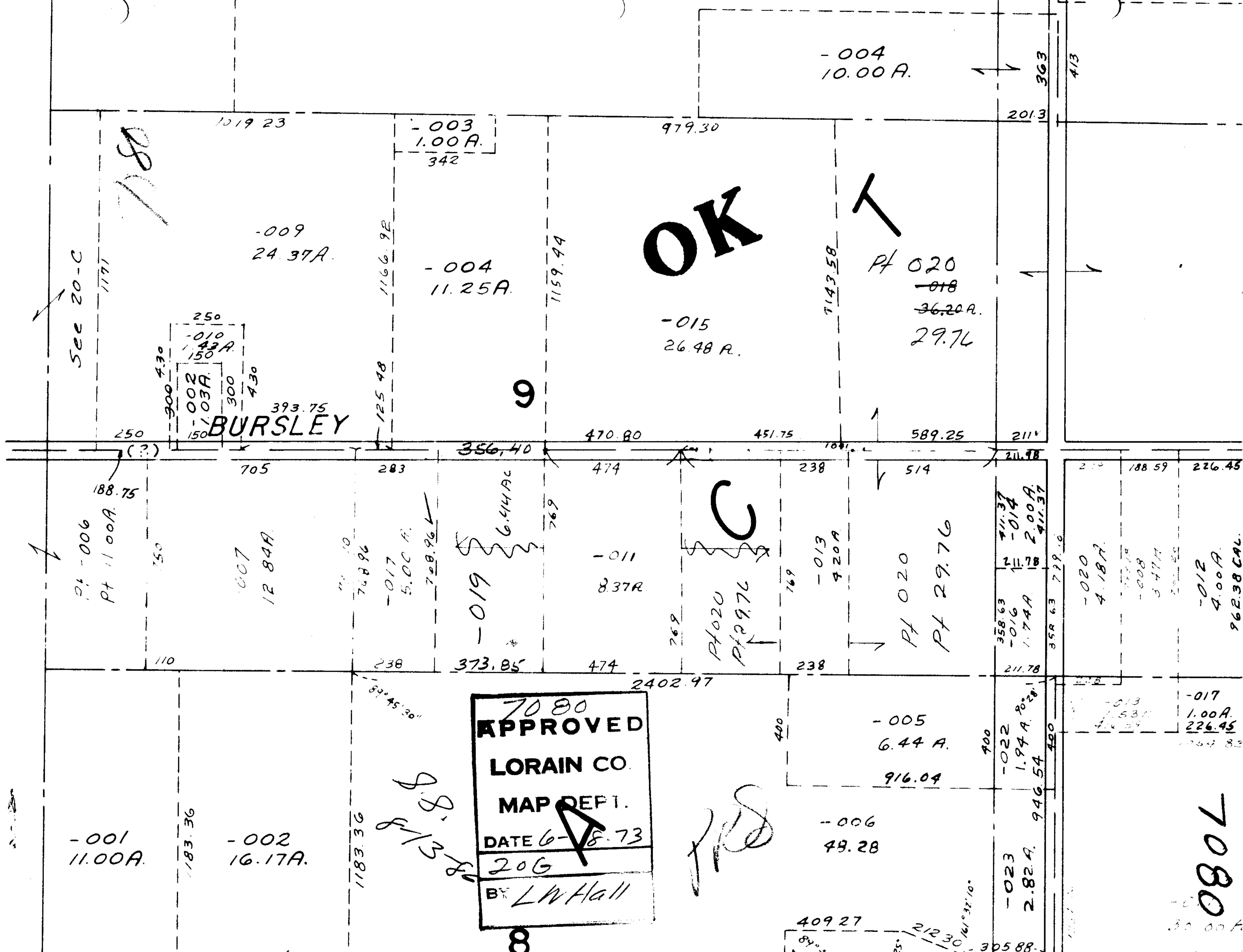
See 20-C

780

7080

9

8



-001  
11.00A.

-002  
16.17A.

-003  
1.00A.  
342

-004  
11.25A.

-015  
26.48A.

-004  
10.00A.

-009  
24.37A.

Pt 020  
-018  
36.20A.  
29.76

Pt -006  
Pt 11.00A.

-007  
12.84A.

-017  
5.00A.

-019

-011  
8.37A.

-013  
9.20A.

Pt 020  
Pt 29.76

-020  
4.18A.

-012  
4.00A.  
962.38 CAL.

-005  
6.44A.  
916.04

-006  
49.28

-023  
2.82A.  
946.54

-017  
1.00A.  
226.45

1019 23

979.30

201.3

250

250  
-010  
4.3A.  
150  
-002  
1.03A.  
300  
4.30  
300  
4.30

393.75

1166.9E

125.48

1159.94

470.80

451.75

589.25

211.4

705

283

356.40

474

238

514

211.98

219

188.59

226.45

188.75

150

110

768.96

728.96

6.44A

769

769

769

358.63  
-016  
1.74A.  
358.63  
739.16

89°45'30"

2402.97

400

900

1183.36

1183.36

8.8  
5.8  
8.8

409.27

212.30

305.88

1202.75

30.00A