

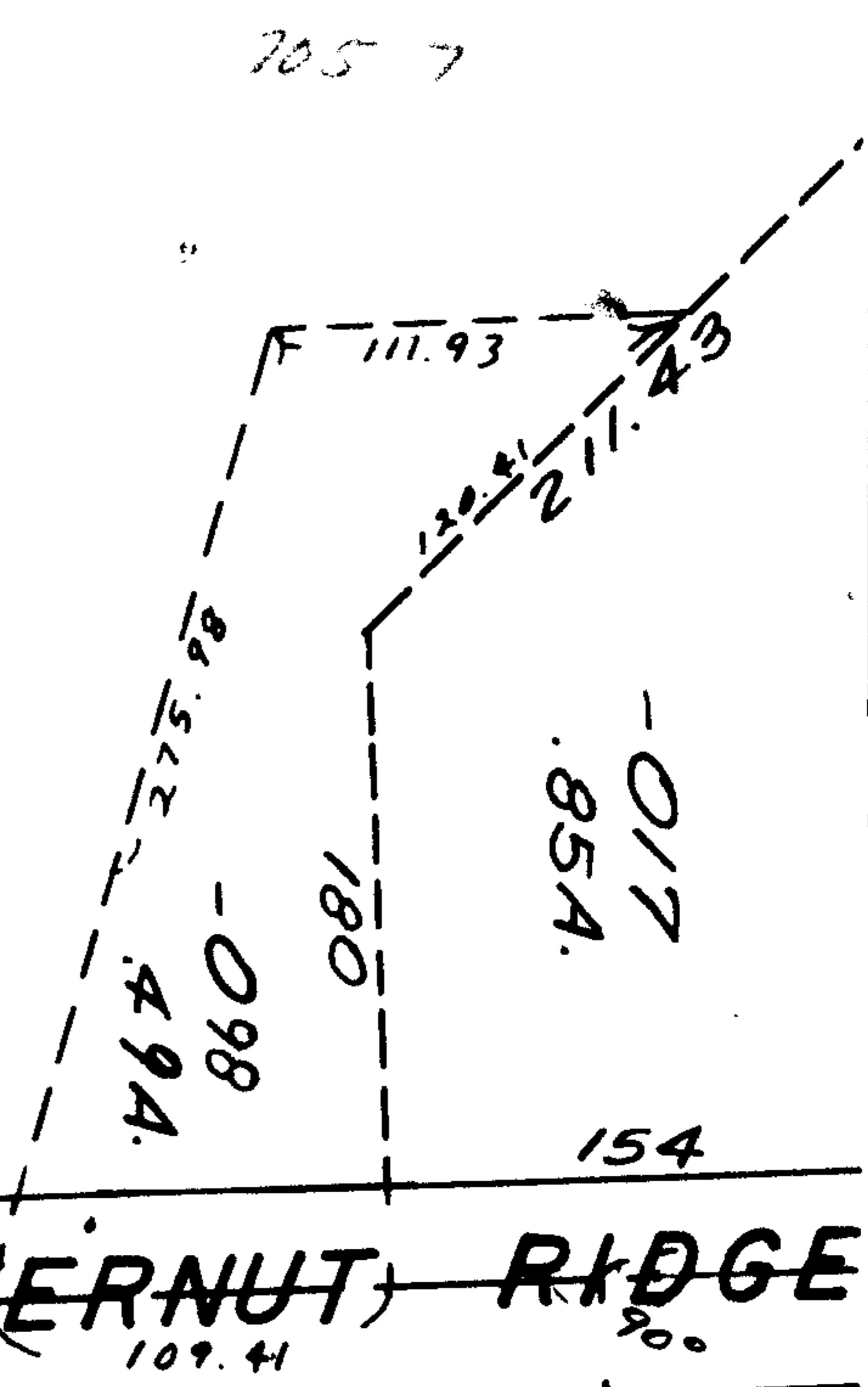
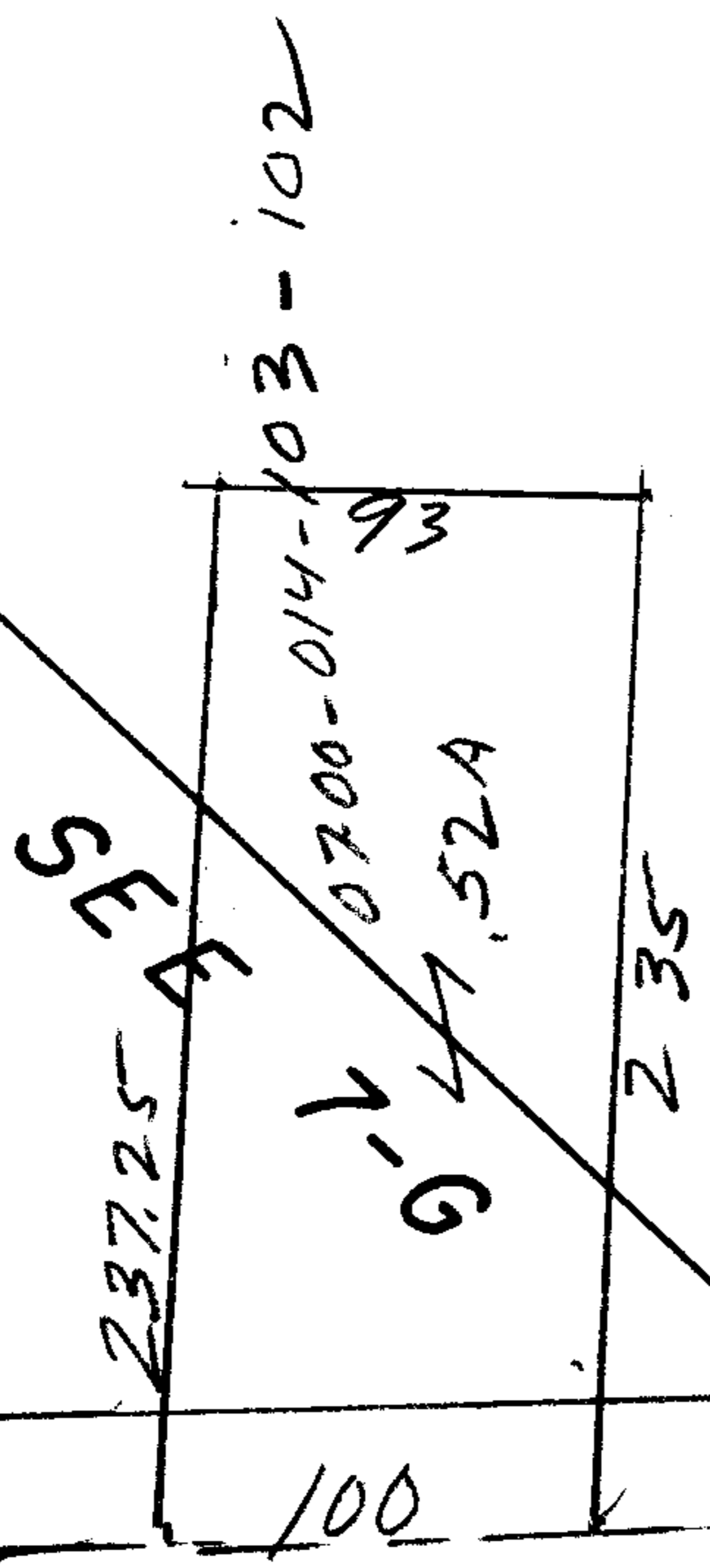
7057
2/2

07-00-014-103-103
44.61 AC
45.13 AC
52 AC
44.61

Pt. 099
Pt. 45.13A

OK *PR*

7-30-86 h.h.
7057
APPROVED
LORAIN CO.
MAP DEPT.
DATE 6-7-73
7-00-014E
LW Hall



BUTTERNUT RIDGE
109.41
80°

Pg 7-00-014-C