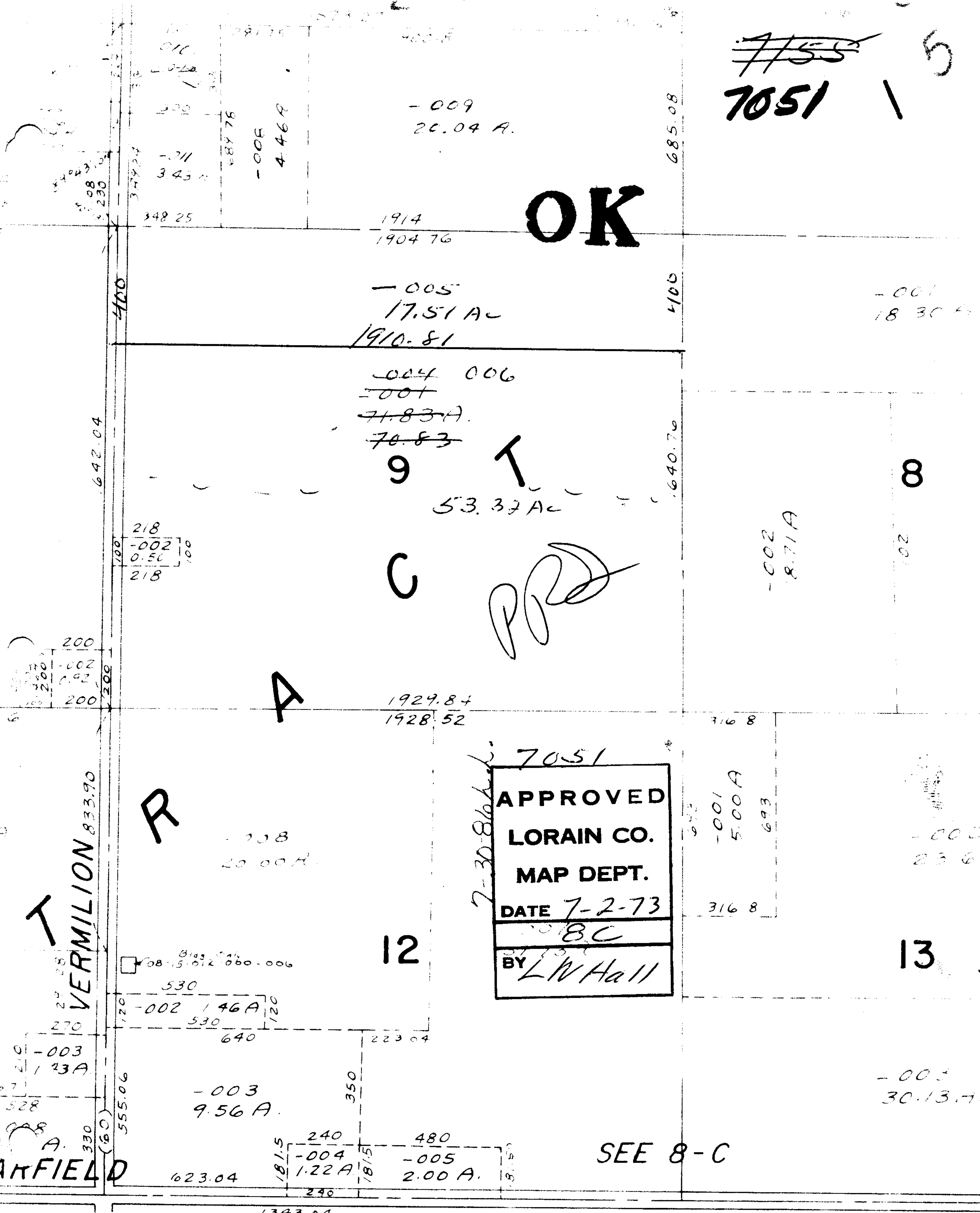


~~755~~
7051 1 5



OK

9

53.37 AC

C

PPD

A

1929.84
1928.52

R

20.00 AC

12

08-15-012 060-006

-002 1.46 A

-003
9.56 A.

240 480
-004 1.22 A
-005 2.00 A.

7-30-86
7051
APPROVED
LORAIN CO.
MAP DEPT.
DATE 7-2-73
BY *BC*
BY *L.V. Hall*

SEE 8-C

ANKFIELD

VERMILION 833.90