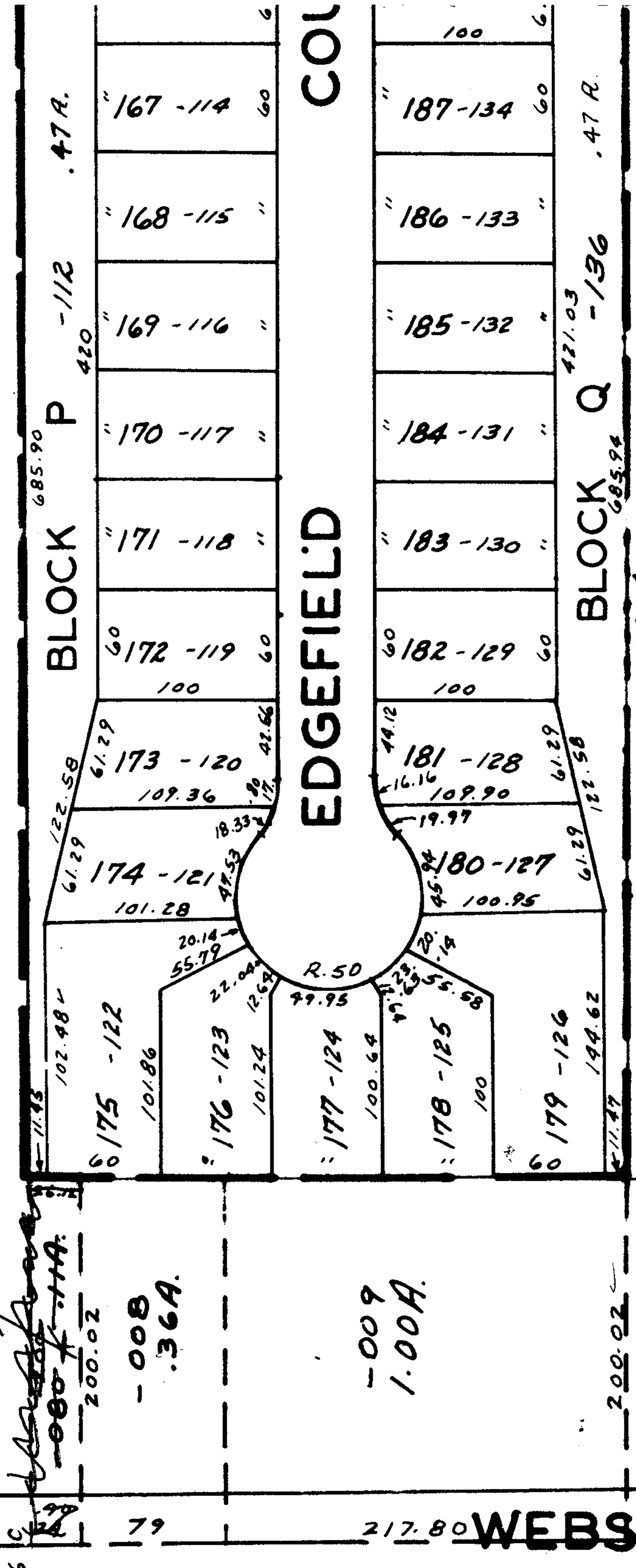


D-30-86

7034

**APPROVED**  
**LORAIN CO.**  
**MAP DEPT.**  
 DATE 5-24-73  
 15-00-099-B  
 BY *[Signature]*



*[Signature]*  
 200.02  
 -008  
 .36A.

-009  
 1.00A.

C.V. Moore  
 -010  
 1.00A.

79 217.80 **WEBSTER** 217.80

*C.M. - OK*

*RS* (10)

-011  
 3.43A.

7034  
 42