

PRS.

ERIE COUNTY

27

113

GORE

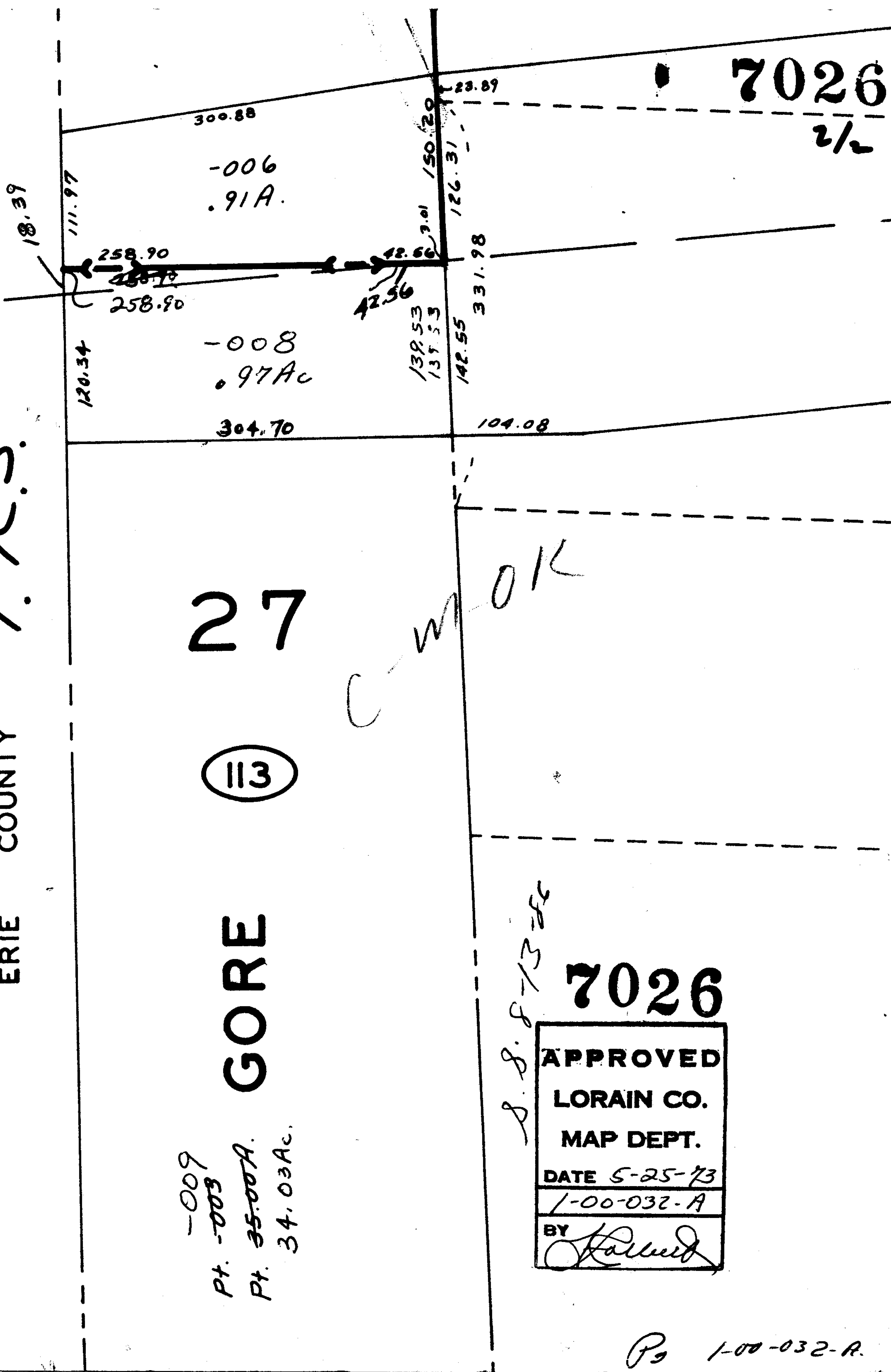
-009
Pt. -003
Pt. 35-00A.
34.03Ac.

7026

APPROVED
LORAIN CO.
MAP DEPT.
DATE 5-25-73
1-00-032-A
BY <i>Kalund</i>

D. S. 8-13-88

Pg 1-00-032-A.



7026
2/2