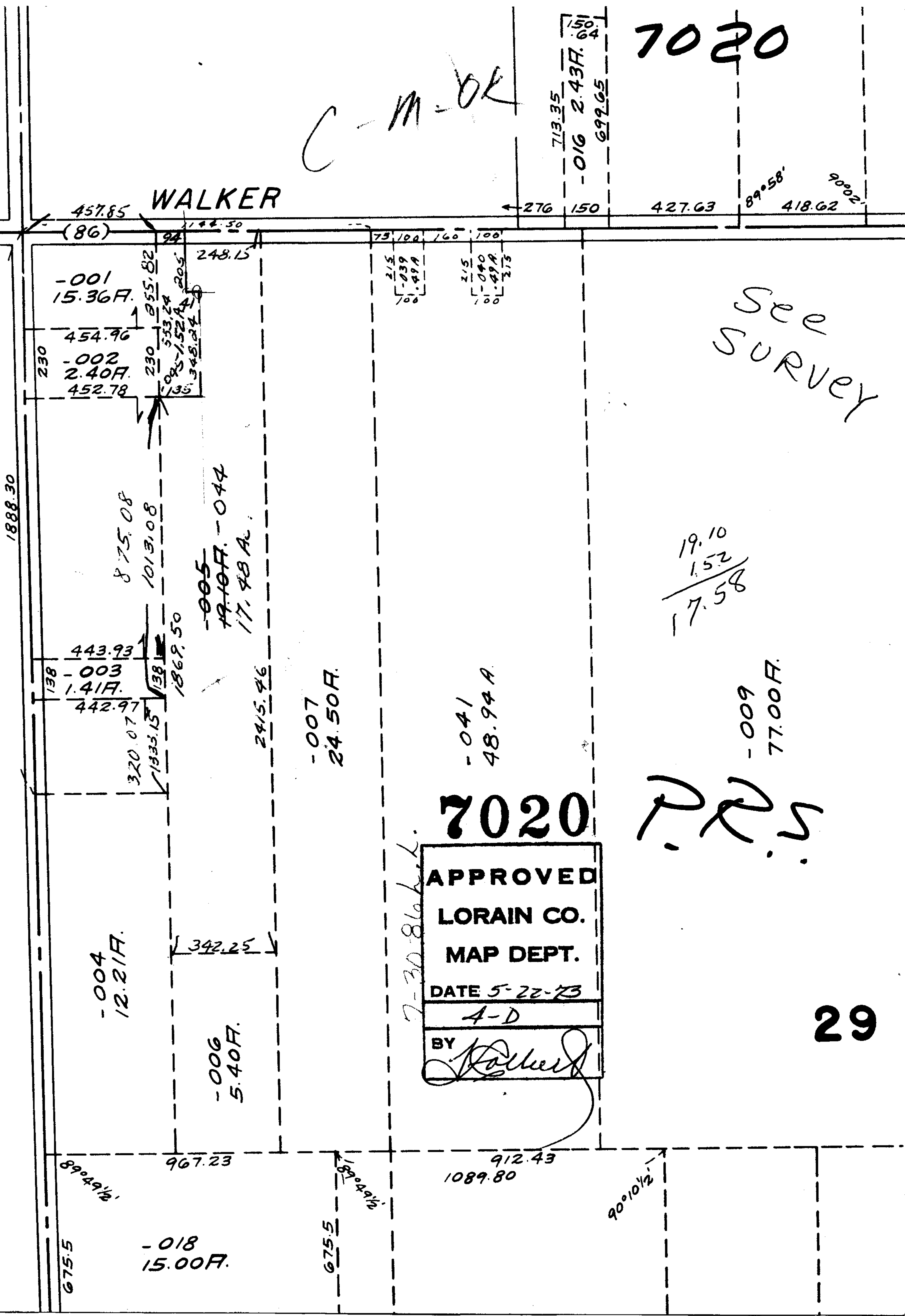


509.71
503.37
1013.08

S.

C-M-OK

7020



457.85 WALKER

← 276 150 427.63 89°58' 418.62 90°02'

-001
15.36 F.

230 454.96
-002
2.40 F.
452.78

138 443.93
-003
1.41 F.
442.97

-004
12.21 F.

-006
5.40 F.

875.08
1013.08

-005
19.10 F. - 0.44
17.48 Ac.

-007
24.50 F.

-041
48.94 A.

7020

APPROVED
LORAIN CO.
MAP DEPT.
DATE 5-22-73
A-D
BY *Koller*

See Survey

19.10
1.52
17.58

-009
77.00 F.

P.P.S.

29

675.5 -018
15.00 F.

675.5

912.43
1089.80

90°10 1/2'

1888.30

89°49 1/2'

89°49 1/2'

(86) 94 142.50 248.15

75 100 160 100

2 1/2
-039
0.49 A

2 1/2
-040
0.49 A

713.35
-016 2.43 F.
699.65

150.64