

-002  
30.00 A.

993.28  
-011  
993.95  
7.56 A.

-012  
10.45 A.

1010.46

-006  
12.90 A.

54

003  
~~-003~~  
93.59 A.

93.59 Ac  
- 1.85 Ac  
91.74 Ac

6970  
APPROVED  
LORAIN CO.  
MAP DEPT.  
DATE 5-9-73  
IK  
BY L.W. Hall

100  
80  
180  
21450  
39450

P.R.S.

all Combined into  
2.57 Ac

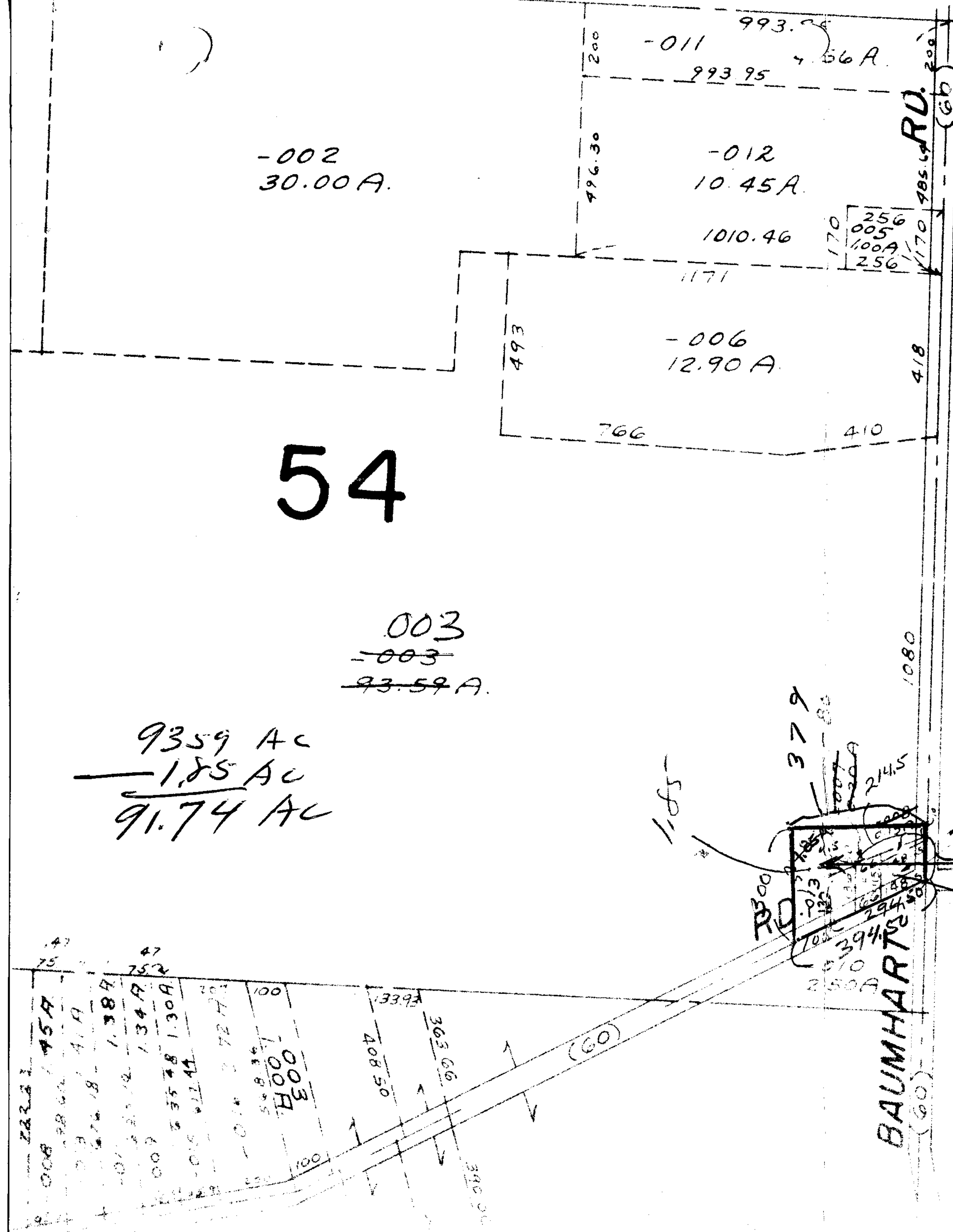
-019  
2.57 A. PRS.  
1.85

.72  
Remainder  
SEE SURVEY

C - MOK

6970

IK



BAUMHARTS

RD.

(60)

(60)

