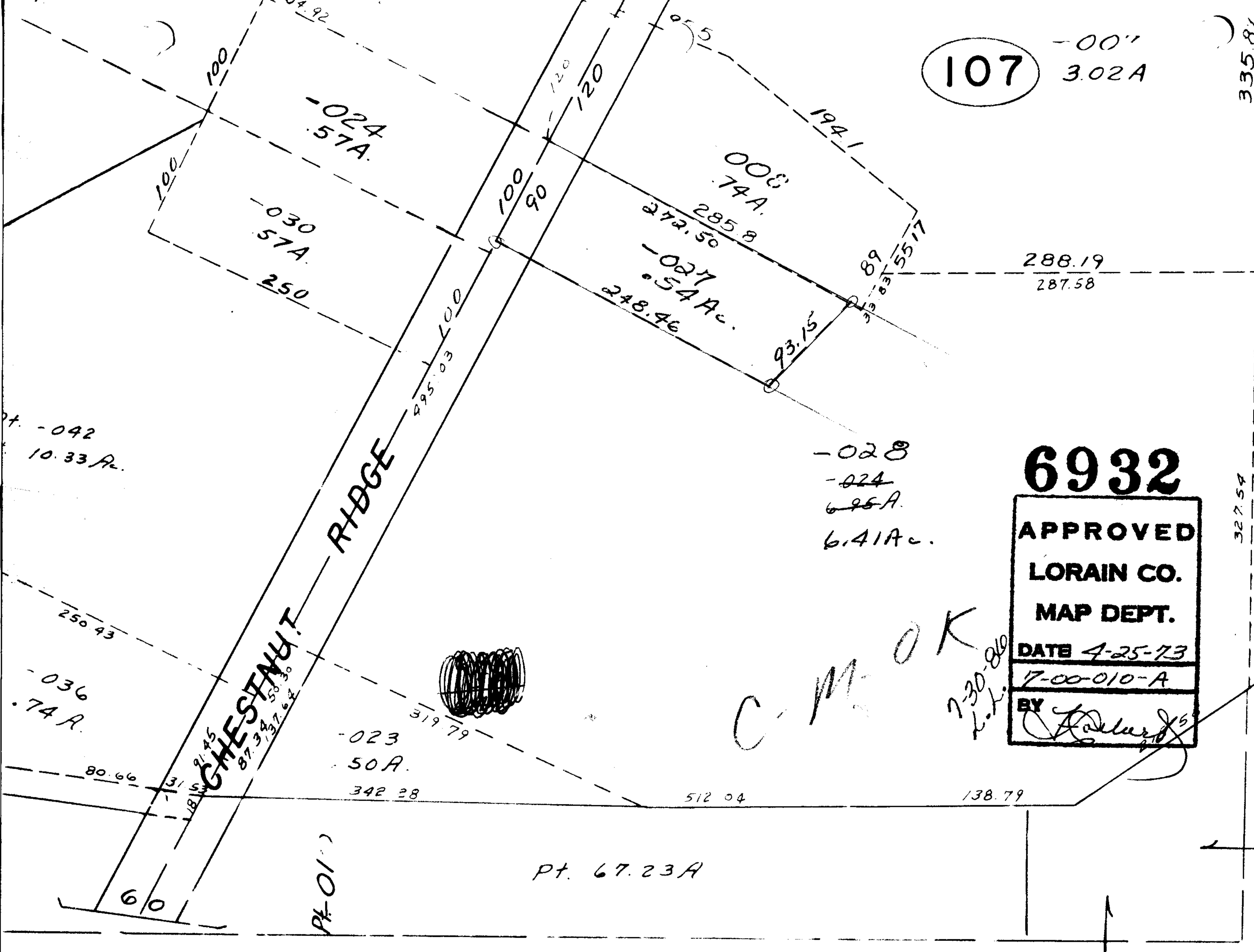


107

-00"
3.02A

335.81



-028
-024
695A.
6.41Ac.

6932

APPROVED
LORAIN CO.
MAP DEPT.

DATE 4-25-73
17-00-010-A
BY *[Signature]*

C-M-O-K
7-30-80
K.L.

SEE 7-00-010-C

P.R.S.

6932

6932