

222.75

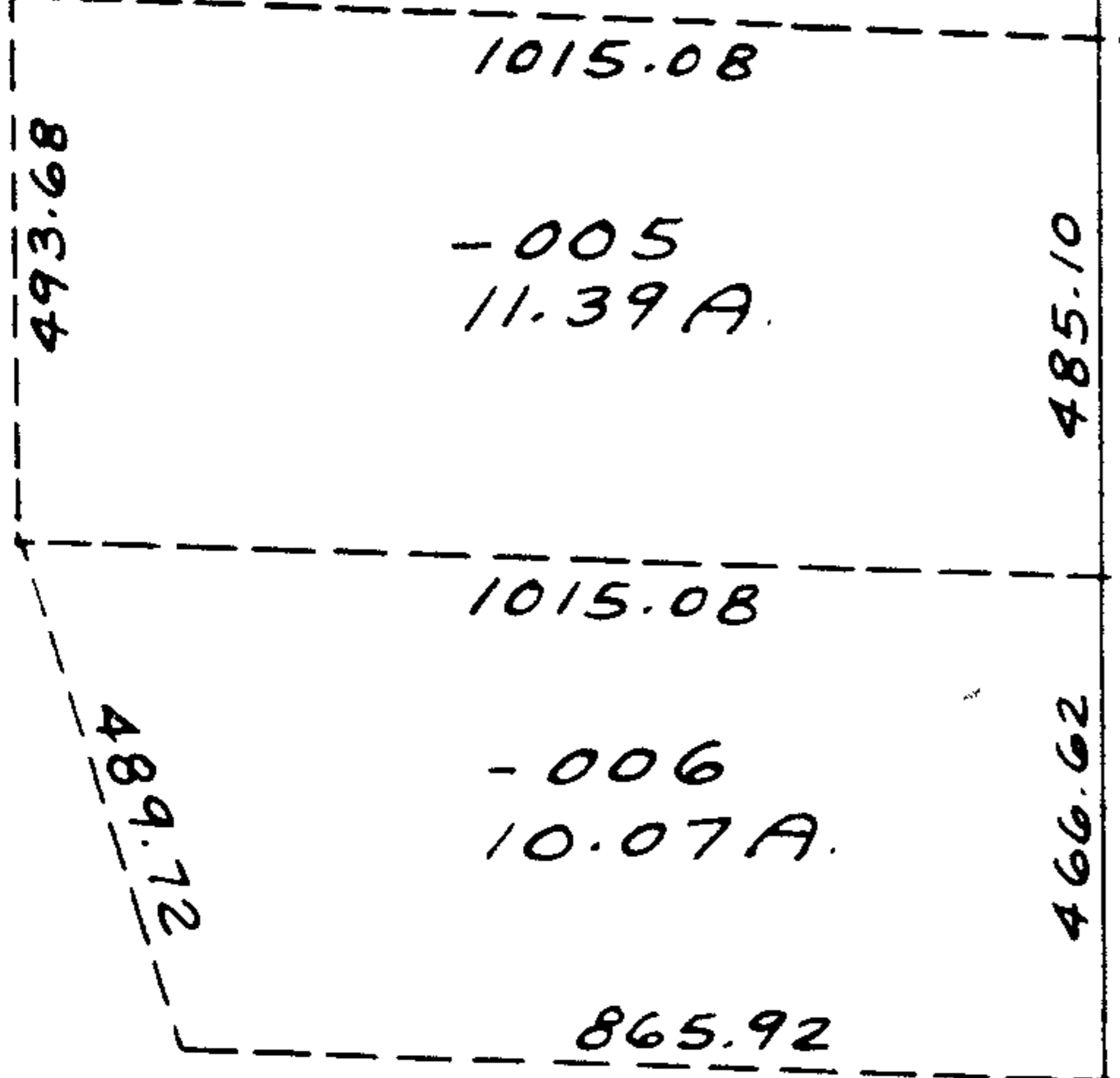
-006
6.76 A.

222.75

1949.64 *6884*

3
5

-001
32.85 A.



-005
11.39 A.

-006
10.07 A.

336.80
-006
3.87 A.

2

-005
50.19 A.



4
28 A.

300
-008
3.09 A.
300
336.80
-009
1.18 A.
793.40

C

181.5
-005
0.50
181.5

-001
1.85 A.
336.80

-002
9.475 A.

A

6884

-003
34.17 A.

P.R.S.

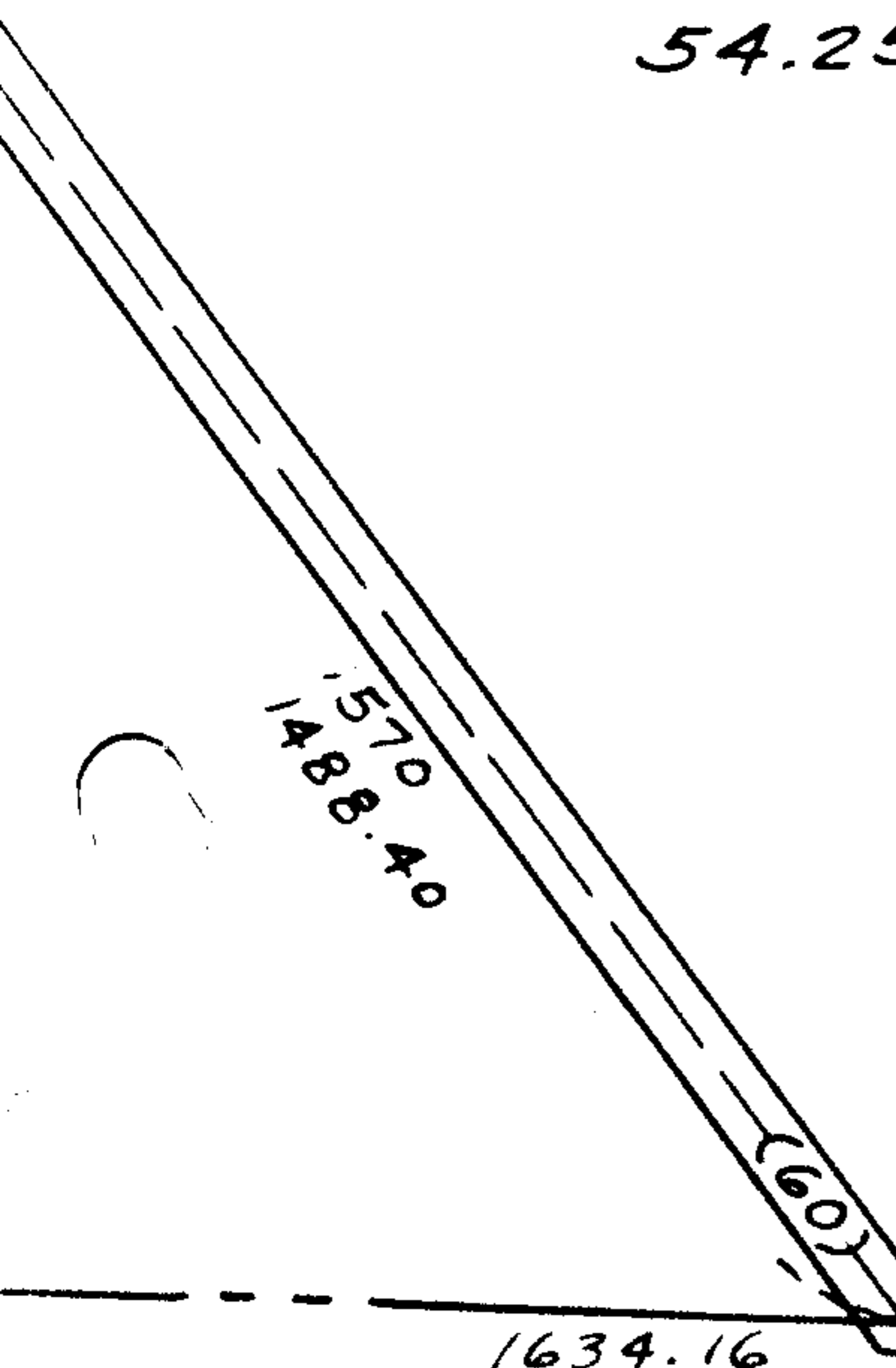
-004
54.25 A.

APPROVED
LORAIN CO.
MAP DEPT.
DATE 4-6-73
8-E
BY *Lorain*

C-M-OK
19

-010
35.79 A.

-006
4.13 A.



RD.

150
-005
1.99 A.
243.75
-007
3.80 A.
423.82
172
226.50
98
121.70
150
149.80
152.95