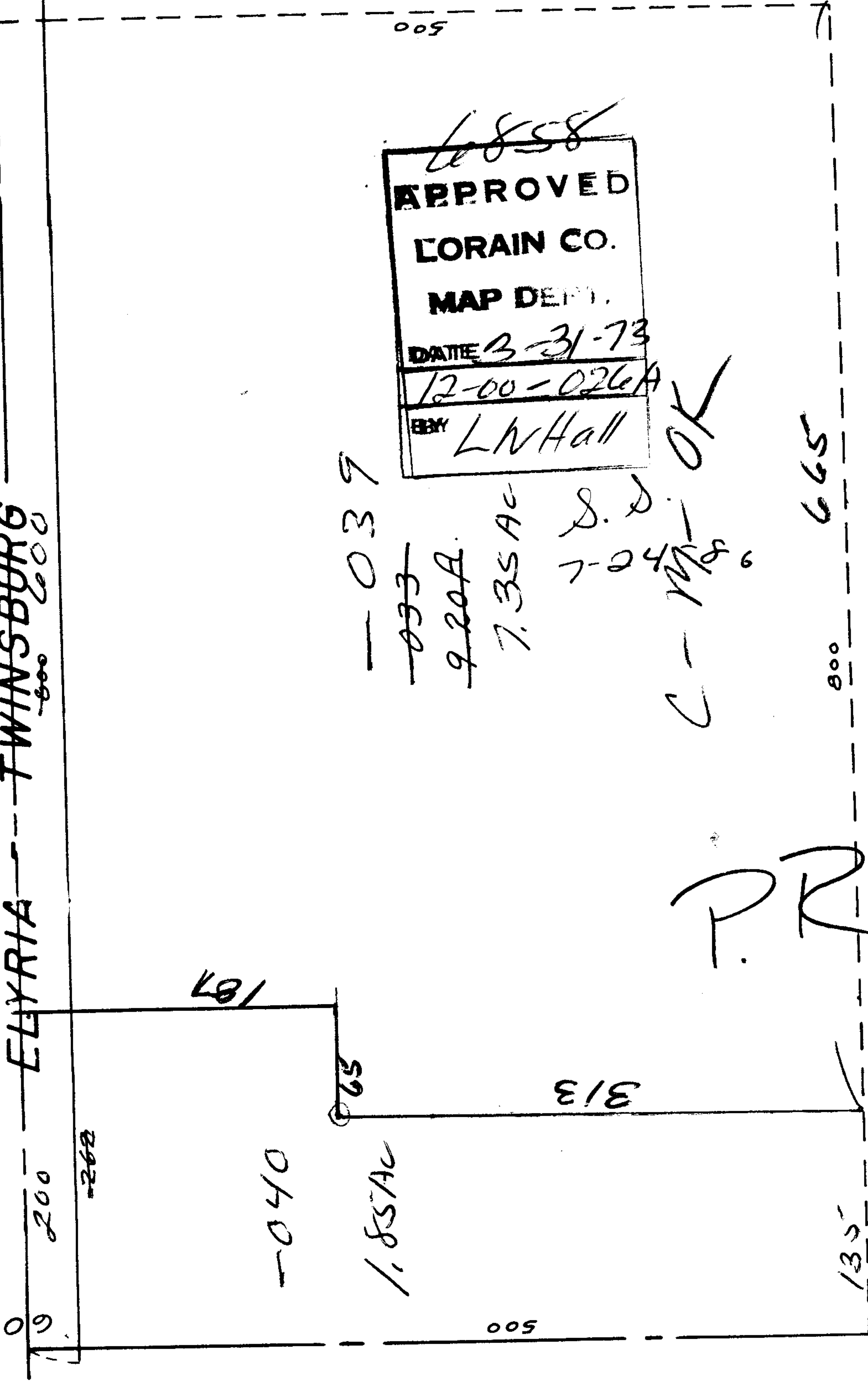




SEE 12-00-025-A

ELYRIA TWINSBURG



6858
APPROVED
LORAIN CO.
MAP DEPT.
 DATE 3-31-73
 12-00-026A
 BY LNHall

039

033

920A

7.35 AC

S.D.
7-24-76

C-MR-OK

665

800

187

63

040

1.85 AC

313

135

500

P.R.
S.