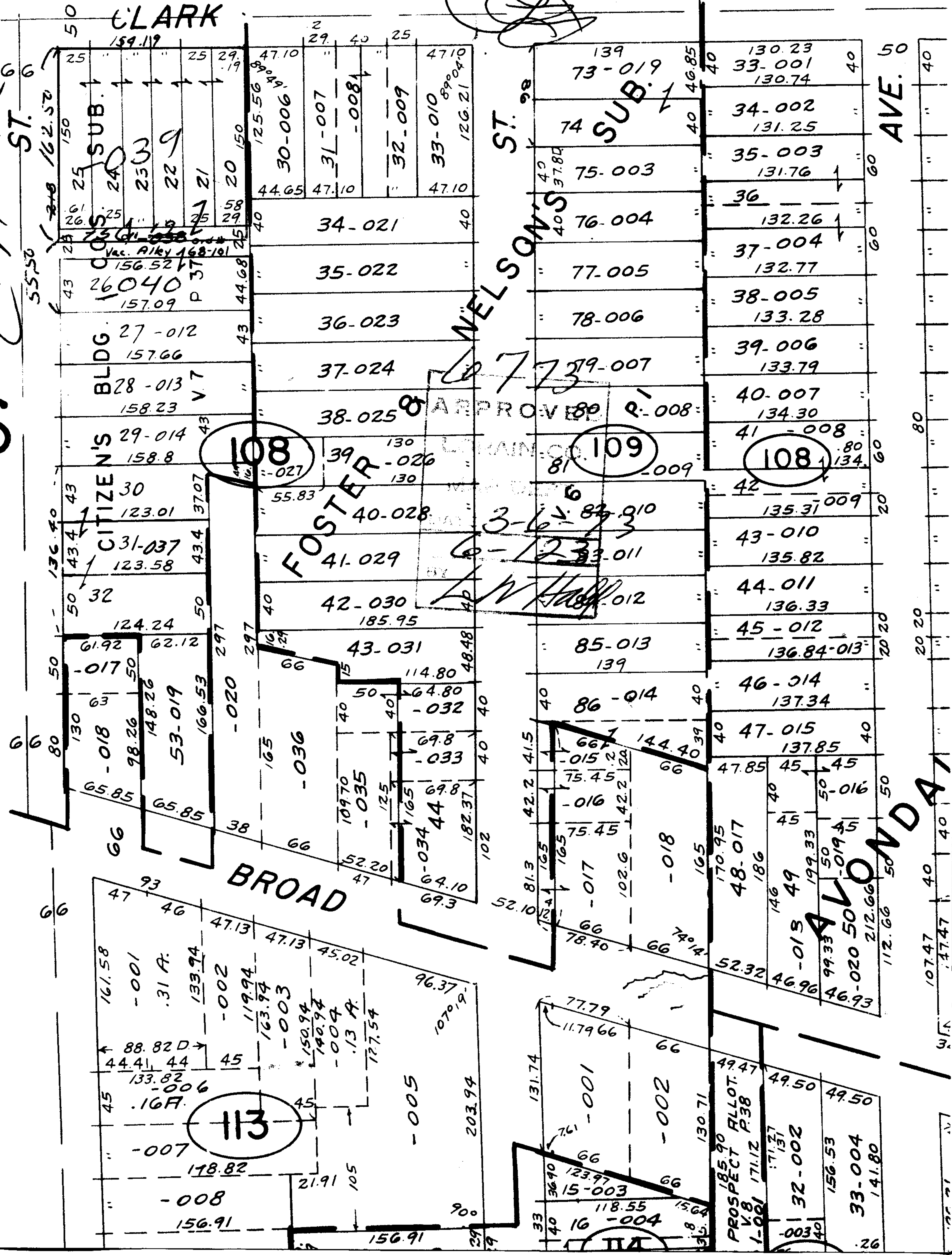


16

CLARK

6773



108

109

108

113

114

AVE.

AVALONDA

APPROVED

3-6-73

AP

PROSPECT ALLOT.

V.B.

Vac. Alley 168-101

BLDG.

28-013

29-014

30

31-037

32

33-017

34-018

35-019

36-020

37-021

38-022

39-023

40-024

41-025

42-026

43-027

44-028

45-029

46-030

47-031

48-032

49-033

34-021

35-022

36-023

37-024

38-025

39-026

40-027

41-028

42-029

43-030

44-031

45-032

46-033

47-034

48-035

49-036

50-037

51-038

52-039

53-040

54-041

55-042

56-043

57-044

58-045

59-046

30-006

31-007

32-008

33-009

34-010

35-011

36-012

37-013

38-014

39-015

40-016

41-017

42-018

43-019

44-020

45-021

46-022

47-023

48-024

49-025

50-026

51-027

52-028

53-029

54-030

55-031

73-019

74-020

75-021

76-022

77-023

78-024

79-025

80-026

81-027

82-028

83-029

84-030

85-031

86-032

87-033

88-034

89-035

90-036

91-037

92-038

93-039

94-040

95-041

96-042

97-043

98-044

73-019

74-020

75-021

76-022

77-023

78-024

79-025

80-026

81-027

82-028

83-029

84-030

85-031

86-032

87-033

88-034

89-035

90-036

91-037

92-038

93-039

94-040

95-041

96-042

97-043

98-044

73-019

74-020

75-021

76-022

77-023

78-024

79-025

80-026

81-027

82-028

83-029

84-030

85-031

86-032

87-033

88-034

89-035

90-036

91-037

92-038

93-039

94-040

95-041

96-042

97-043

98-044

73-019

74-020

75-021

76-022

77-023

78-024

79-025

80-026

81-027

82-028

83-029

84-030

85-031

86-032

87-033

88-034

89-035

90-036

91-037

92-038

93-039

94-040

95-041

96-042

97-043

98-044

73-019

74-020

75-021

76-022

77-023

78-024

79-025

80-026

81-027

82-028

83-029

84-030

85-031

86-032

87-033

88-034

89-035

90-036

91-037

92-038

93-039

94-040

95-041

96-042

97-043

98-044

AVE.

AVALONDA

PROSPECT ALLOT.

V.B.