

6708

-008
1.51A.

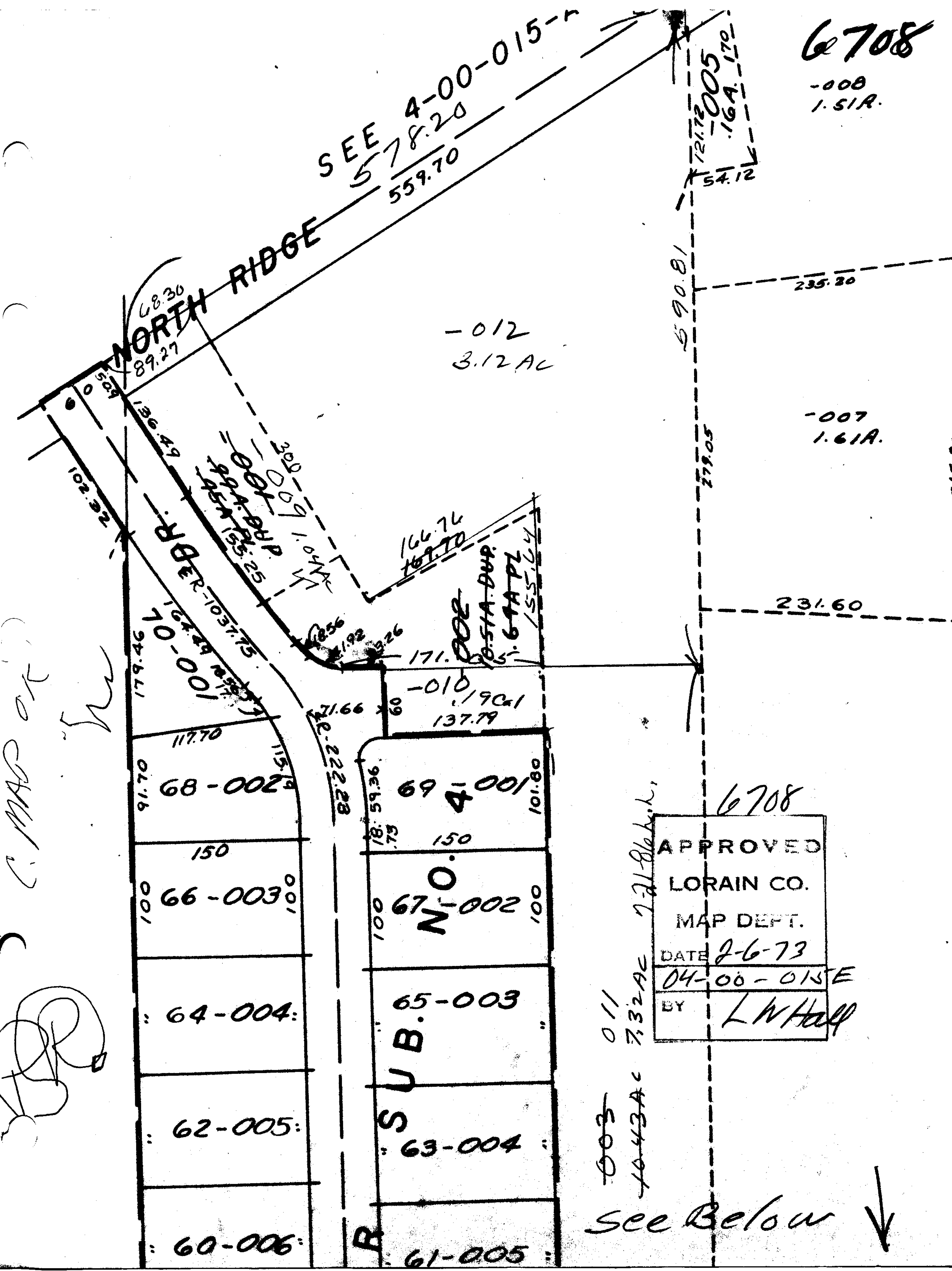
SEE 4-00-015-n
578.20
559.70

NORTH RIDGE

-012
3.12 AC

-007
1.61A.

C. MADON
[Handwritten scribbles]



6708
APPROVED
LORAIN CO.
MAP DEPT.
DATE 2-6-73
04-00-015 E
BY LWHall

~~003~~ 011
~~1043AC~~ 732AC 72186h.h.

see Below ↓