

Pt. - 00  
Pt. 30.0

6579

85.90  
392.85

826

395.76

300

349.64

- 002  
15.00 A.

- 001  
80.00 A.

- 004  
2.60 A.

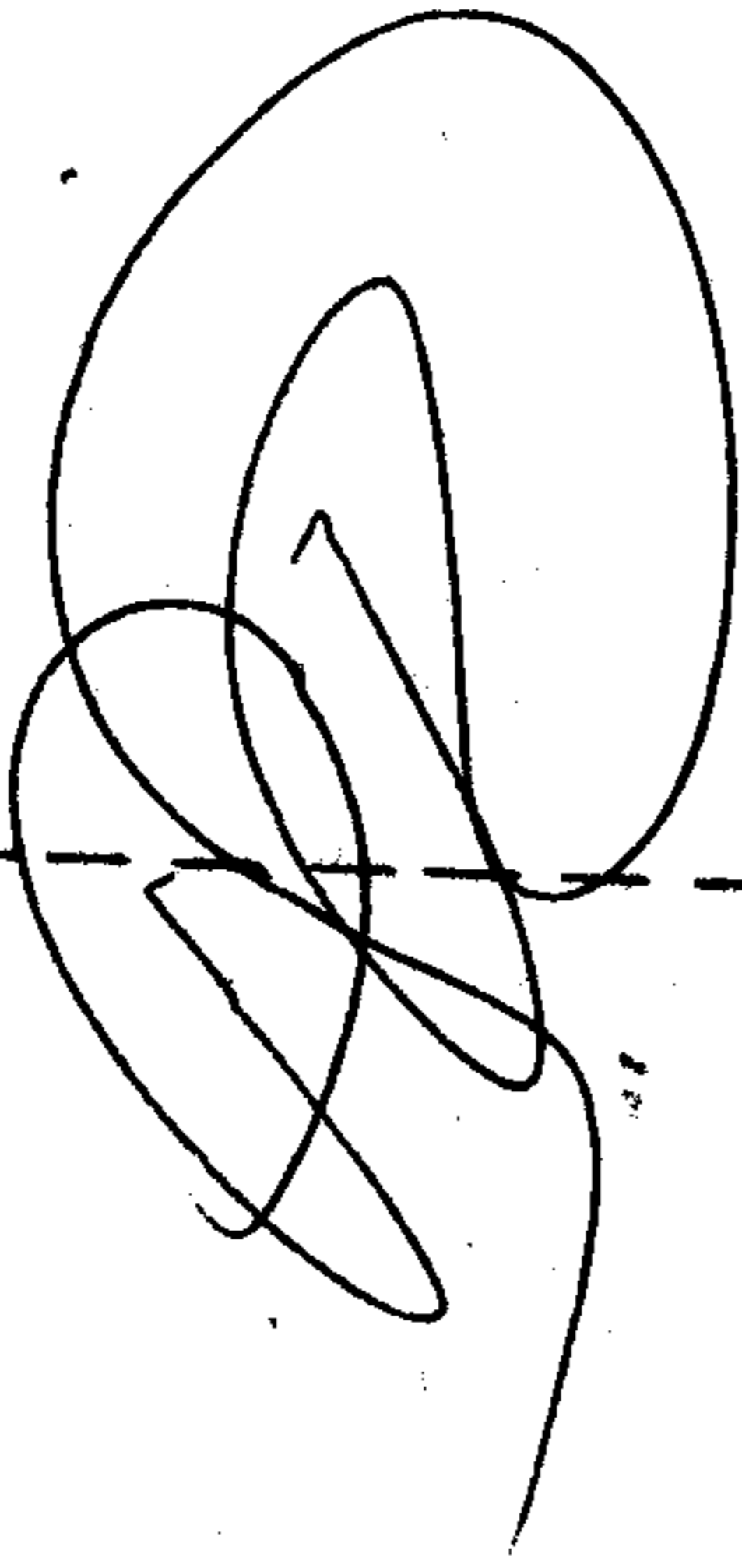
- 005  
3.40 A.

340 Ac 740.41  
- 008

6.00 A Ac  
- 007 2.60  
740.41 630

29

- 006  
25.15 A.



- 006  
60.00 A.

6579

APPROVED

LORAIN CO.

MAP DEPT.

DATE 12-8-72

16D

BY L.W. Hall

2-25-86 L.H.H.

2705.6

- 012  
22.50 A.

2706.8

- 011  
3.00 A.  
547

Dup.  
Deed

89°34'  
437.50  
410.5  
89°16'

90°49'

90°34'

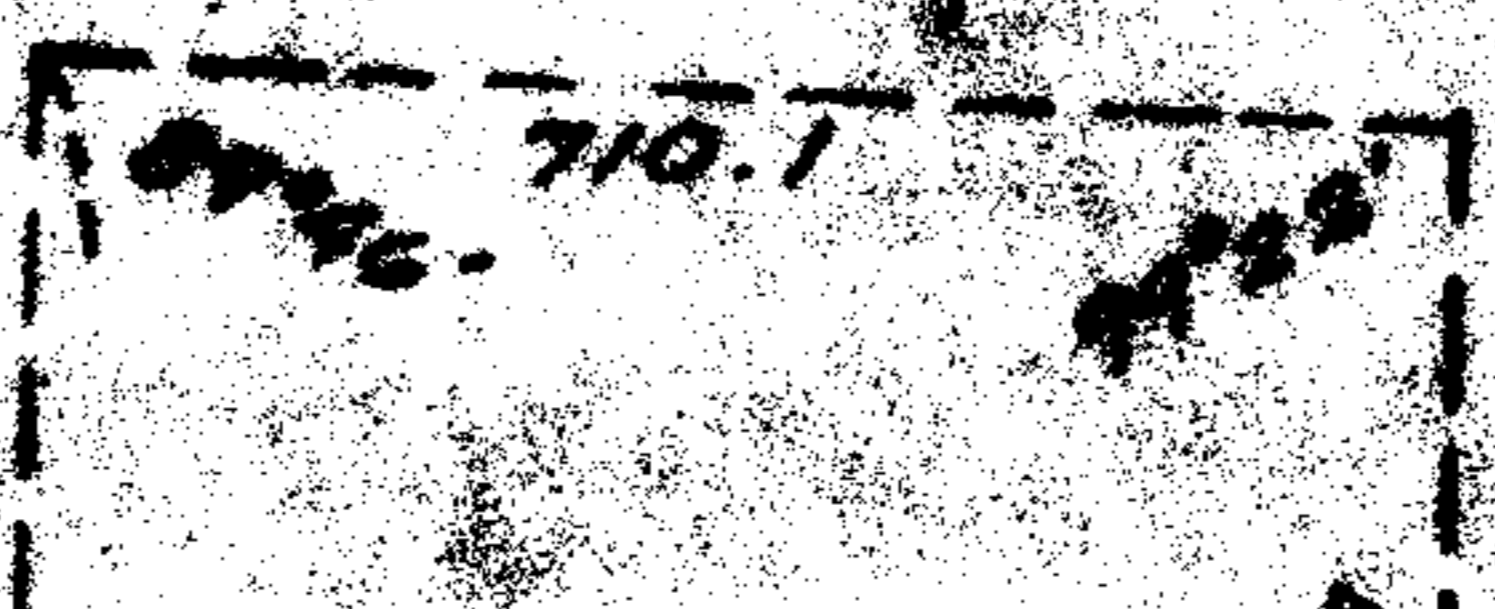
990

567.27

89°

392  
- 00  
1.1  
4.3  
- 0.  
1.3  
- 4.  
- 0.  
1.0

961.9



16D