

6491

6491

# 6491

$$375 \times 182 = 68,250$$

$$A \frac{29}{188} \times 256 = 23,040$$

$$\Delta \frac{37}{24} \times 260 = 9,620$$

$$A \frac{66}{66} \times 125 = 6,468$$

$$\Delta \frac{115}{115} \times 12 = 20$$

By Calculation  
2.49Ac  
-048

-034  
7.05A

90

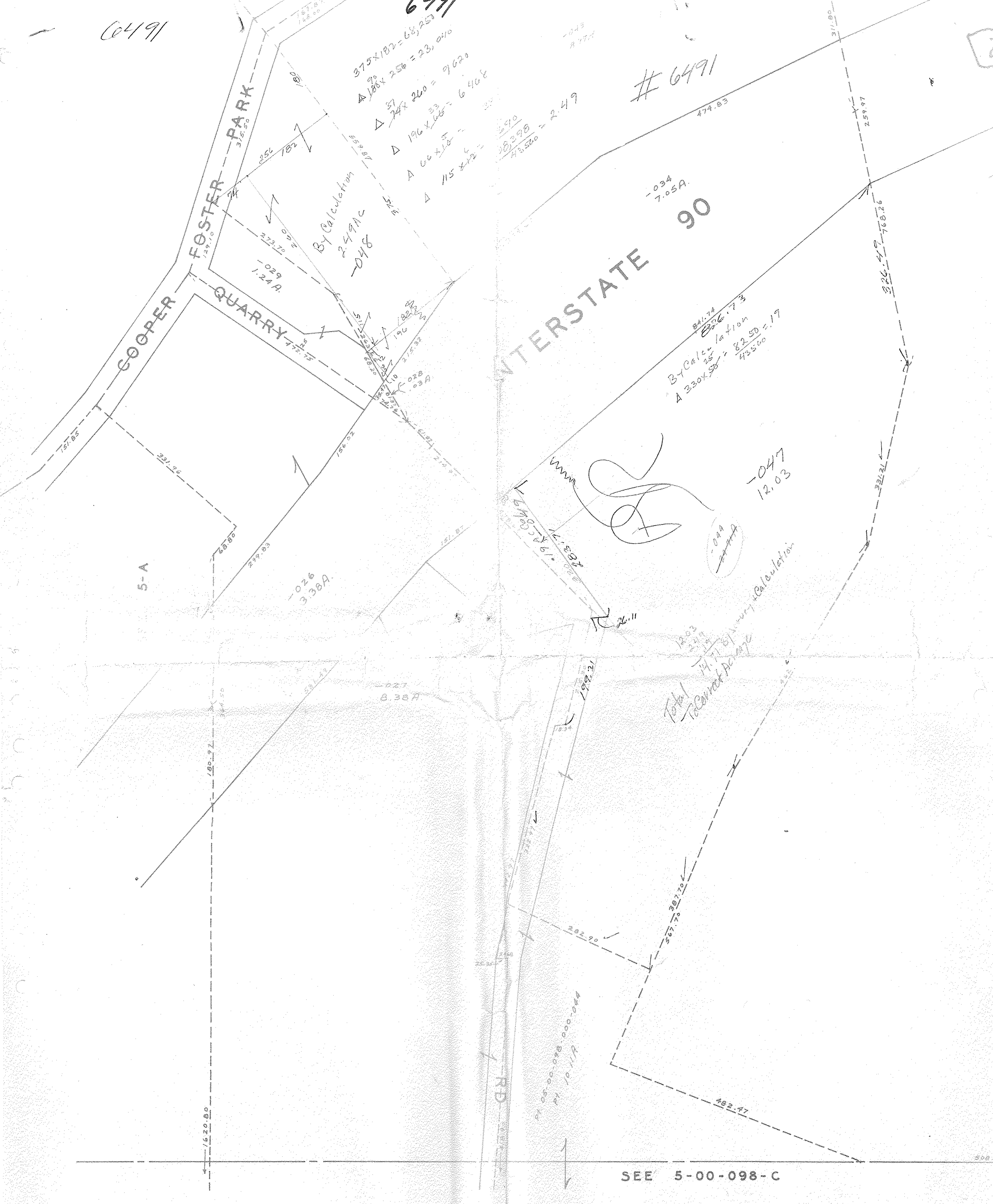
$$By\ Calculation$$

$$A \frac{841.74}{330} \times 10 \times 104 = 82,560$$

$$A \frac{82.50}{43560} = 1.73$$

-047  
12.03

Total  
To Convert Ac to Sq Ft  
By Survey & Calculation



SEE 5-00-098-C