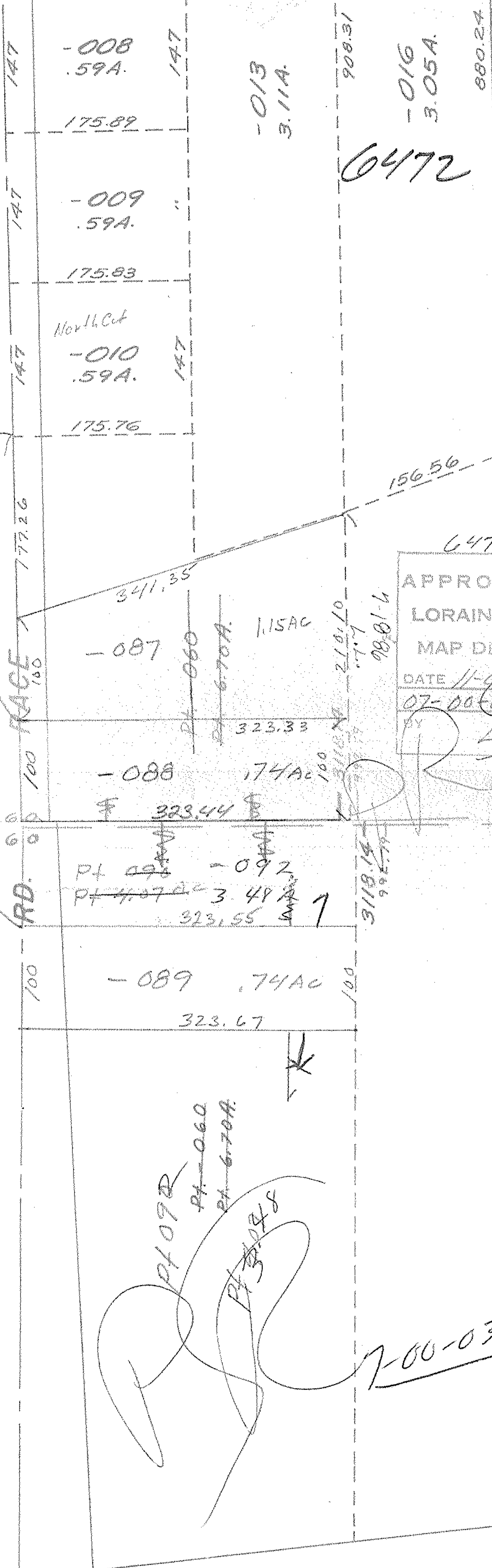


SEE

7-00-039-D

Handwritten signature



4177.26
277.26
777.26
RD. 100
FACE 100

147
-008
.59A.
175.89
147
-009
.59A.
175.83
North Cut
-010
.59A.
175.76
147

-087 1.15AC
Pt. 060
Pt. 670A
323.33
-088 .74AC
\$ 323.44
Pt. 092
Pt. 407
3.48A
323.55

-089 .74AC
323.67

Pt. 092
Pt. 060
Pt. 670A
Pt. 3108
Pt. 3108

908.31
-013
3.11A.
6472
-016
3.05A.
880.24

6472
APPROVED
LORAIN CO.
MAP DEPT.
DATE 11-6-72
07-00-034A
BY L. D. Hall

6472
3 -022
5 -024
203.73
263.73
EVERGREEN
ALLI

7-00-034C

OHIO
7-00-034C