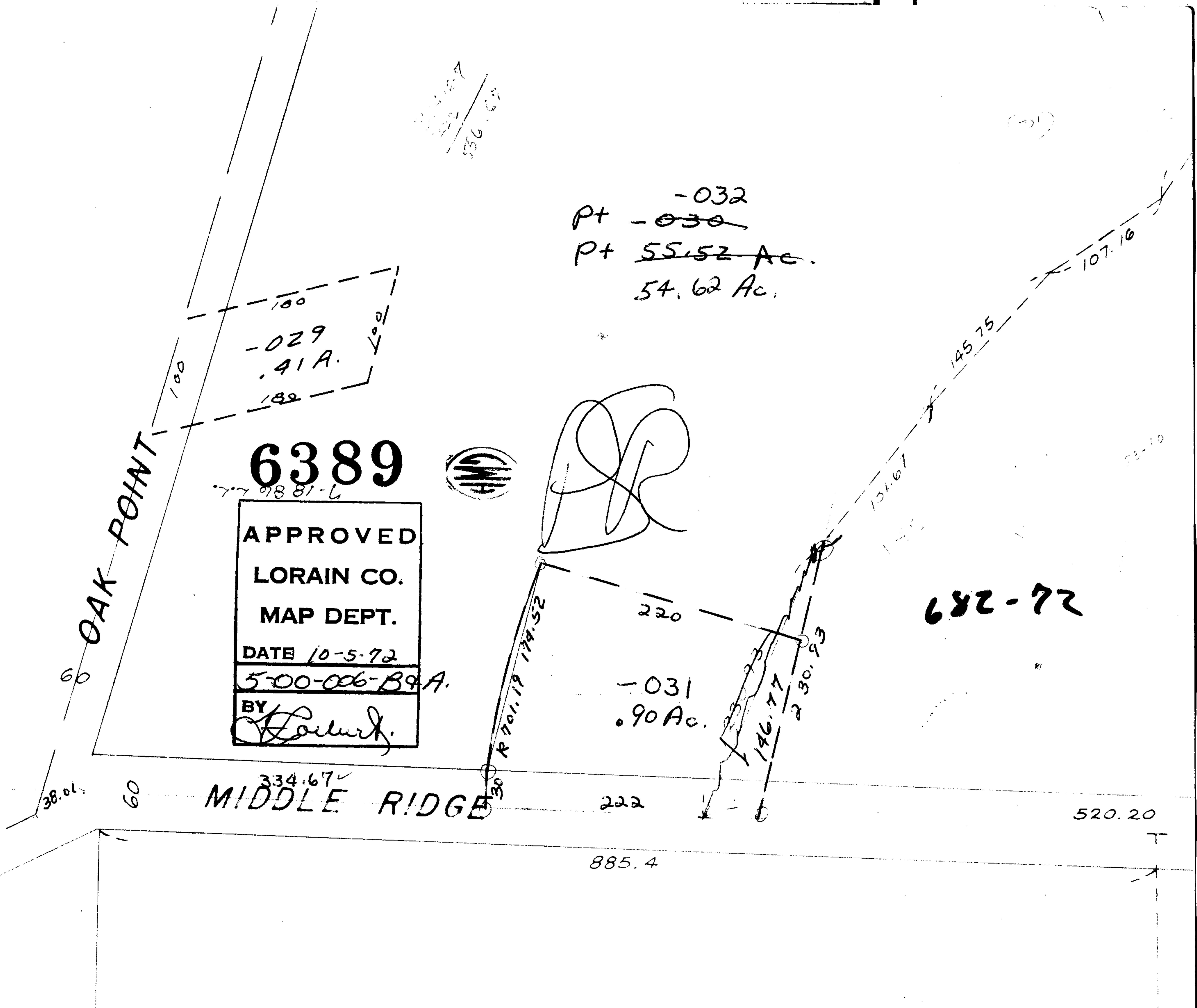


6389

SEE 5-00-006-A



121.67  
145.75  
107.16

-032  
Pt -030  
Pt 55.52 Ac.  
54.62 Ac.

6389

APPROVED  
LORAIN CO.  
MAP DEPT.  
DATE 10-5-72  
5-00-006-B9A.  
BY [Signature]

682-72

OAK POINT

MIDDLE RIDGE

-031  
.90 Ac.

520.20

885.4

38.01

60

334.67

222

220

230.93

146.77

30

179.52

1701.19

121.67

145.75

107.16

33-10