

105017

12

1069.33

-006  
2.00A

148.74

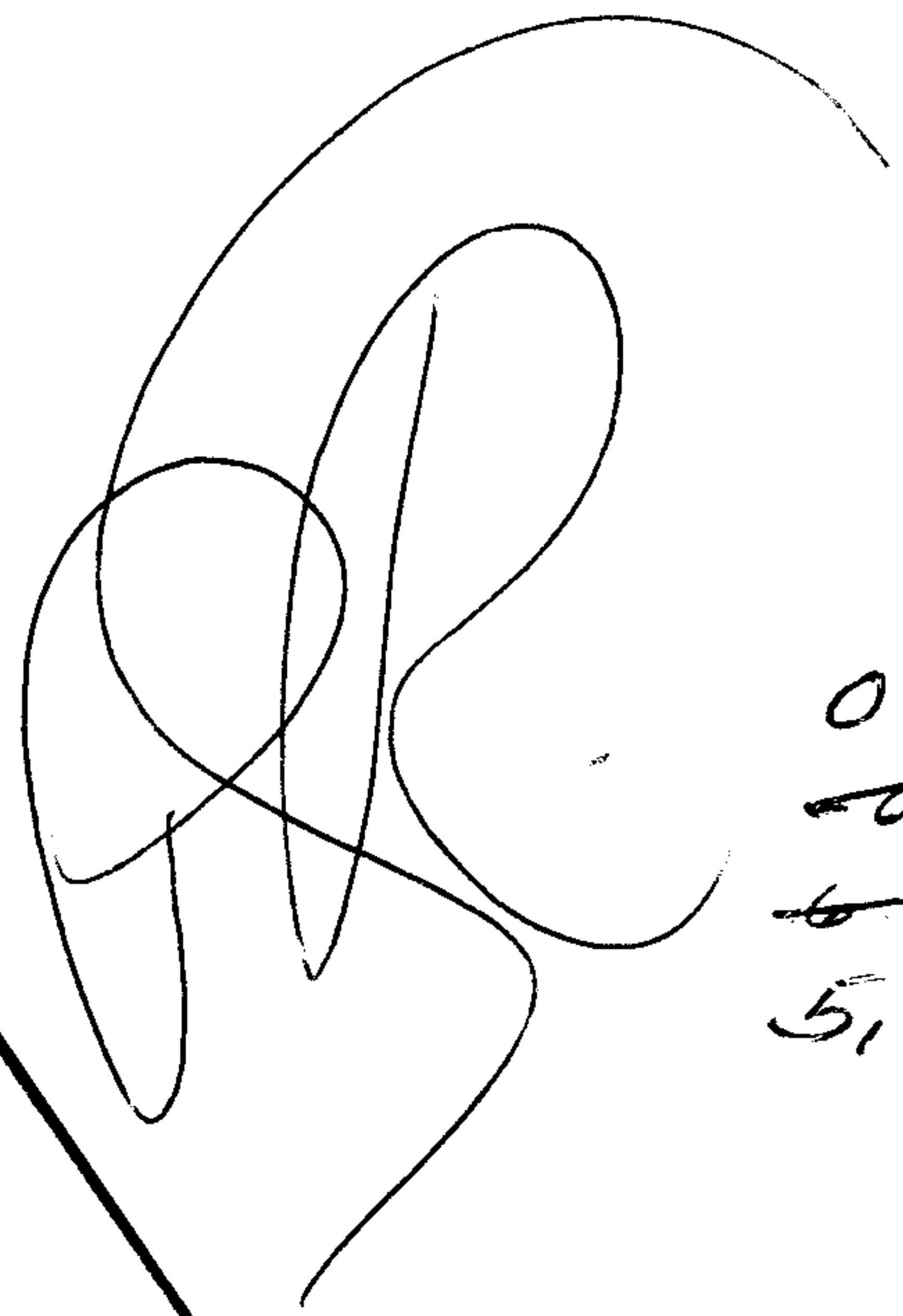
157.01

318

-014  
.569

192.40

118.92



019  
~~017~~  
~~6-81A~~  
5.71AC

6364  
RECORDED  
LORAIN CO.  
MAP DEPT.  
DATE 9-27-72  
07-00-014A  
BY L. WITKOWSKI

018  
APQ. B<sup>2</sup>  
90 AK

016 A  
690

90

7-00-014A

206  
01A

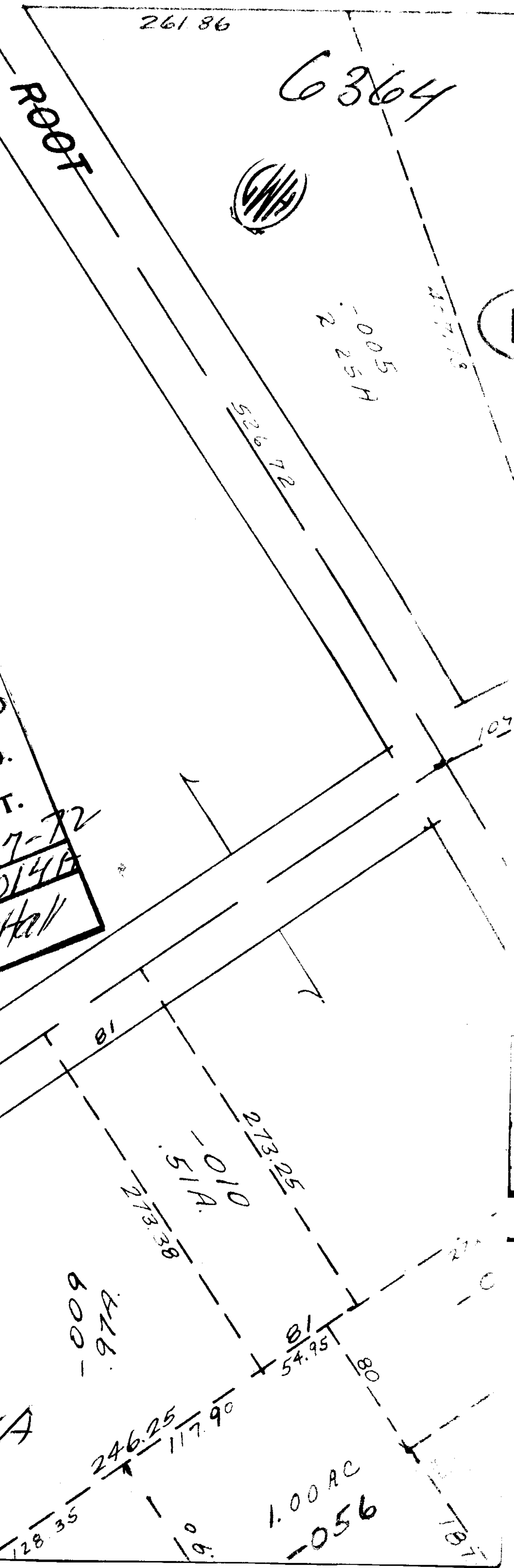
80

341.26

009  
97A

246.25  
117.90

1.00 AC  
-056



261.86

RECORDED

6364



-005  
2.25H

526.72

4-7-73

109

81

010  
51A  
273.25  
273.38

81  
54.95

80

27

109