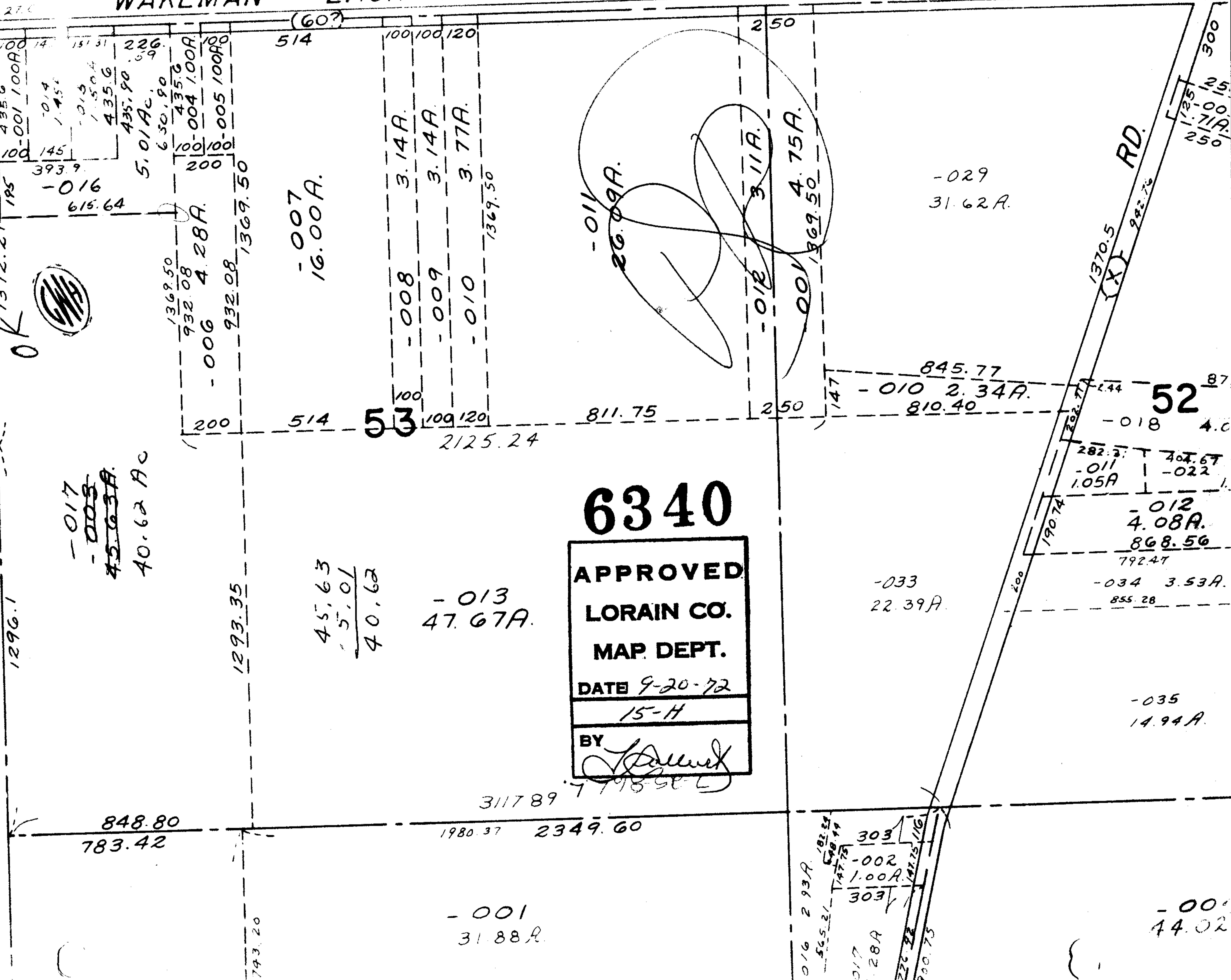


6340

15-H



27.0
 100-001 100A
 145
 393.9
 195
 1372.21
 435.6
 145
 151.31
 226.59
 1.45
 1.50
 435.6
 435.90
 5.01 AC.
 630.90
 435.6
 100-004 100A
 100
 100-005 100A
 100

2668.86
 1296.1
 848.80
 783.42
 1293.35
 743.20
 1369.50
 932.08
 4.28A.
 200
 932.08
 1369.50
 1369.50
 40.62 AC

(60?)
 514
 100
 100
 100
 120
 3.14A.
 3.14A.
 3.77A.
 1369.50
 -007
 16.00A.

53
 100
 100
 120
 2125.24
 811.75
 250
 147
 845.77
 -010 2.34A.
 810.40
 45.63
 5.01
 40.62
 -013
 47.67A.
 -001
 31.88A.

250
 -011
 26.09A.
 -012
 3.11A.
 001
 4.75A.
 869.50

52
 87
 4.0
 282.3
 -011
 1.05A
 407.67
 -022
 -012
 4.08A.
 868.56
 792.47
 -034 3.53A.
 855.28
 -033
 22.39A.
 -035
 14.94A.
 -002
 44.02
 311789
 779850
 1980.37
 2349.60

RD.
 1370.5
 942.76
 1.25
 1.00
 250
 300

190.74
 200
 202.71
 2.44
 182.24
 565.21
 147.75
 303
 -002
 1.00A
 303
 3.28A
 226.22
 900.75

6340
APPROVED
LORAIN CO.
MAP DEPT.
DATE 9-20-72
15-H
BY [Signature]