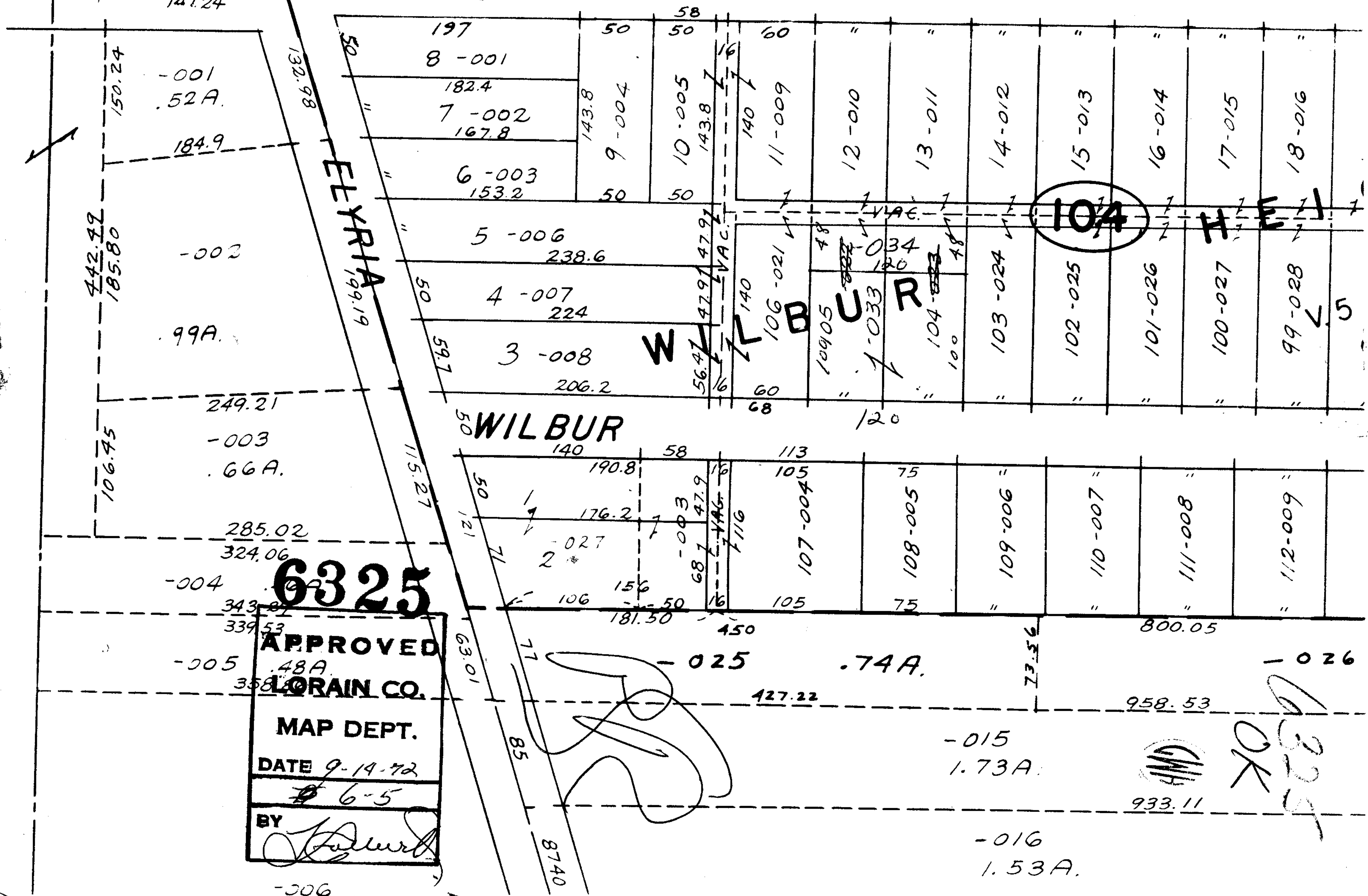


SEE 3-00-III-A



177± NORTH RIDGE 6
141.24



-001
.52 A.

-002
99A.

-003
.66 A.

-004
339.53

-005
358.53

6325

APPROVED
LORAIN CO.
MAP DEPT.
DATE 9-14-72
6-5
BY *[Signature]*

104

HELI

R

OK
6325

-015
1.73A.

-016
1.53A.

