

1088 CROCKER

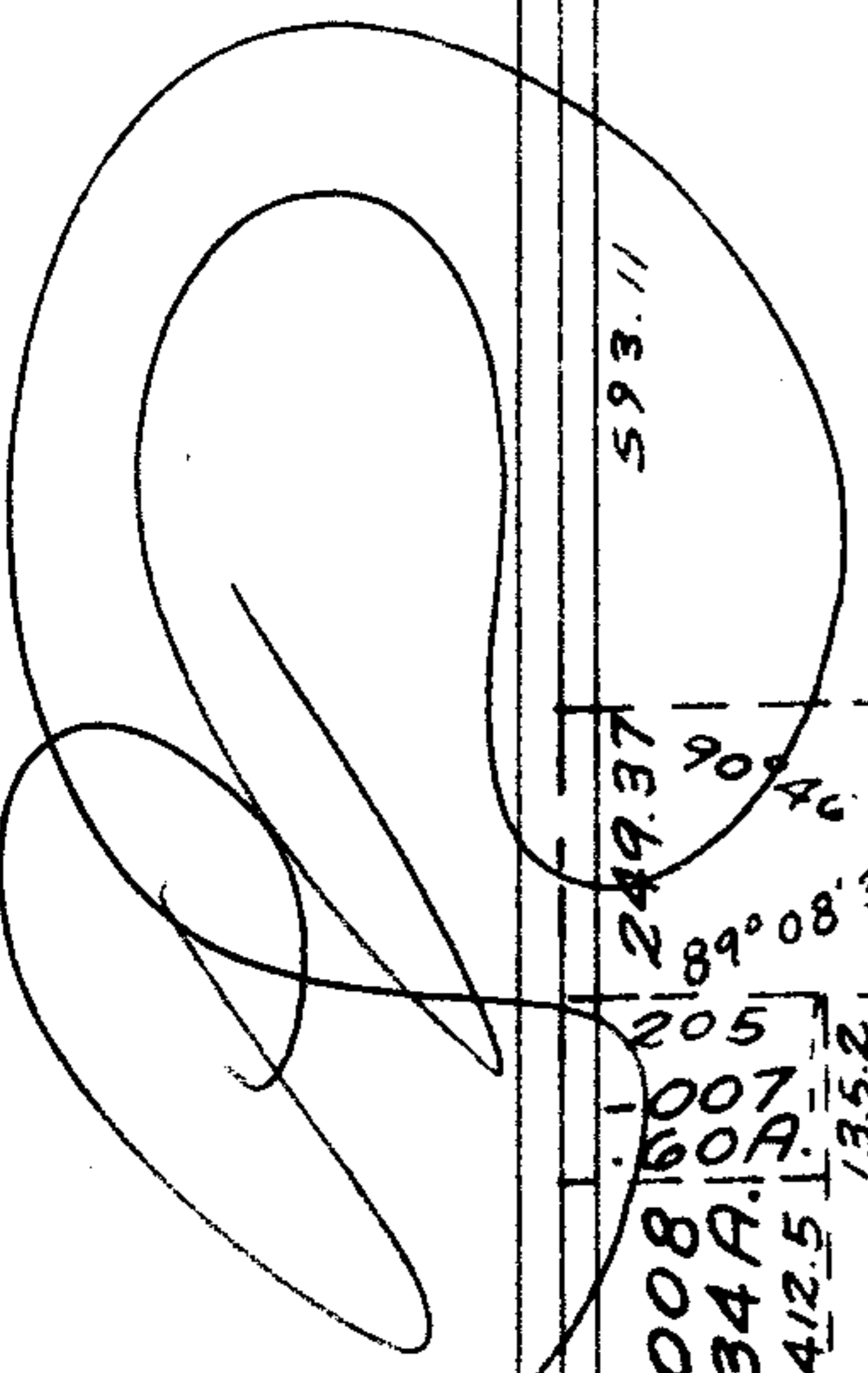
RD 6271

M.I.G. RD.

OK



6271
 APP...
 LO...
 M...
 DATE 8-28-72
 16D
 BY L W Hall



435.60
 -007 1.00A.
 435.60

354.15
 -005
 1.00A.
 354.15
 435.10

-001
 21.40A.

-009
 13.6A.

-021
 23.64A

~~-014~~
~~51.80A.~~

-012
 17.69A.

-006
 9.89A.

~~022 - 024~~
~~28.16 AC~~
 18.16

-023
 10.00 AC

10

9.

16D

007
 6.66A.

008
 26.66A.

009
 5.66A.

10
 4A

686.26

698.60
 4092.88

1358.05

572.52

1110.35

494.74
 537.83

1736.82

1740.30

593.11
 240.62

1.25A

-012

687.31

90°54'30"

1113.84

686.98

89°05'30"

1356.91

698.33

700

205
 1.007
 1.00A.
 412.5
 135.2

249.37
 90°46'
 89°08'30"

593.11

518

-013
 9.12A.

518.36

777.50

485.45

609.99

90°45'

530.4

1547.7

1208

756

273.83

632.6

-016
 5.37A.

547.87

310

-015
 4.03A.

565.8

400

-010
 5.20A.

565.8

-011
 13.61A.

818.4

530.55

-003
 10.00A.

823.8

-004
 11.33A.

1366.86