

50 0077

R

6268
OK OK

A

1760.88

T

-003
45.82A

16

S

-004
24.28A

R

1247.6
1232.880

1247.6

1218.9

813.75

-008

827.3

3.40A

1824.90

209.25

627.7

338.3

501.71

-004
5.00A

484.11

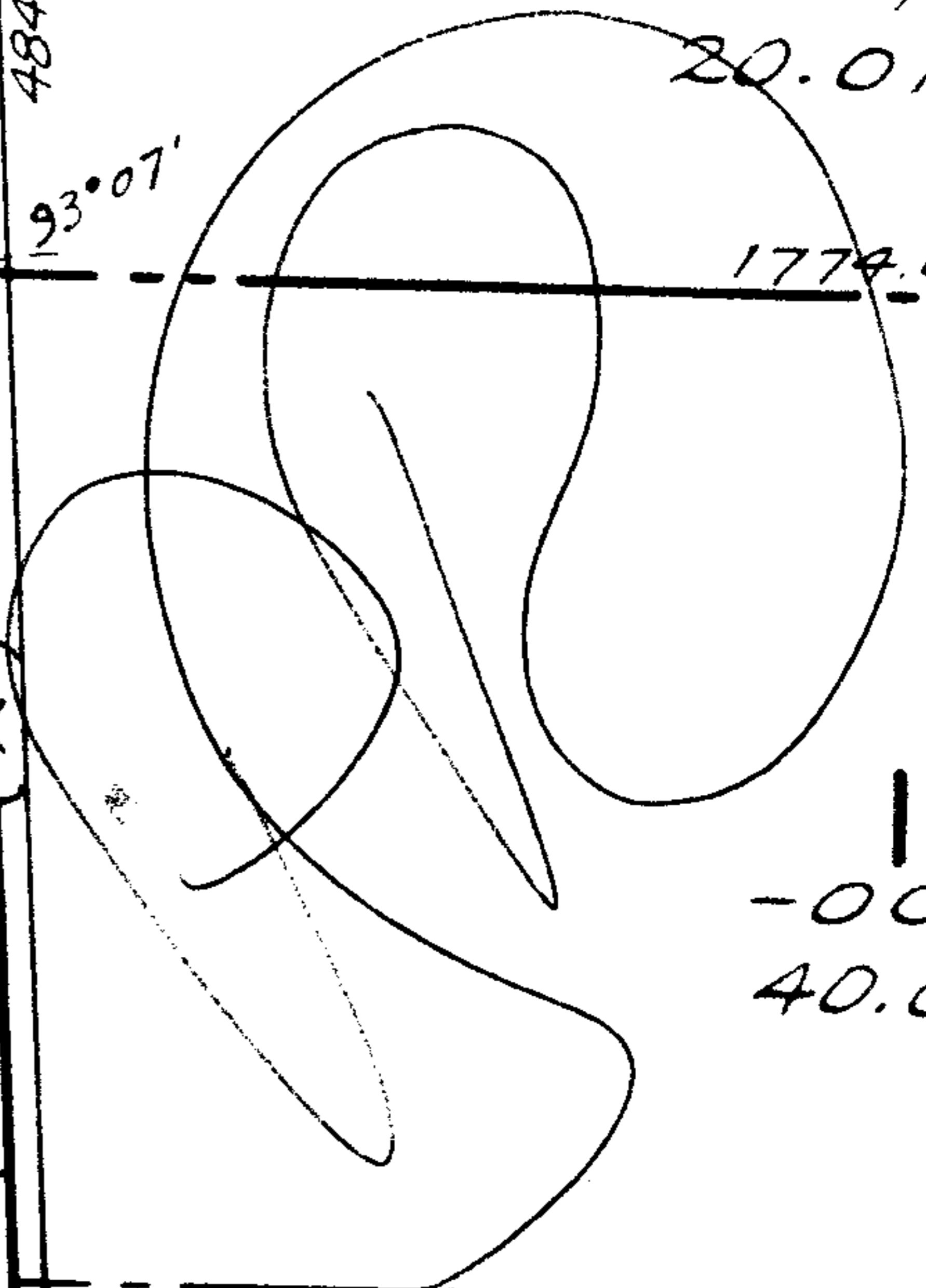
-009
20.01A

1795.20

93°07'

1774.08

6268
 APPROVED
 LORAIN CO.
 MAP DEPT.
 DATE 8-24-72
 17E
 BY L. W. Hatt
 7-2886 h.h.
 7.45A.
 67.48AC



-001
40.00A

125
192
-006
55A
192

1729.20

-004
19.00A

4 1700.0

294.95

744

-009
4.00 AC

744

294.95

495

-002
18.50A

368.94

17E

-001
21.00A

24

2