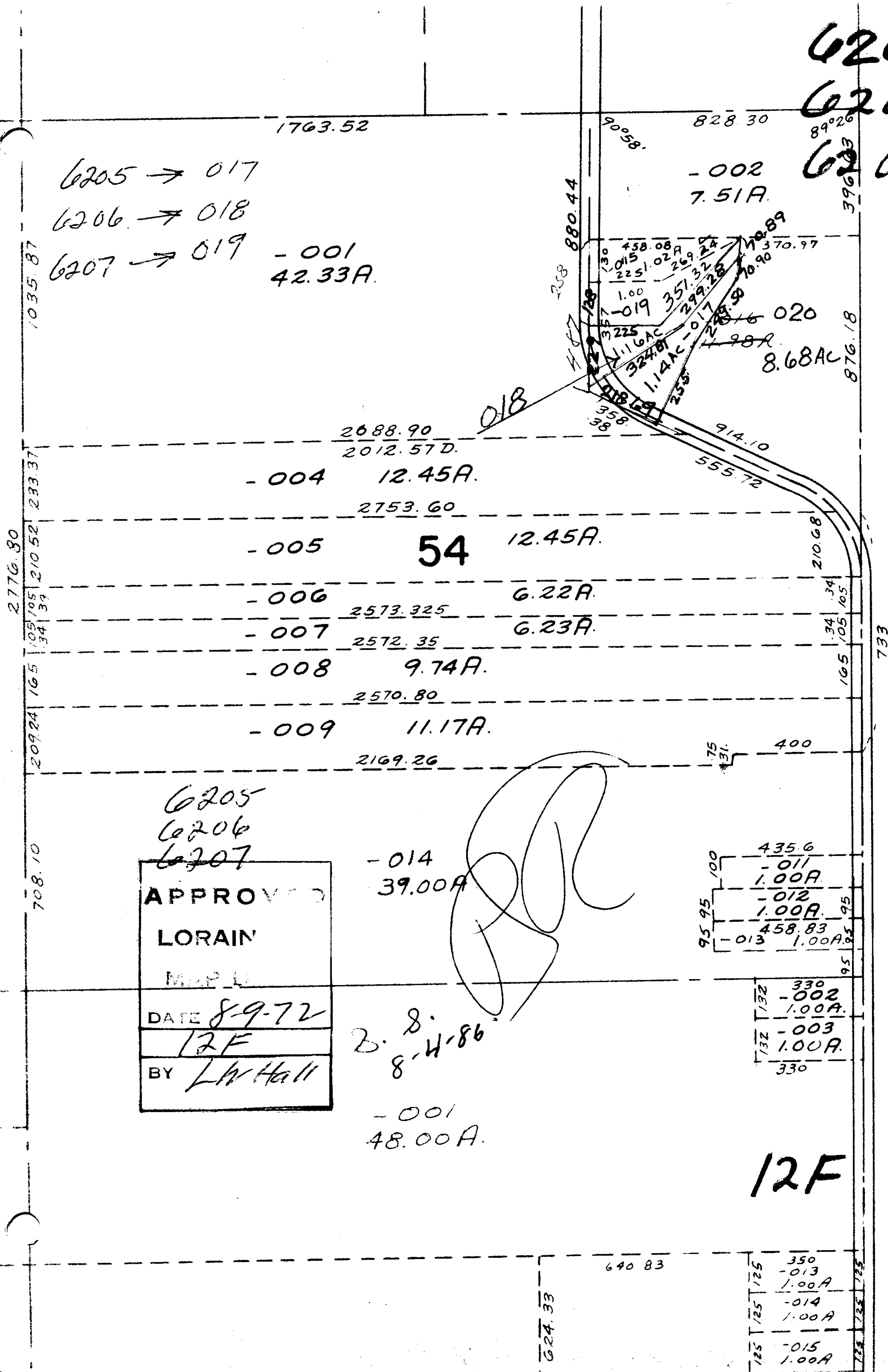


6205
 6206
 6207 OK



6205 → 017
 6206 → 018
 6207 → 019 - 001
 42.33A.



6205
 6206
 6207

APPROVED
LORAIN
MAP
DATE 8-9-72
12F
BY L.W. Hall

-014
 39.00A

B. S.
 8-11-86

-001
 48.00A.

435.6
 -011
 1.00A
 -012
 1.00A
 458.83
 -013
 1.00A

95 95 100

95 95 95

330
 -002
 1.00A
 -003
 1.00A
 330

12F

350
 -013
 1.00A
 -014
 1.00A
 -015
 1.00A

521 521 521

525 525 525