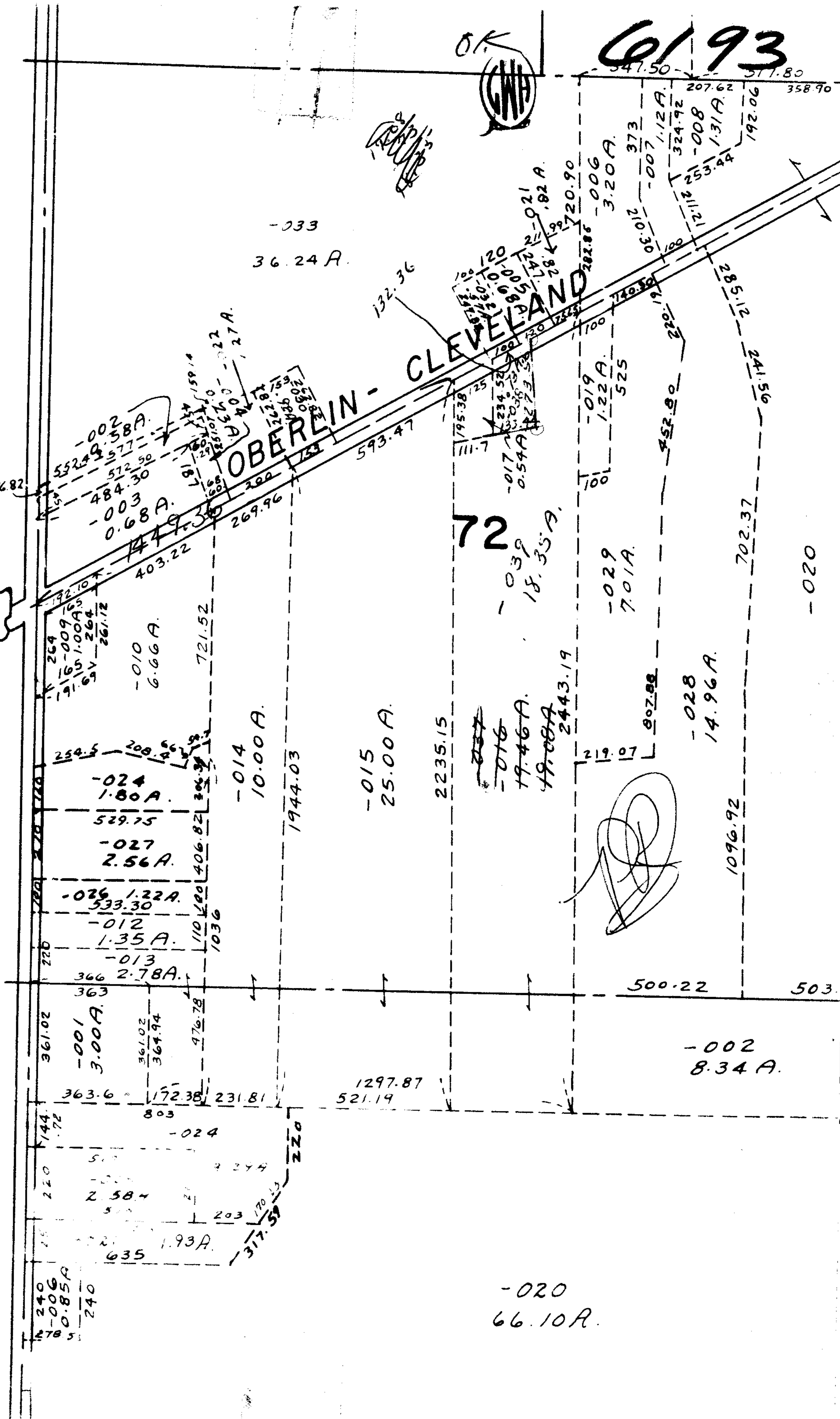
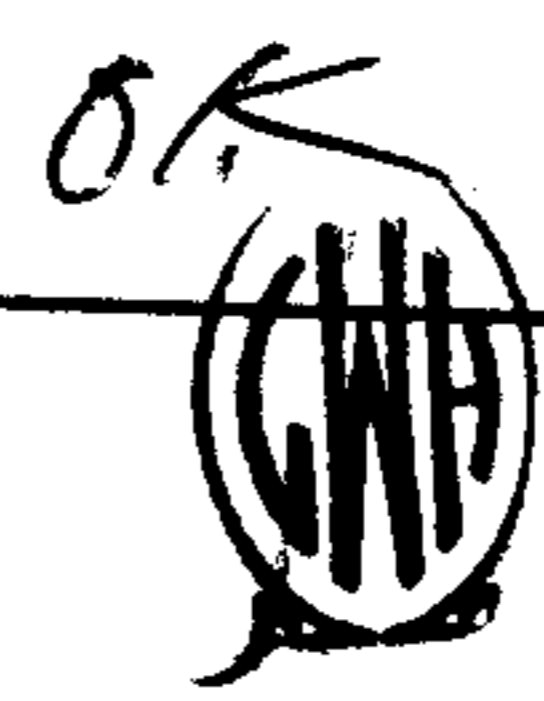


6193



6193

APPROVED
 LORAIN CO.
 MAP DEPT.
 DATE 8-4-72
 11-B
 BY *[Signature]*



72

-020
66.10A.

-002
8.34A.

-028
14.96A.

-029
7.01A.

-015
25.00A.

-014
10.00A.

-010
6.66A.

-008A.
0.68A.

-002
552.29
577.50
484.30

-024
1.80A.
529.75

-027
2.56A.

-026
1.22A.
533.30

-012
1.35A.

-013
2.78A.

-001
3.00A.

361.02
361.02
364.94

-024

2.58A.

635 1.93A.

240
-006
0.85A
240

500.22

503

1096.92

807.88

219.07

19.08A.
2443.19

19.46A.

18.35A.

2235.15

1944.03

721.52

403.22

269.96

192.10

16.82

702.37

285.12
241.56

207.62

324.92

373

3.20A.

120.90

2.021

120

120

120

132.36

-033

36.24A.

-020

358.90

517.80

547.50

192.06

1.12A.

0.012

0.012

0.012

0.012

0.012

0.012

0.012

0.012

0.012

0.012

0.012

0.012

0.012

0.012

0.012

0.012

0.012

0.012

0.012

0.012

0.012

0.012

0.012

0.012

0.012

0.012