
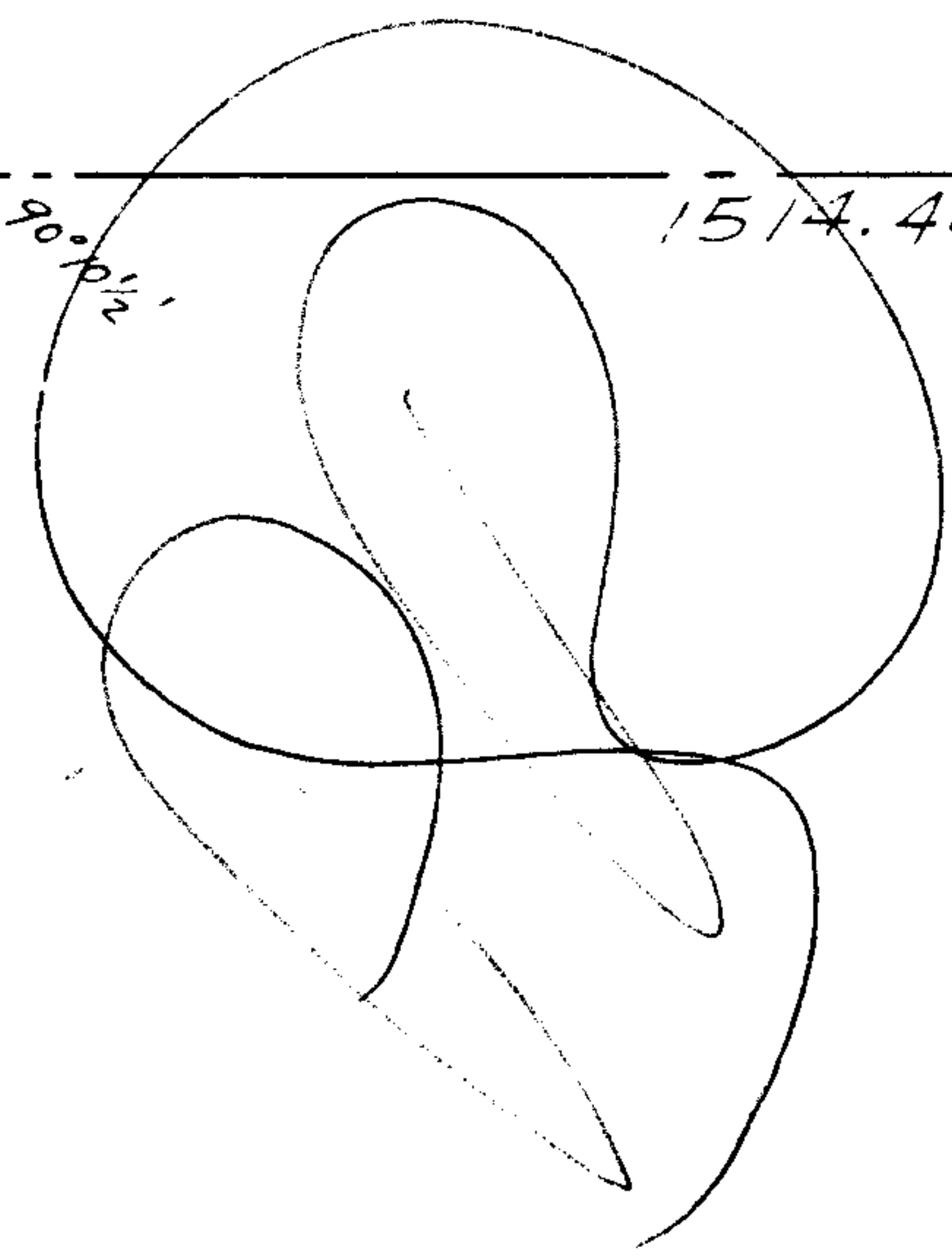


-003  
52.00 A.

6187  
OK 



1514.40

2821.6

-001  
96.75 A.

30

6187

APPROVED  
LORAIN CO.  
MAP DEPT.  
DATE 8-2-72  
17-D  
BY *[Signature]*

R 2808.5

497.2

-003  
5.50 A.

499.27

-010  
10.03 A.

497.15

-009  
5.47 A

496

-005  
5.46 A.

494.85

-007  
5.54 A

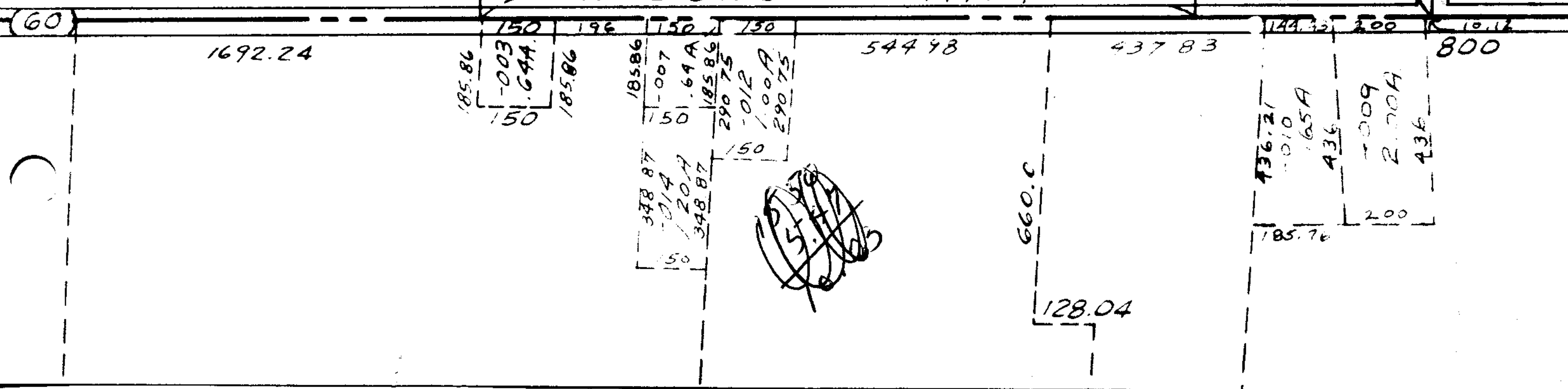
497.2

PECK

WADSWORTH 1494.7

MOSIER

1755.0



1692.24

544.98

437.83

800

128.04

66.20  
-004  
1.08 A.

481.65  
-003  
6.20

555

-52  
-00  
2.4  
480

960

(40? 60?) 480

436.21  
-010  
1.65 A  
436

-009  
2.70 A  
436

185.76

200

10.12