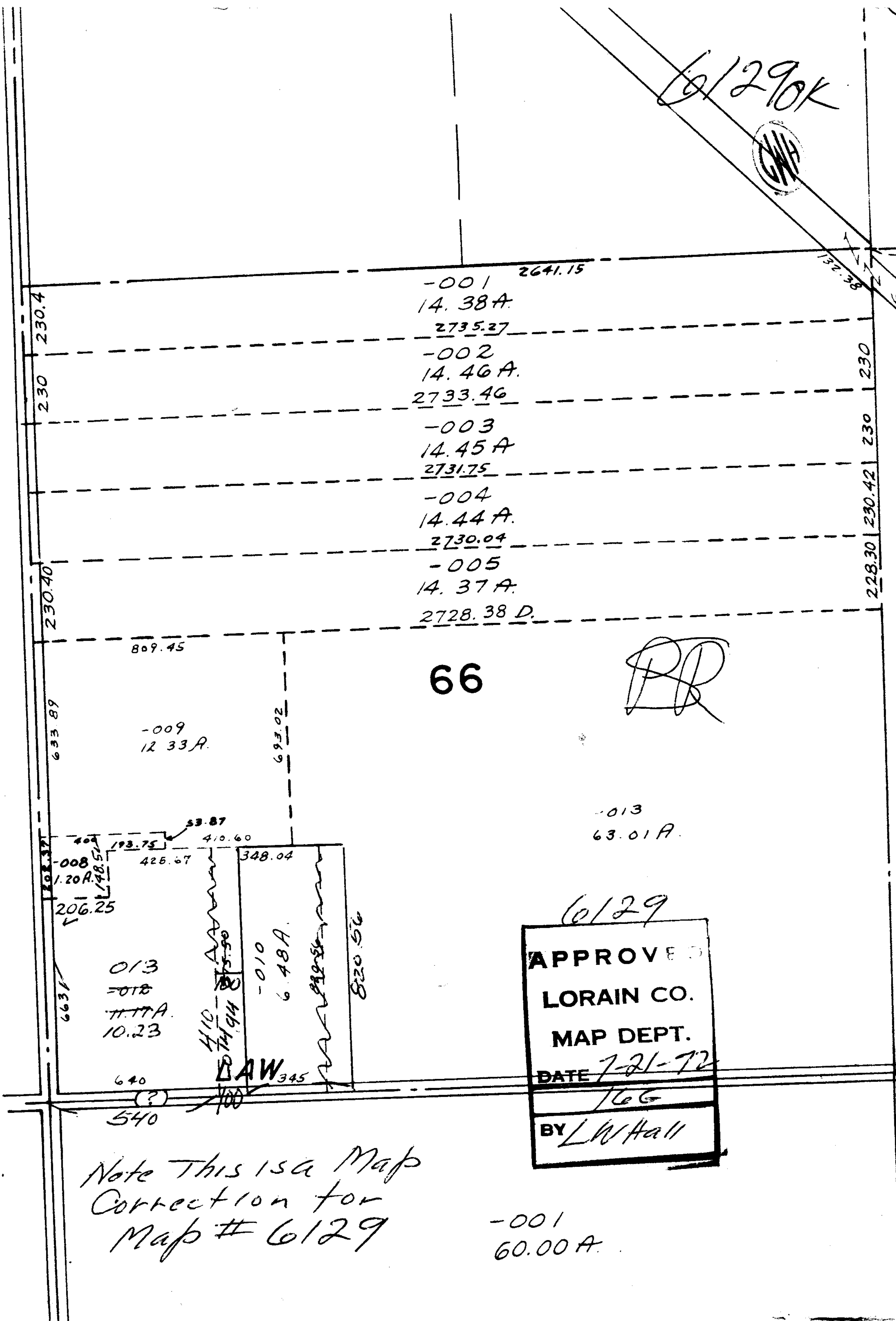


6129K



-001 2641.15
14.38 A.
2735.27
-002
14.46 A.
2733.46
-003
14.45 A.
2731.75
-004
14.44 A.
2730.04
-005
14.37 A.
2728.38 D.

809.45

66

PR

-009
12.33 A.

-013
63.01 A.

53.87
410.60
193.75
400
425.67
348.04
-008
120.8
198.5
206.25
663
640
640
540
410
714.94
875.50
100
LAW 345
-010
6.48 A.
820.56

6129
APPROVED
LORAIN CO.
MAP DEPT.
DATE 7-21-72
/LG
BY LWHall

Note This is a Map
Correction for
Map # 6129

-001
60.00 A.