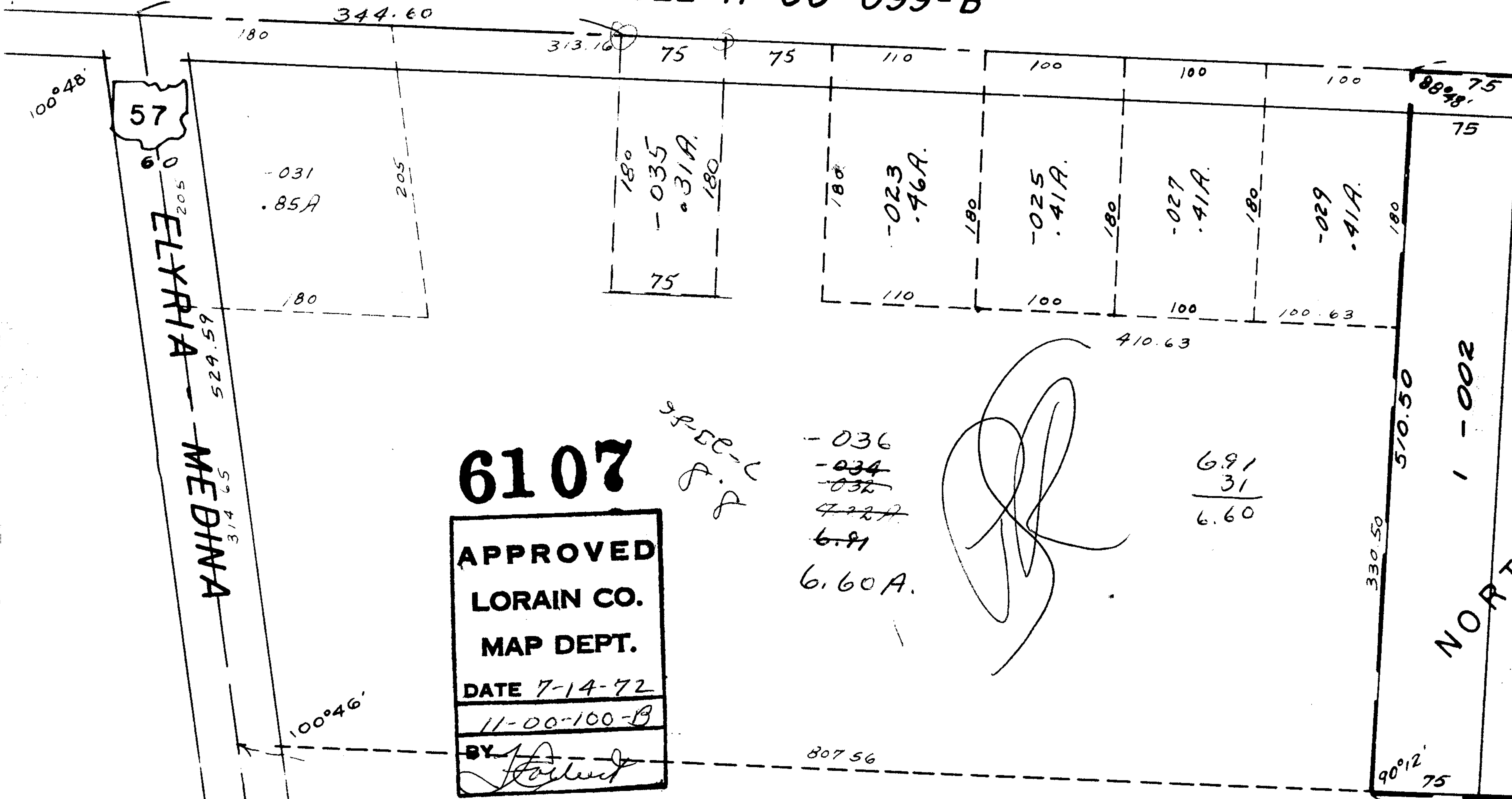


6107



419.60
75
344.60

SEE 11-00-099-B



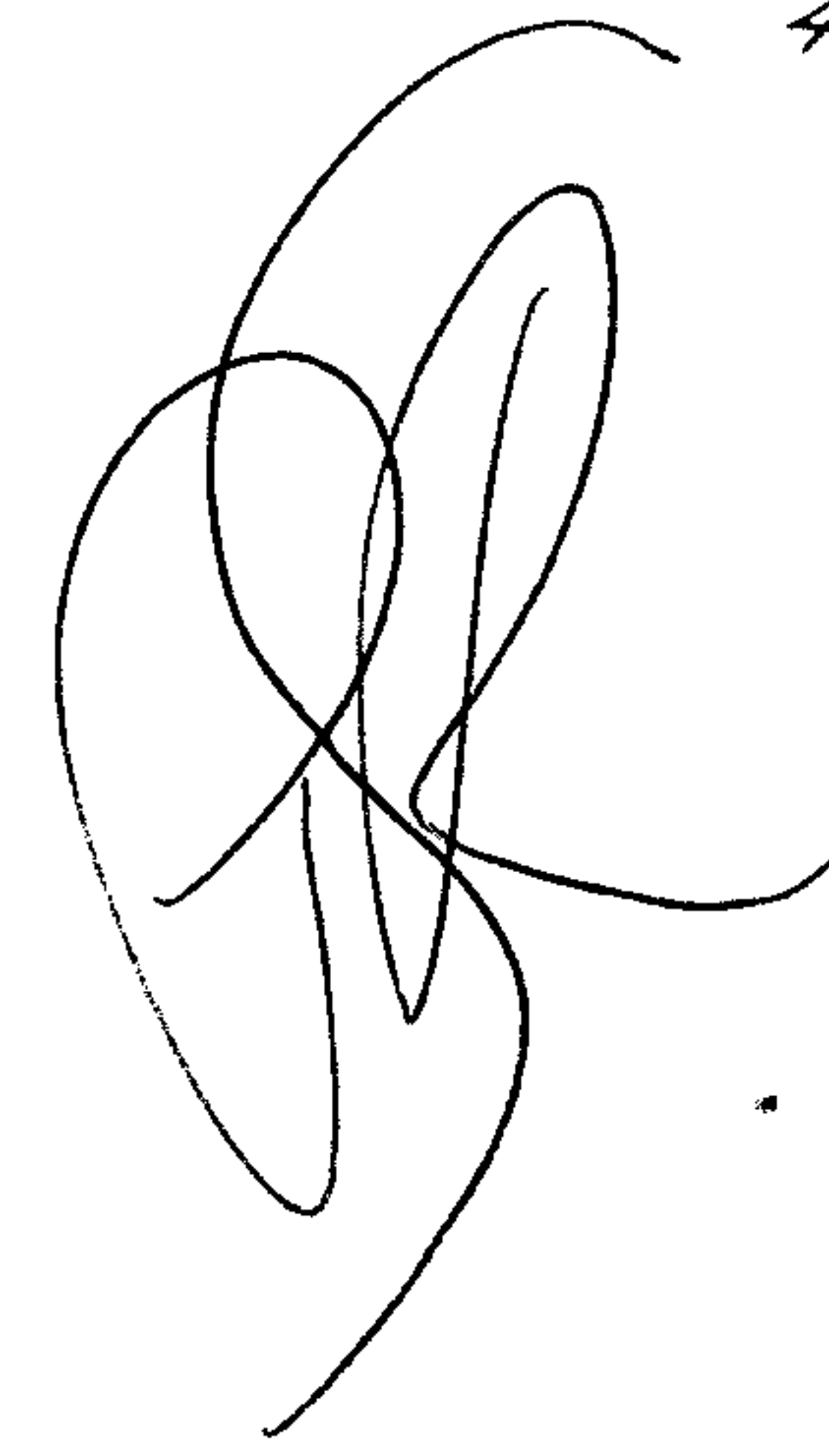
6107

APPROVED
 LORAIN CO.
 MAP DEPT.
 DATE 7-14-72
 11-00-100-B
 BY *[Signature]*

*SP-50-C
P.P.
P*

-036
-034
~~-032~~
4.22A
6.91
6.60A.

6.91
31
6.60



100°48'

57

ELYRIA
MEDINA

-031
.85A

180
-035
.31A
180
75

180
-023
.46A
180
110

180
-025
.41A
180
100

180
-027
.41A
180
100

180
-029
.41A
180
100.63

-021
5.94 A.

333.76
333.52

100°46'

807.56

330.50

90°12'
75

NOPT
1-002