

6106
OK

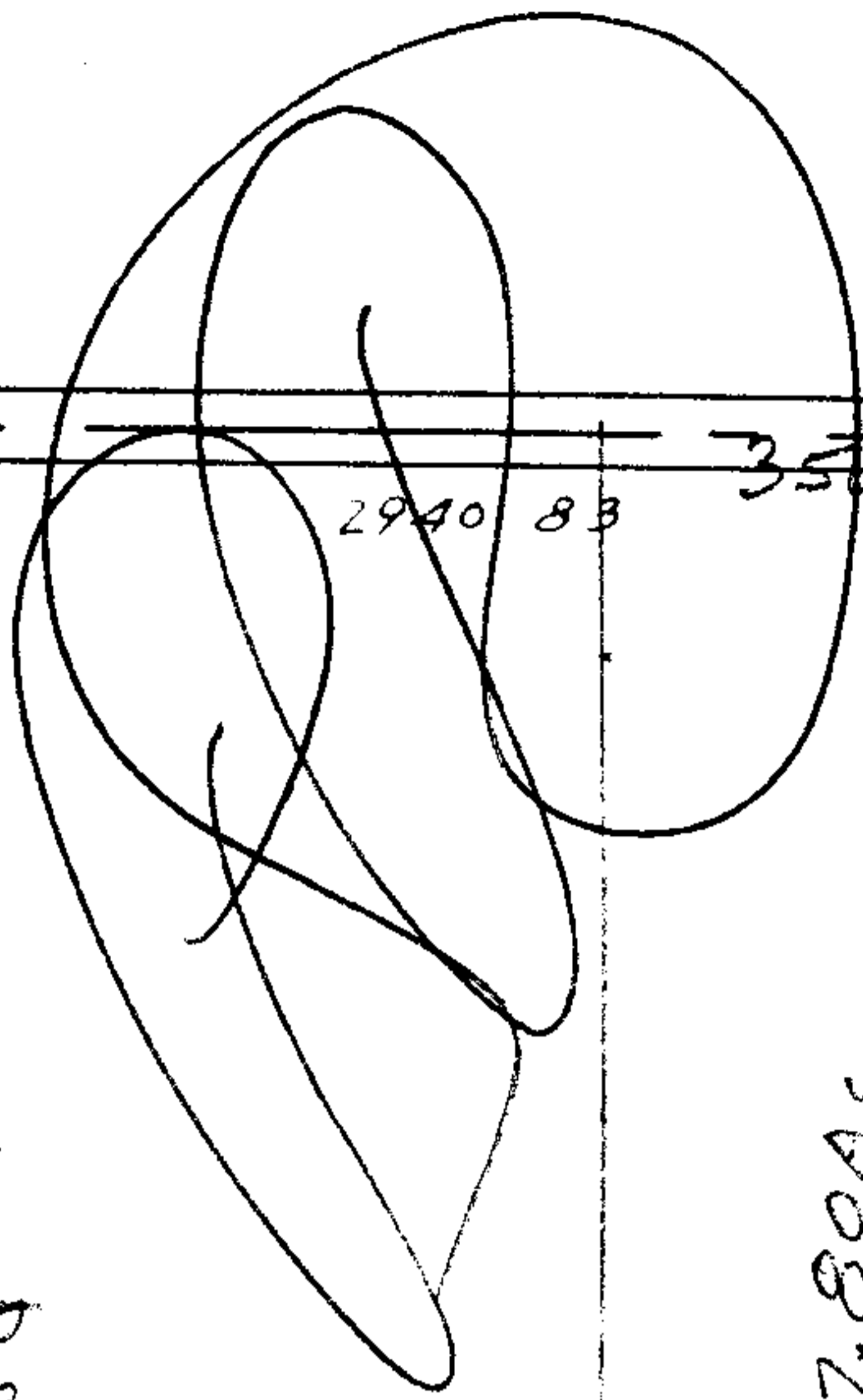


200
99104
-010 891A
9910
200

6106
APPROVED
LORAIN CO.
MAP DEPT.
DATE 7-14-72
BY LWH/11

APPROVED
LORAIN CO.
MAP DEPT.
DATE 7-14-72
BY LWH/11

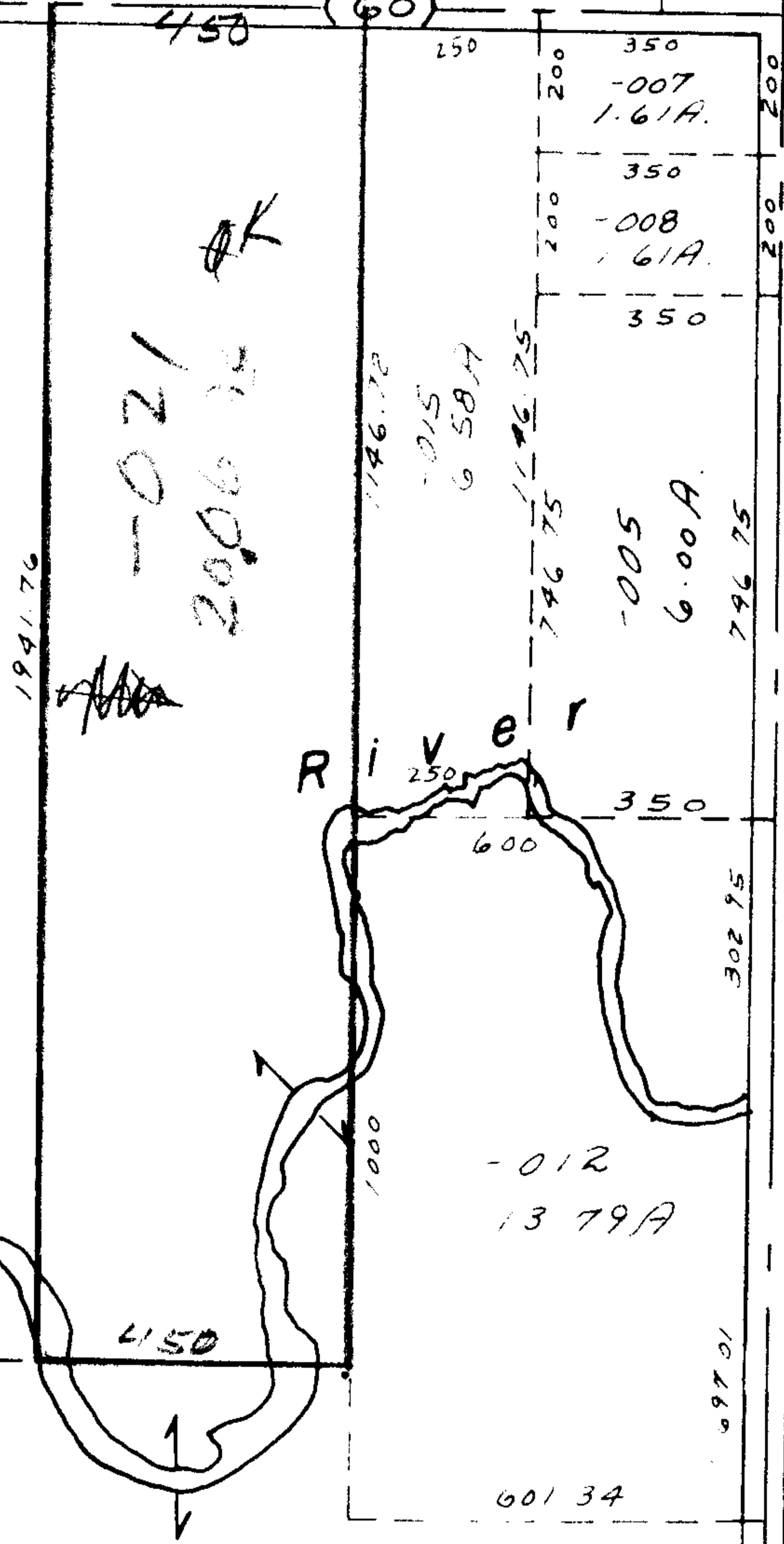
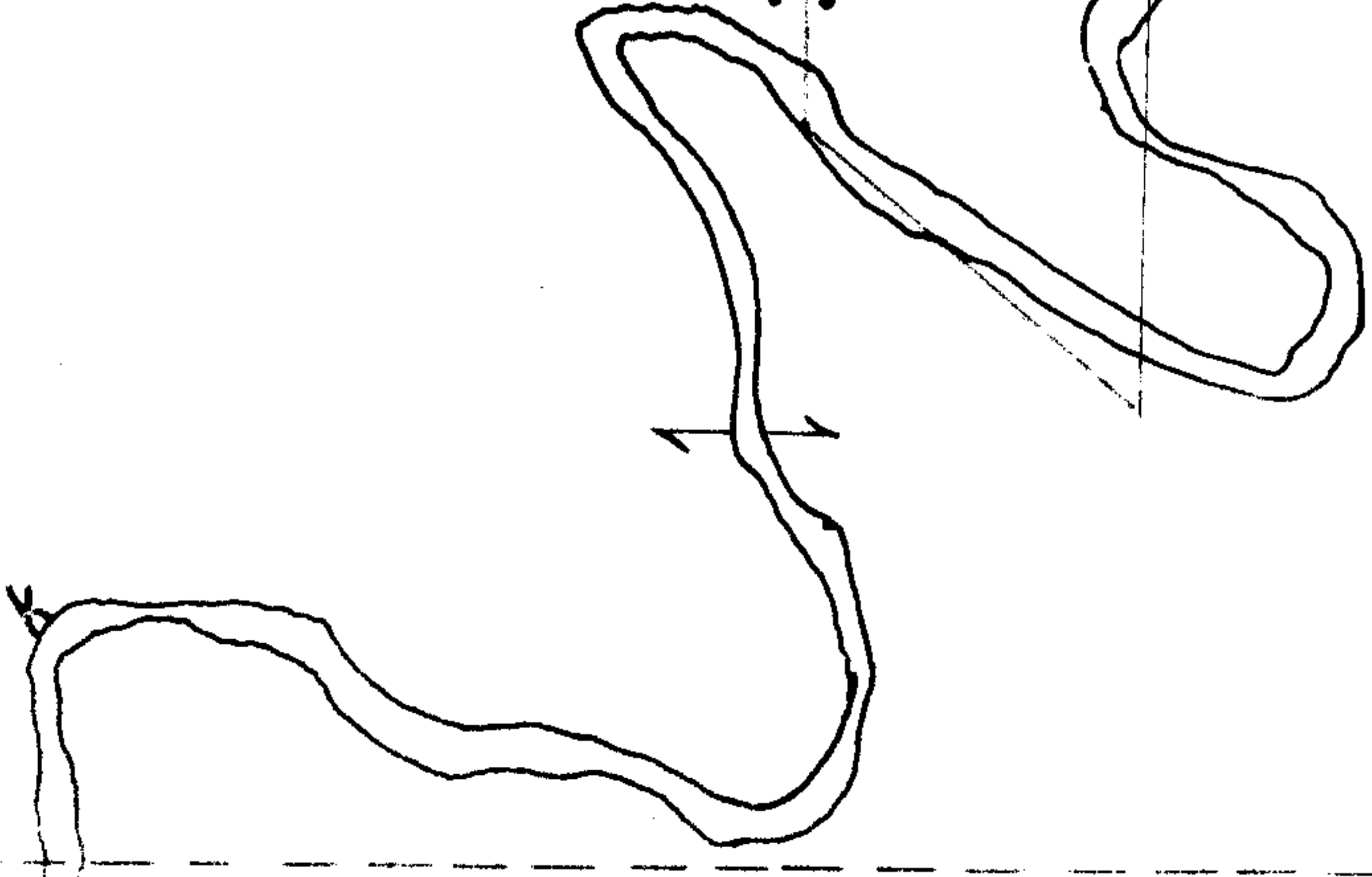
022
-820
-818
-103-18 A.
156.76
136.164



2940 83 350
21.11.72

OK -019
17,80AC
2387.10
1941.64
-017
15.60A.
OK

41



-013
7132A

RD

175
-007
1.61A.
-008
1.61A.
-005
6.00A.
769.34
-007
3

SEE 18-B