

5972

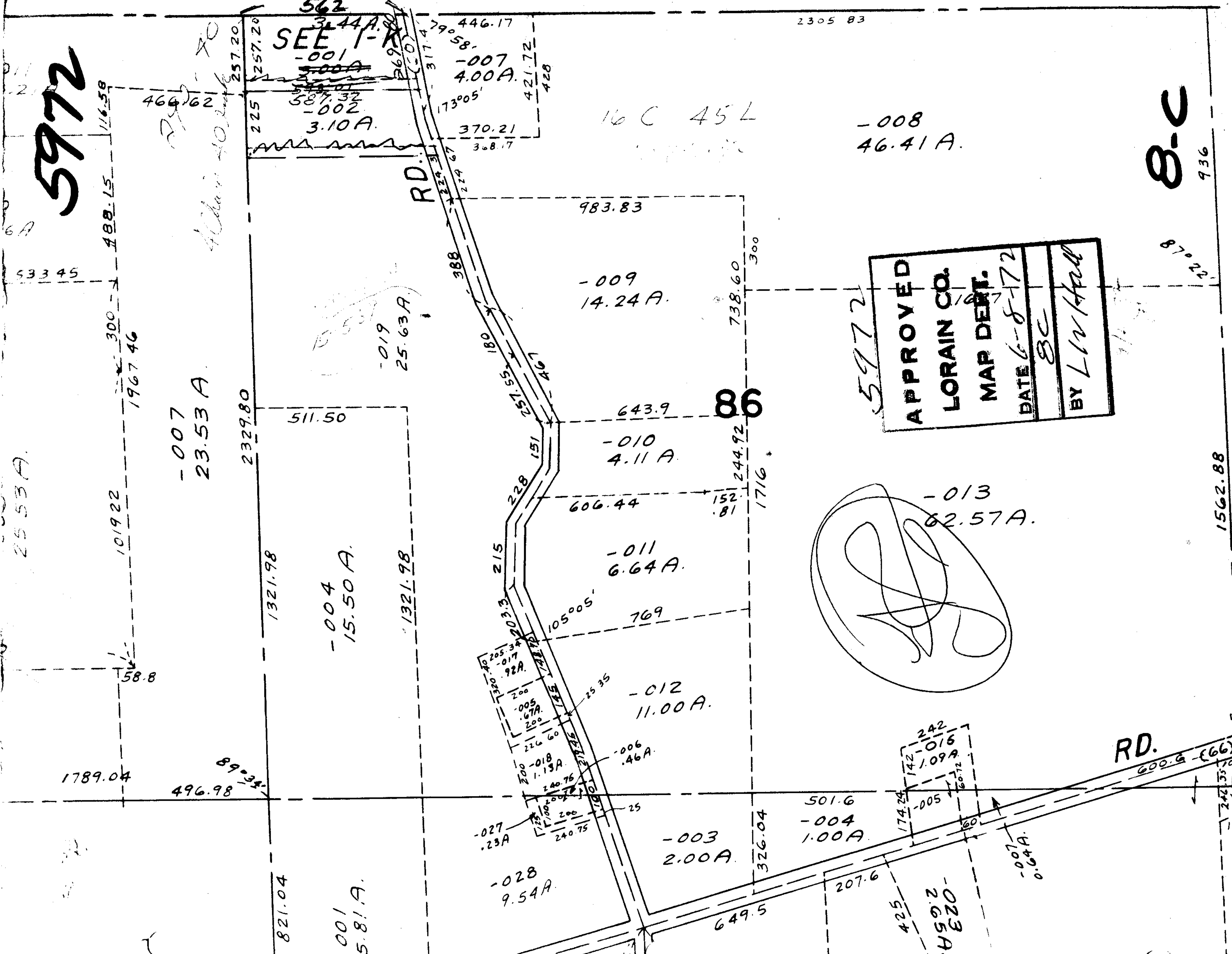
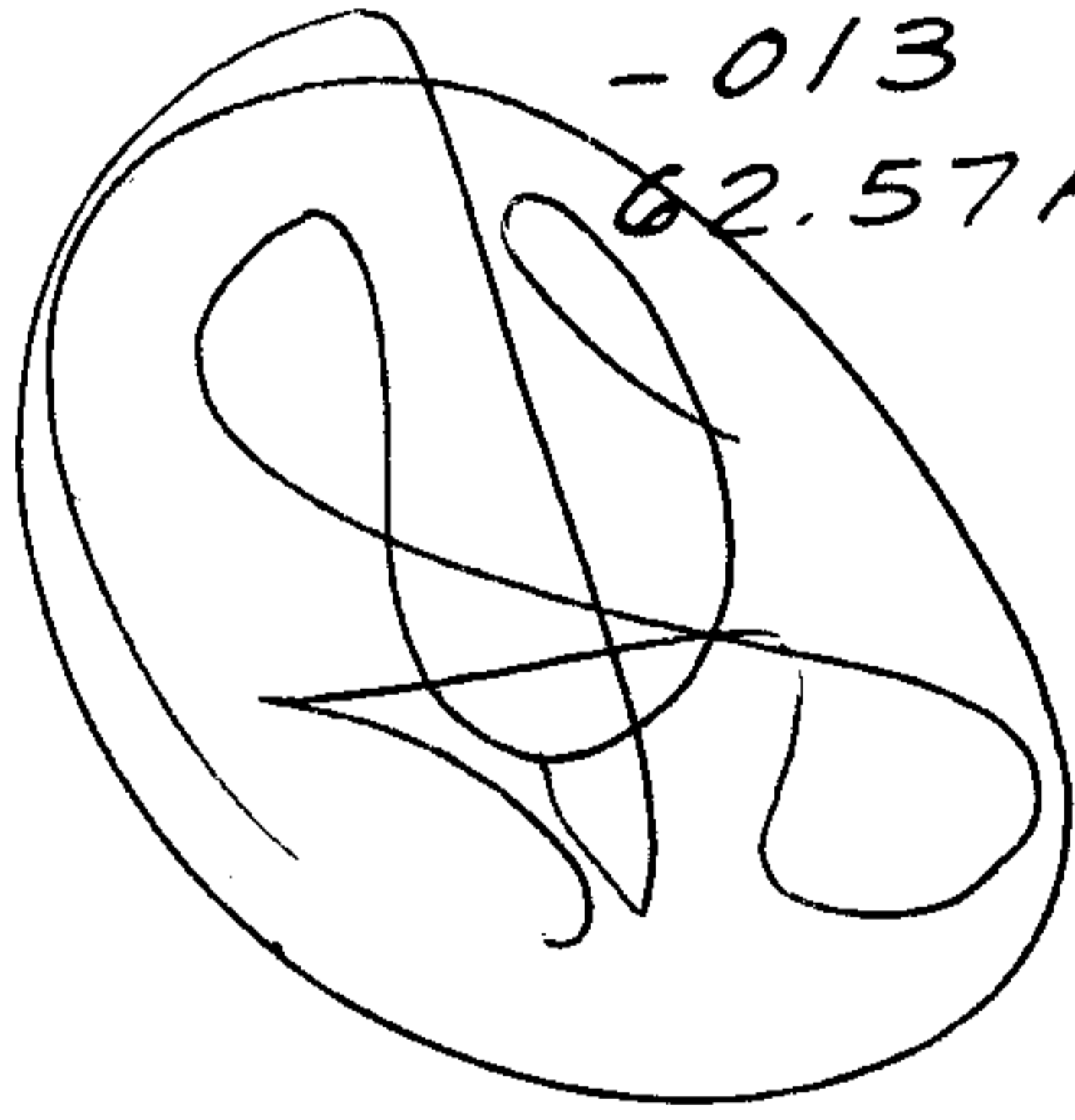
562
3.44A
SEE 1-
-001
-002
3.10A
-007
4.00A
421.72
428
370.21
308.17
73°05'

16 C 45 L

-008
46.41A.

8-C
936

5972
APPROVED
LORAIN CO.
MAP DEPT.
DATE 6-8-72
BY L.V. Hall



25.53A.

-007
23.53A.

-004
15.50A.

-011
6.64A.

-012
11.00A.

-003
2.00A.

-023A
2.05A.

1562.88

RD.

2305 83

116.58

300
1967.46

1019.22

58.8

1789.04

496.98

821.04

-001
15.81A.

2329.80

1321.98

511.50

1321.98

-019
25.63A.

205.34
-017
92A.

-018
1.19A.

-006
.46A.

-027
.23A.

-028
9.54A.

240.75

769

606.44

-010
4.11A.

643.9

983.83

-009
14.24A.

86

244.92

738.60

300

242
-016
1.09A.

-005

-007
0.64A.

207.6

649.5

326.04

501.6
-004
1.00A.

425

174.24

600.6 (66)

242.35
200
43.40
205

87°22'

936