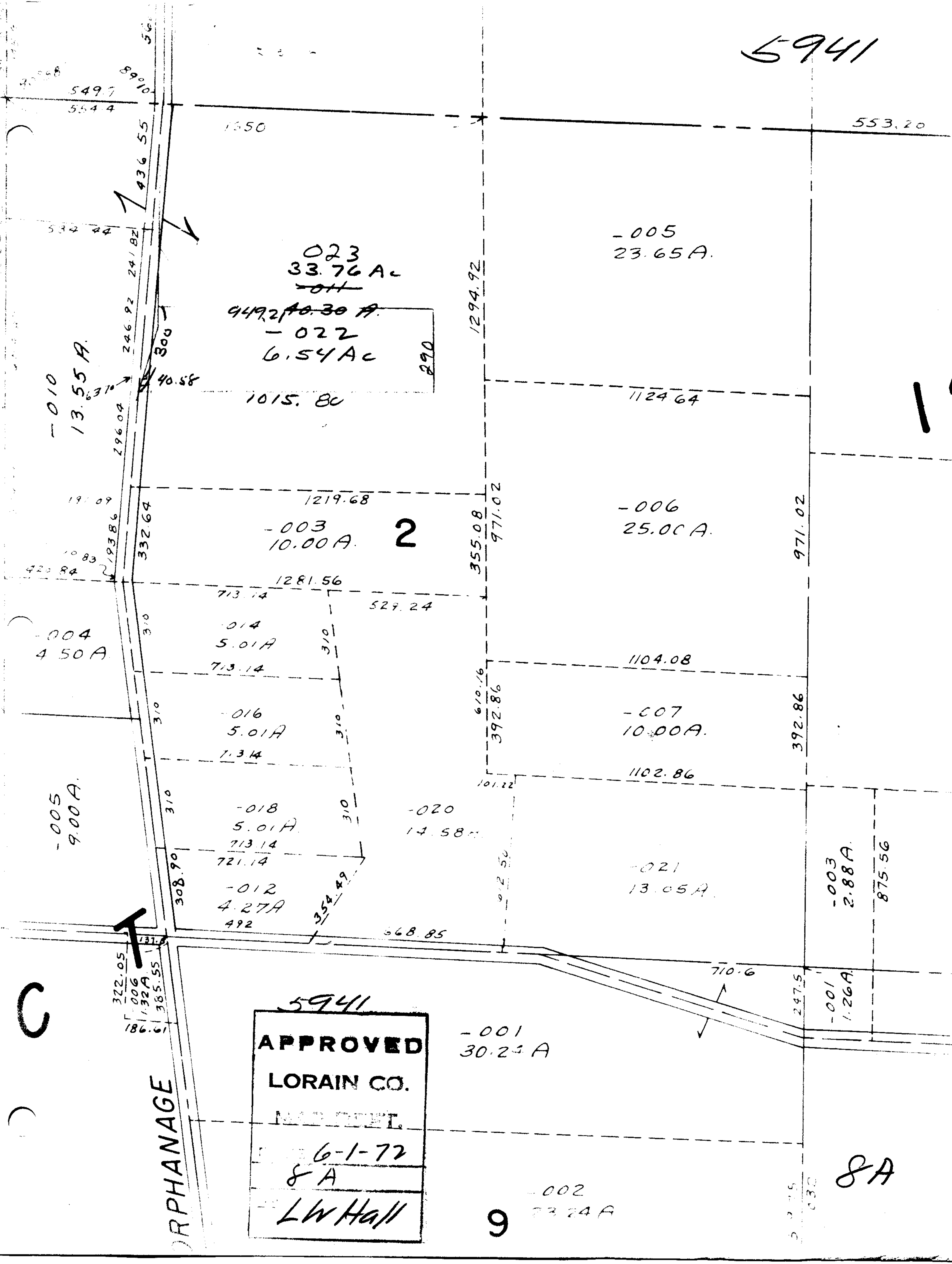


5941



023  
33.76 AC  
~~011~~  
449.21 AC  
-022  
6.54 AC  
290

-003  
10.00 A. 2

-014  
5.01 A  
713.14

-016  
5.01 A  
713.14

-018  
5.01 A  
713.14  
721.14

-012  
4.27 A  
492

-005  
23.65 A.

-006  
25.00 A.

1104.08

-007  
10.00 A.

1102.86

-020  
14.58 A.

-021  
13.05 A.

-003  
2.88 A.  
875.56

-001  
30.24 A

-002  
23.24 A

8A

5941  
**APPROVED**  
**LORAIN CO.**  
MAR 20 1972  
6-1-72  
8A  
LW Hall

ORPHANAGE

C

9

830