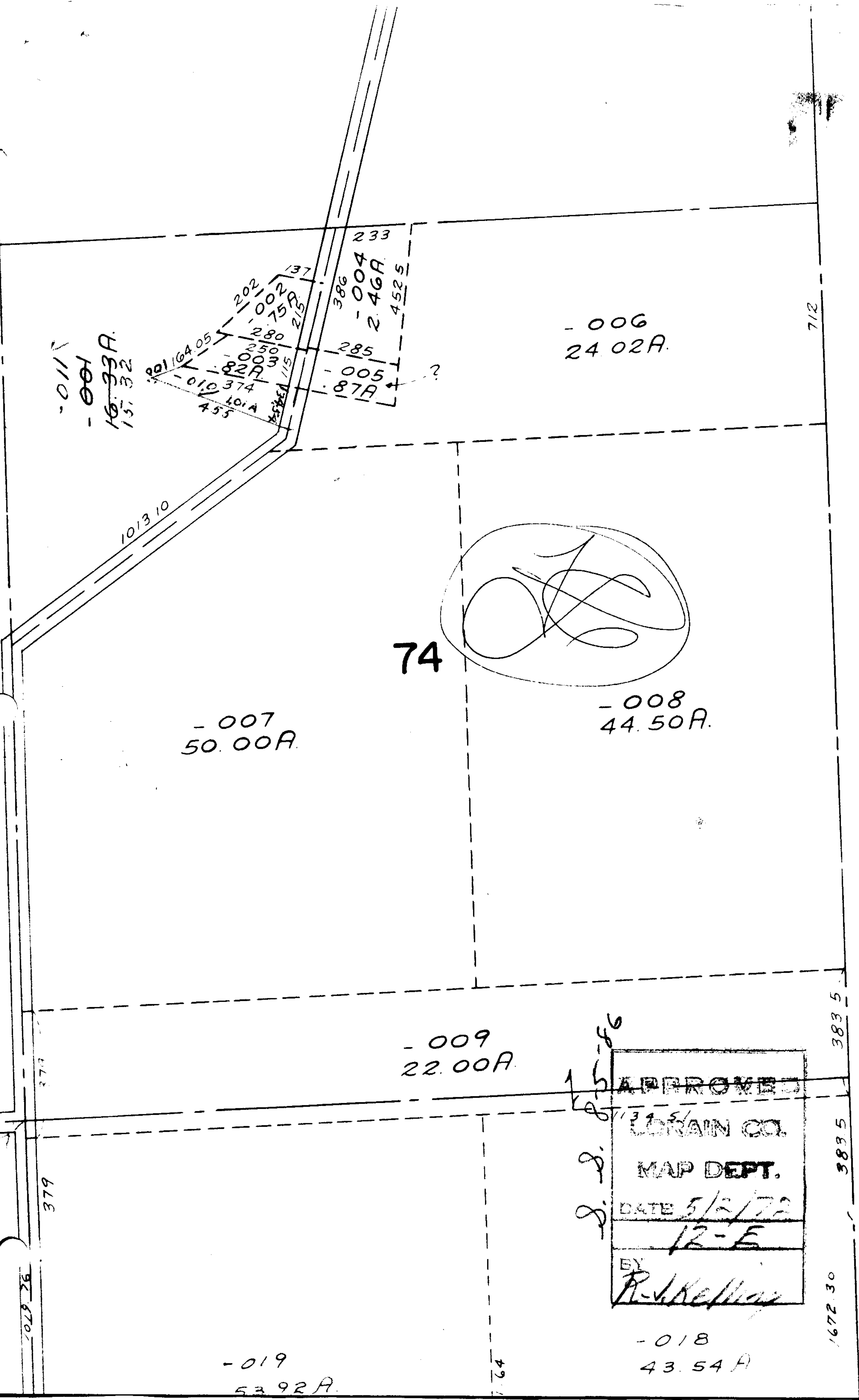


5863

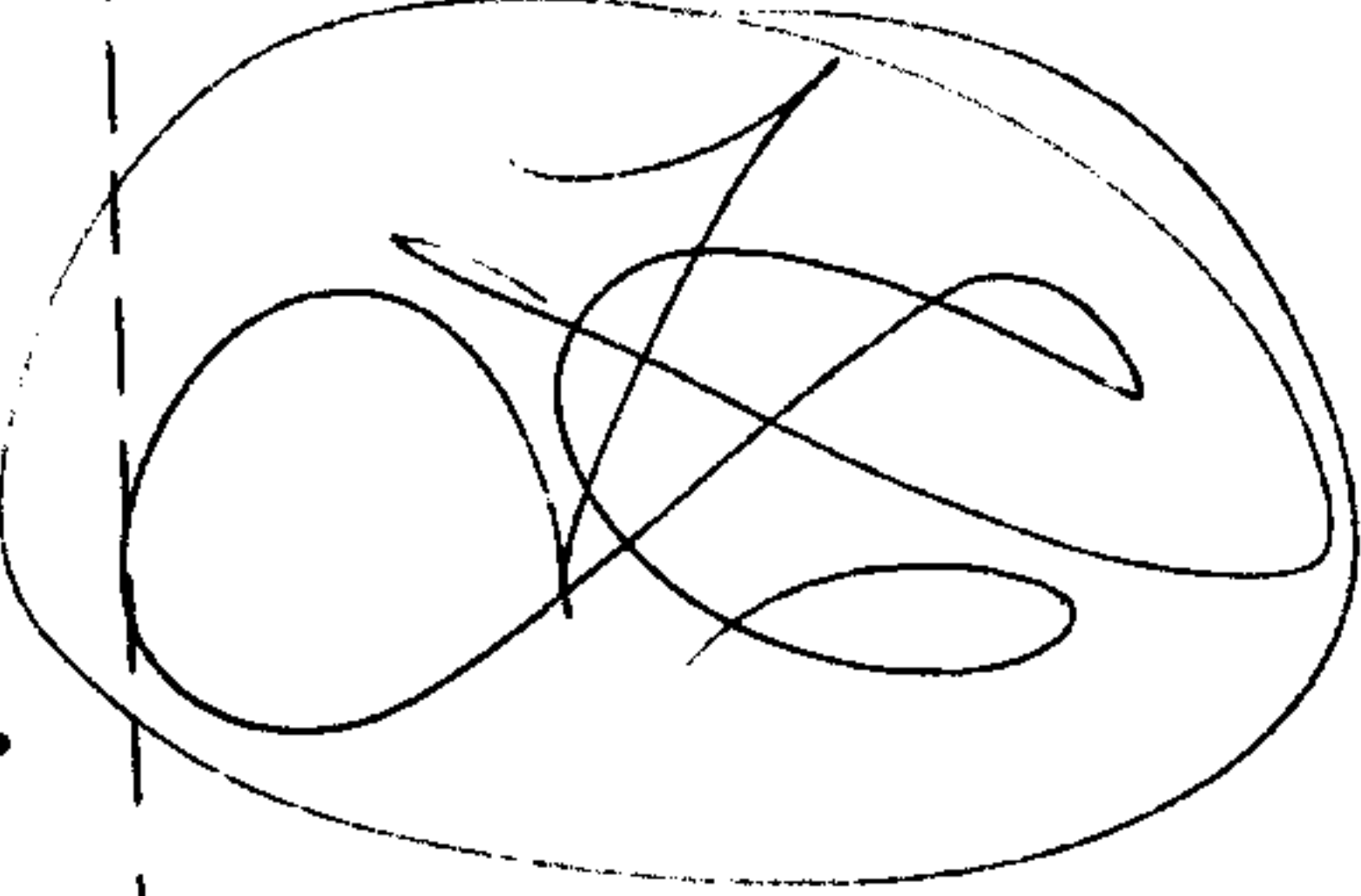


-011
-001
16.33A.
15.32

164.05
202
100
150
137
280
250
33
82A
019
374
101A
455
386
233
-004
2.46A.
452.5
285
-005
87A

-006
24.02A.

74



-007
50.00A.

-008
44.50A.

-009
22.00A.

APPROVED
LORAIN CO.
MAP DEPT.
DATE 5/2/72
12-E
BY
R. J. Keenan

-019
53.92A.

-018
43.54A.