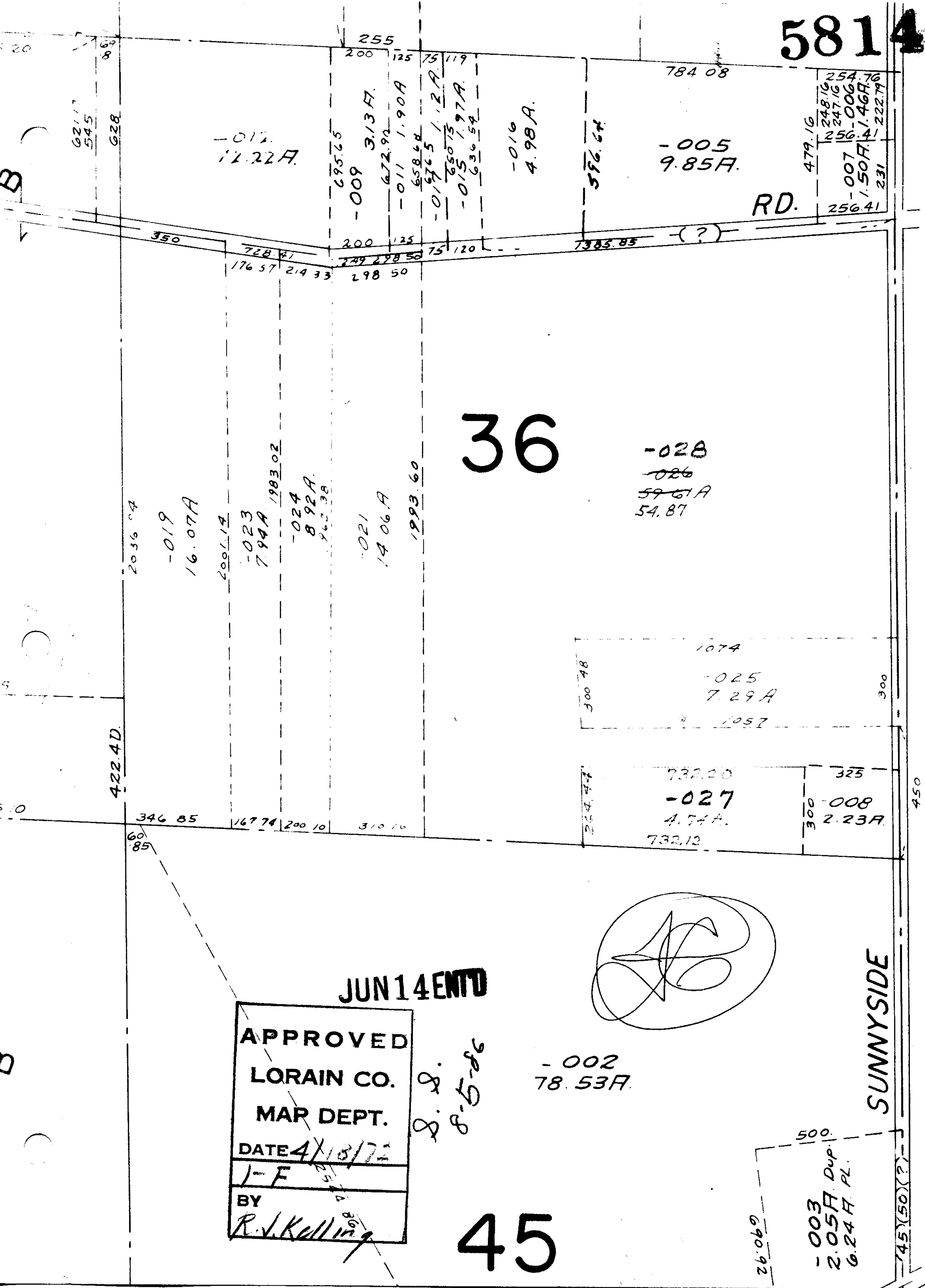


5814



-017
12.22A

-009
3.13A

-011
1.90A

-017
1.2A

-015
1.97A

-016
4.98A

-005
9.85A

RD.

-007
1.50A

36

-028
-026
59.61A
54.87

1074

-025
7.29A

1057

732.20
-027
4.74A
732.12

-008
2.23A

S

-002
78.53A

SUNNYSIDE

APPROVED
LORAIN CO.
MAP DEPT.
 DATE 4/18/72
 J-F
 BY R.V. Kelling

S.S.
8-5-86

45

-003
2.05A Dup.
0.24A PL.