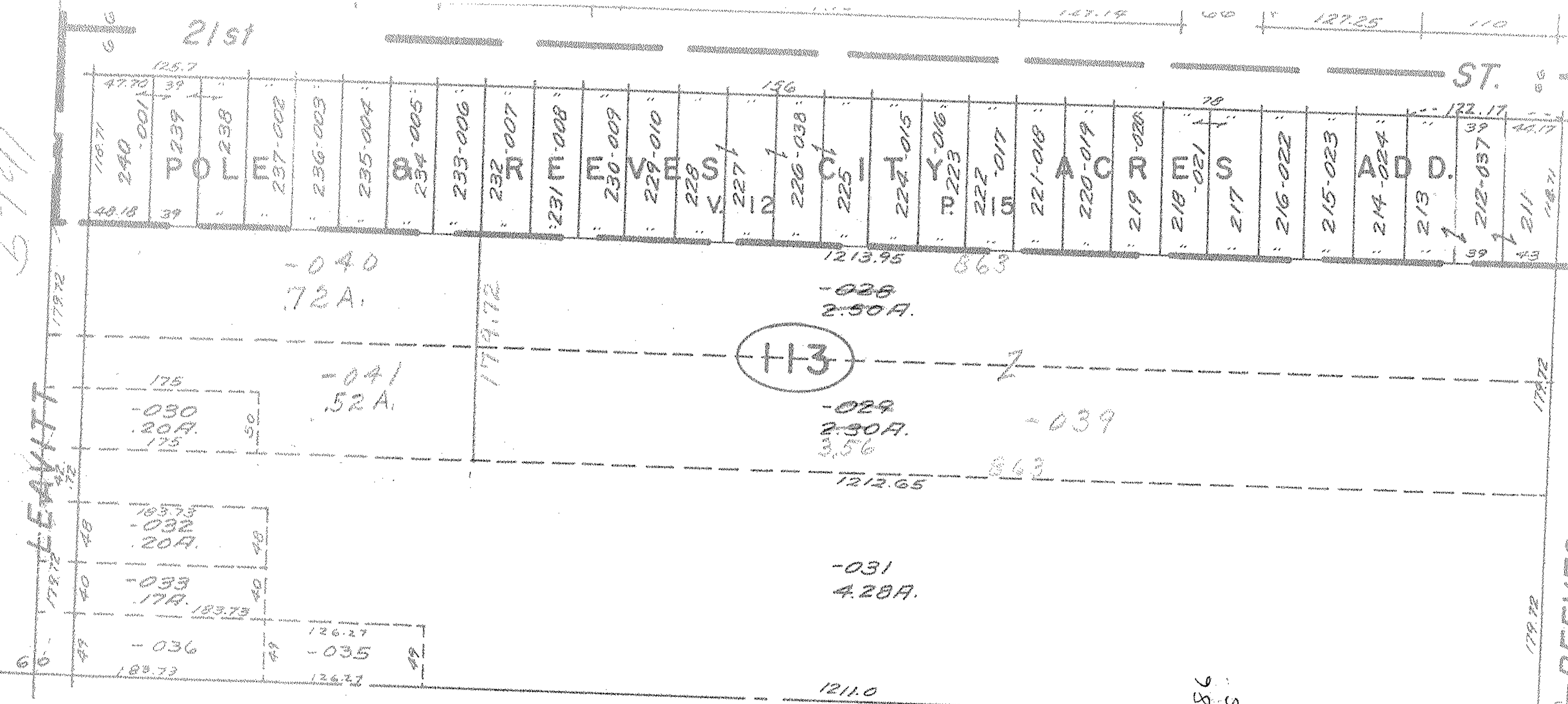


21st

ST.

5791



-040
72A.

-041
52A.

-028
2.90A.

-029
2.90A.
3.56

-039

-031
4.28A.

SEE 2-02-017-A

7-18-86
S.S. LIND
JUN 1 5 1986

[Signature]

5791

APPROVED
LORAIN CO.
MAP DEPT.
DATE 4/10/72
2-02-024-A
BY <i>R. Kelling</i>

BLACK RIVER TWP.

SCALE: 1" = 100'

TRACT 2

W. PT.