

13
57A

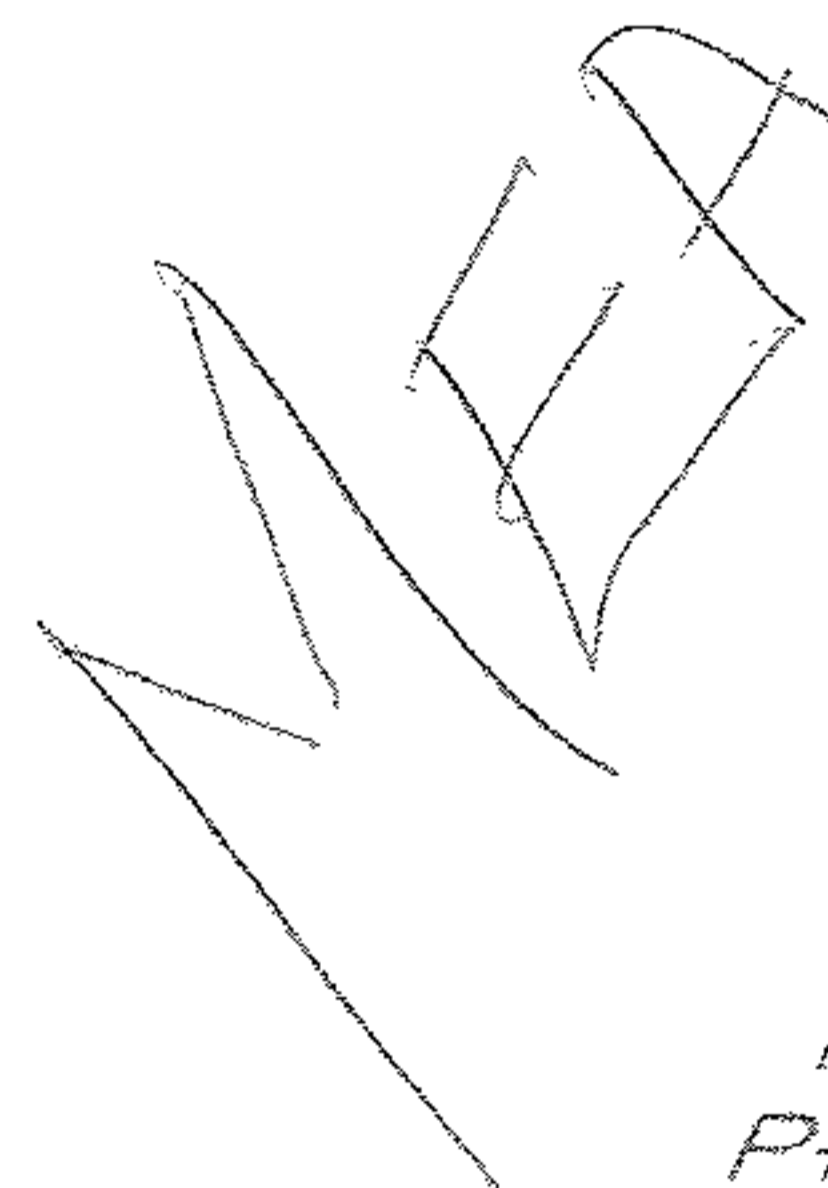
3761.16
3737
8.59 A
3737

003

1425

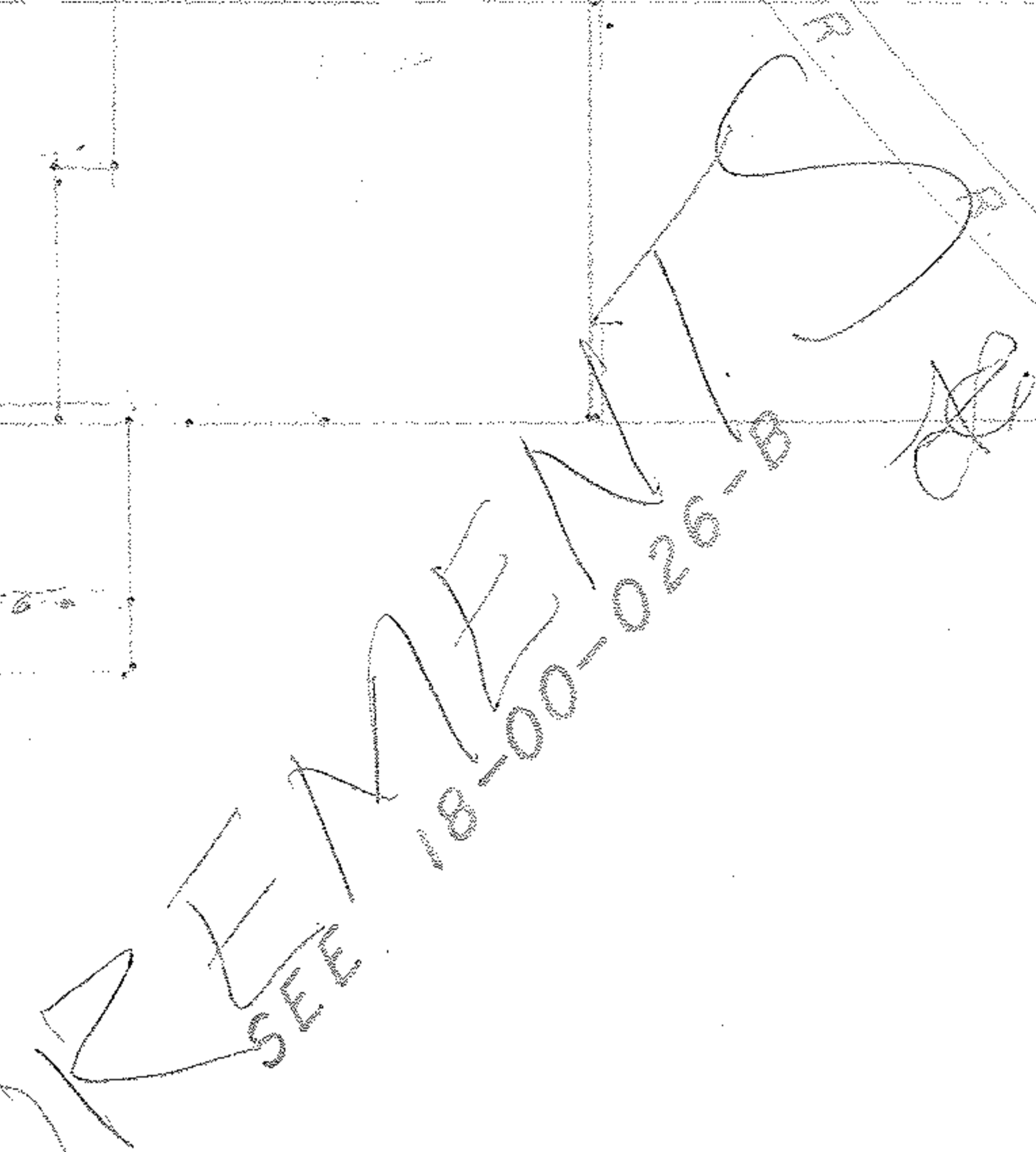
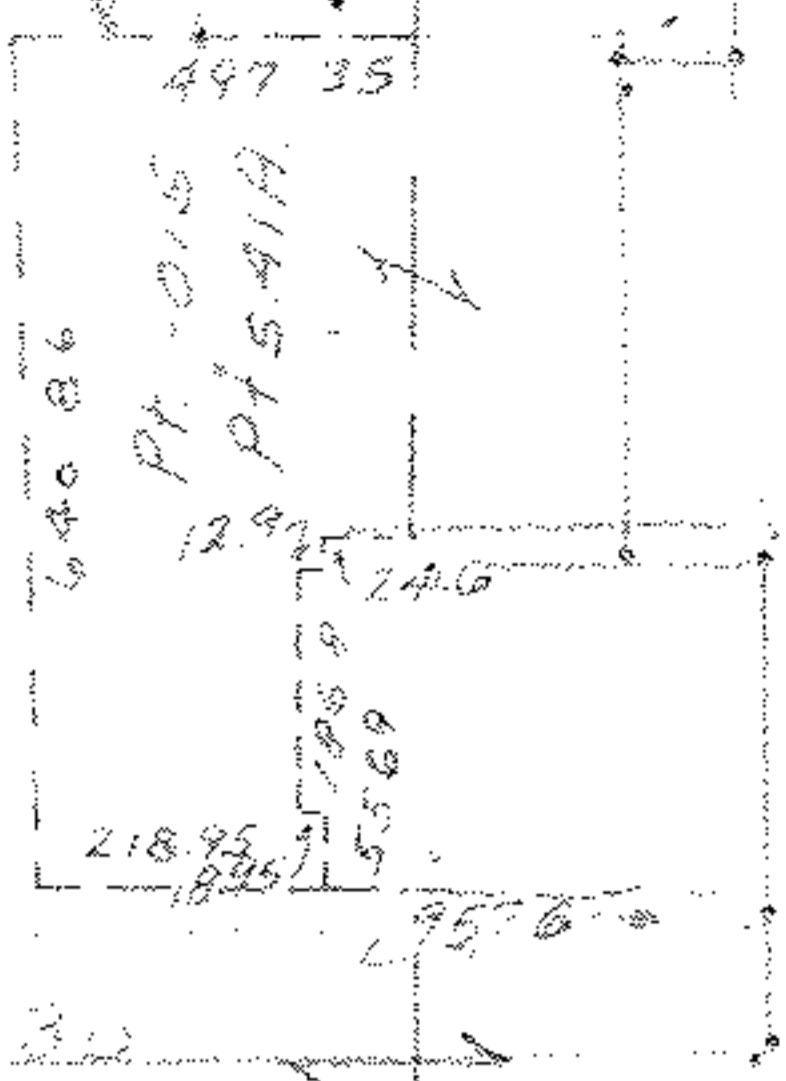
101

26



- 020
Pt. - 516
Pt. 184-39 A
164.66

Pt. 13.76
Pt. - 019



SEE 18-00-026-B

APPROVED
LORAIN CO.
MAP DEPT.
DATE 3/23/72
18-00-026-B
BY 18-F
R. Kelling

5745
5746

RD.