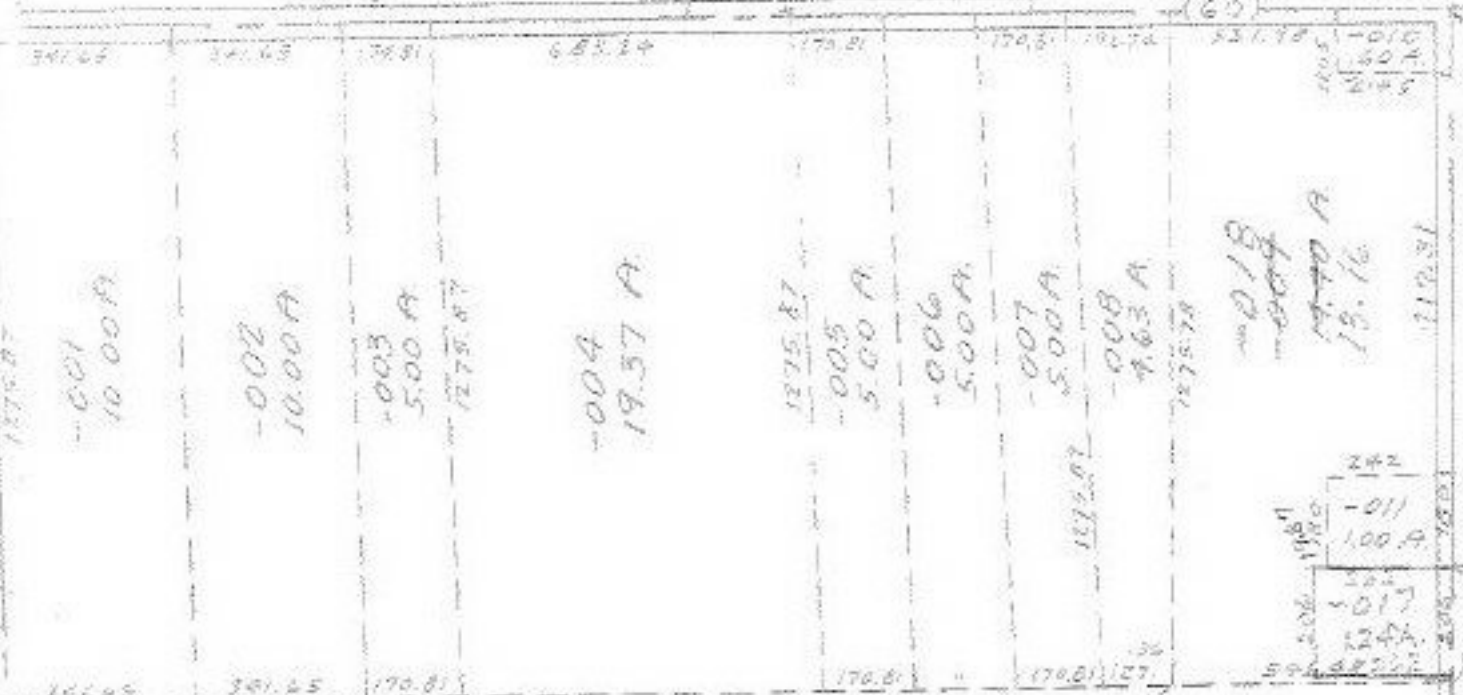


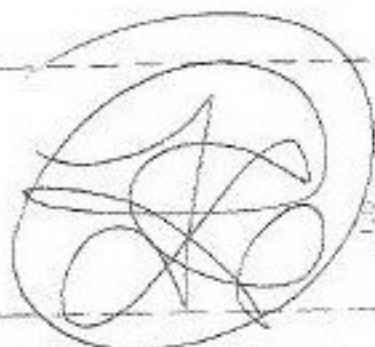
RD.



27

-012 50.00 A.

-016 29.3 A.



014 6.00 A
-001 4.00 A.

-002 20.00 A.

-003 40.00 A.

8-4-96

APPROVED
LORAIN CO.
MAP DEPT.
DATE 3/14/72
9-C
BY P.J. Kelling

APR GENTD

Out of Scale

1275.18 1097.37

782.55

