

5708

APPROVED

LORAIN CO.

MAP DEPT.

DATE 3/15/72

16-17

BY R. L. Williams

APR 6 1972

54 H
75 G

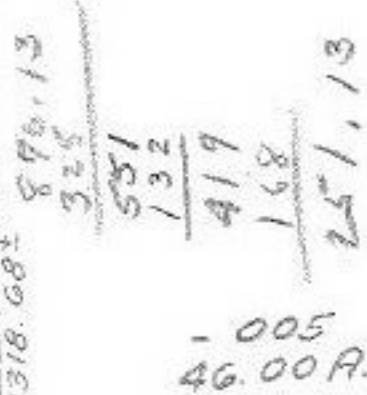
27.97
37.9

3773.66

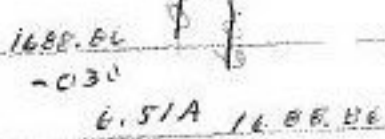
90° 31' 59" 89° 14'



-031
38.40A.



1533.40
1401.40

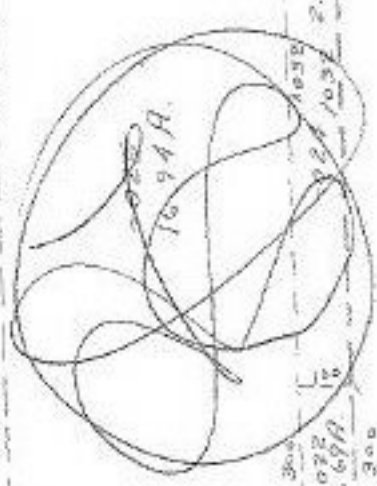
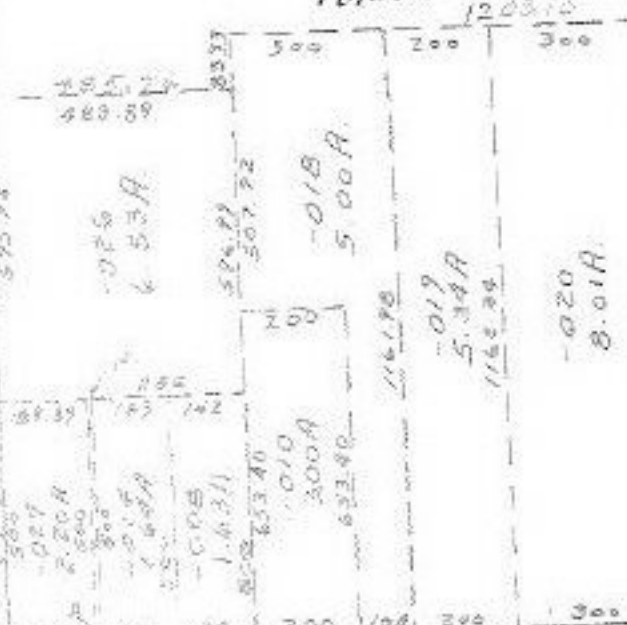


-029
5.12A 16.88.86
-02B
10.28A

48

1076.40

ISLAND



MEDINA - ELYRIA

GRAFTON TWP.

103