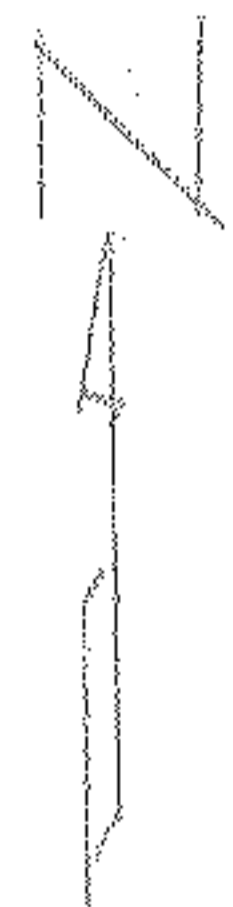
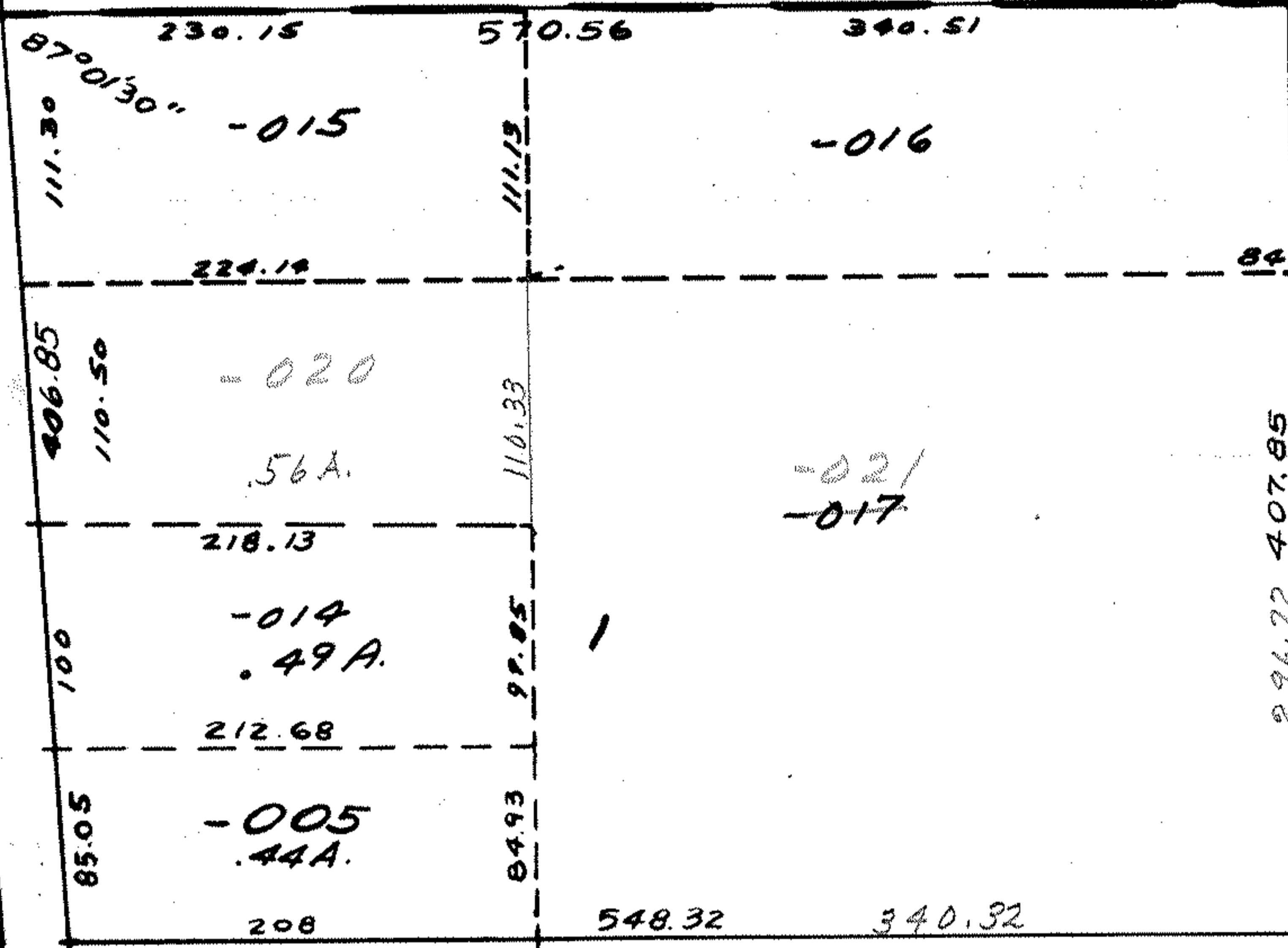
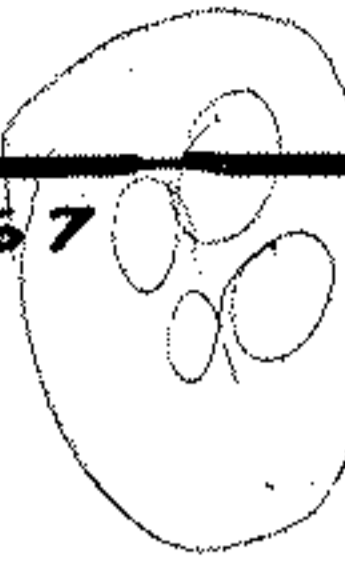


RD. 5200

-001

2.15A.



K

50

WEST - PARK

407.85  
 111.13  
 296.72

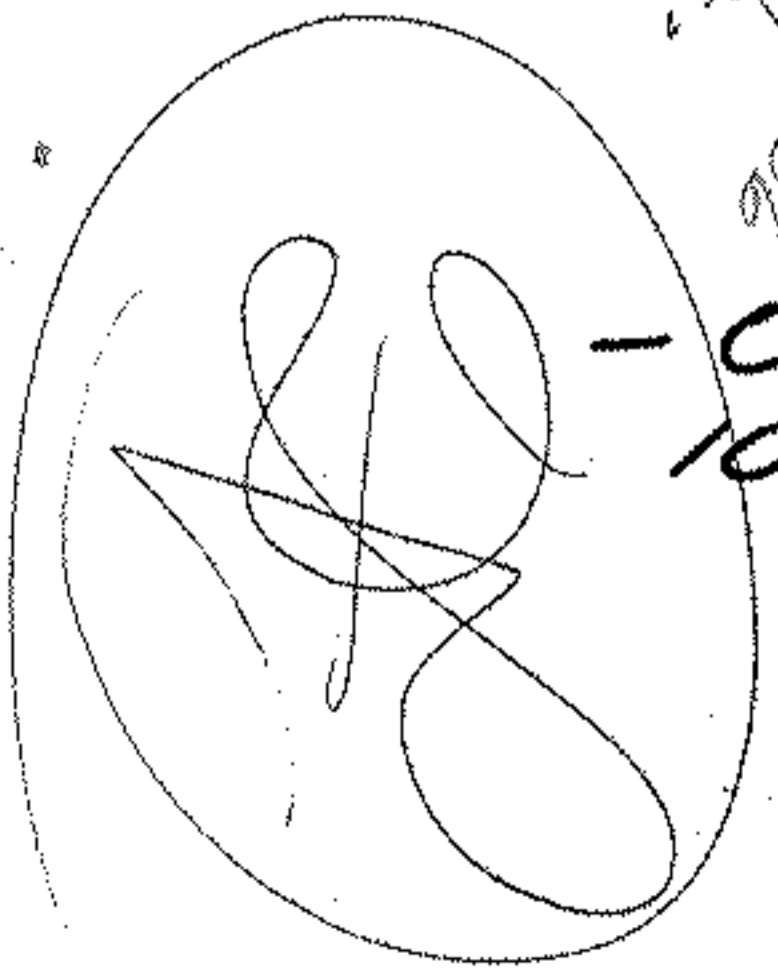
548.32  
 208.00  
 340.32

312.47

287.43

86°52'

MAR 29 ENT'D



17.7  
 98-18-6 (SS)

-001  
 10.22

APPROVED
LORAIN CO.
MAP DEPT.
DATE 3/8/72
4-06-014-C
BY R.J. Ke. 4/29

750