

3-00-034A

ON THE S. SIDE OF LAKE

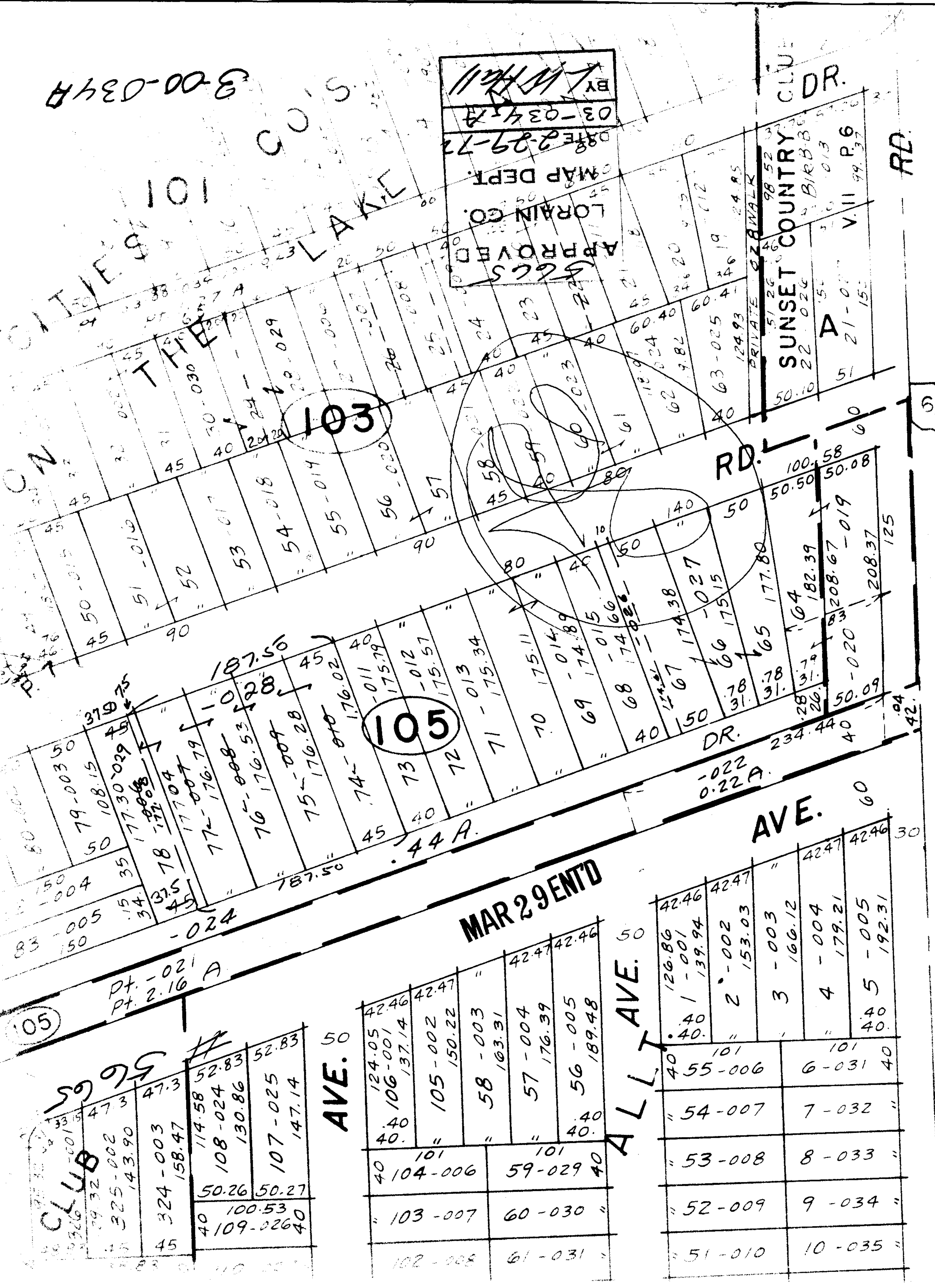
APPROVED  
LORAIN CO.  
MAP DEPT.  
DATE 2-29-72  
BY [Signature]

CLUE  
DR.

SUNSET COUNTRY  
PRIVATE WALK  
50.10 22.026  
51.52 46.98.52  
51.52 46.98.52  
A 21-01  
V. 11 99.37

RD.

6/2



CLUB  
325-002  
143.90  
324-003  
158.47

47.3	47.3
50.26	52.83
100.53	52.83
109-026	147.14
40	40

104-006	101	124.05	42.46
103-007	101	106-001	42.47
102-008	101	137.14	42.47
61-031	101	105-002	42.47
59-029	101	150.22	42.47
58-003	101	103.31	42.47
57-004	101	176.39	42.47
56-005	101	189.48	42.47

55-006	101	126.86	42.46
54-007	101	139.94	42.47
53-008	101	153.03	42.47
52-009	101	166.12	42.47
51-010	101	179.21	42.47
40	101	192.31	42.46

(SEE 3-00-033-A)