

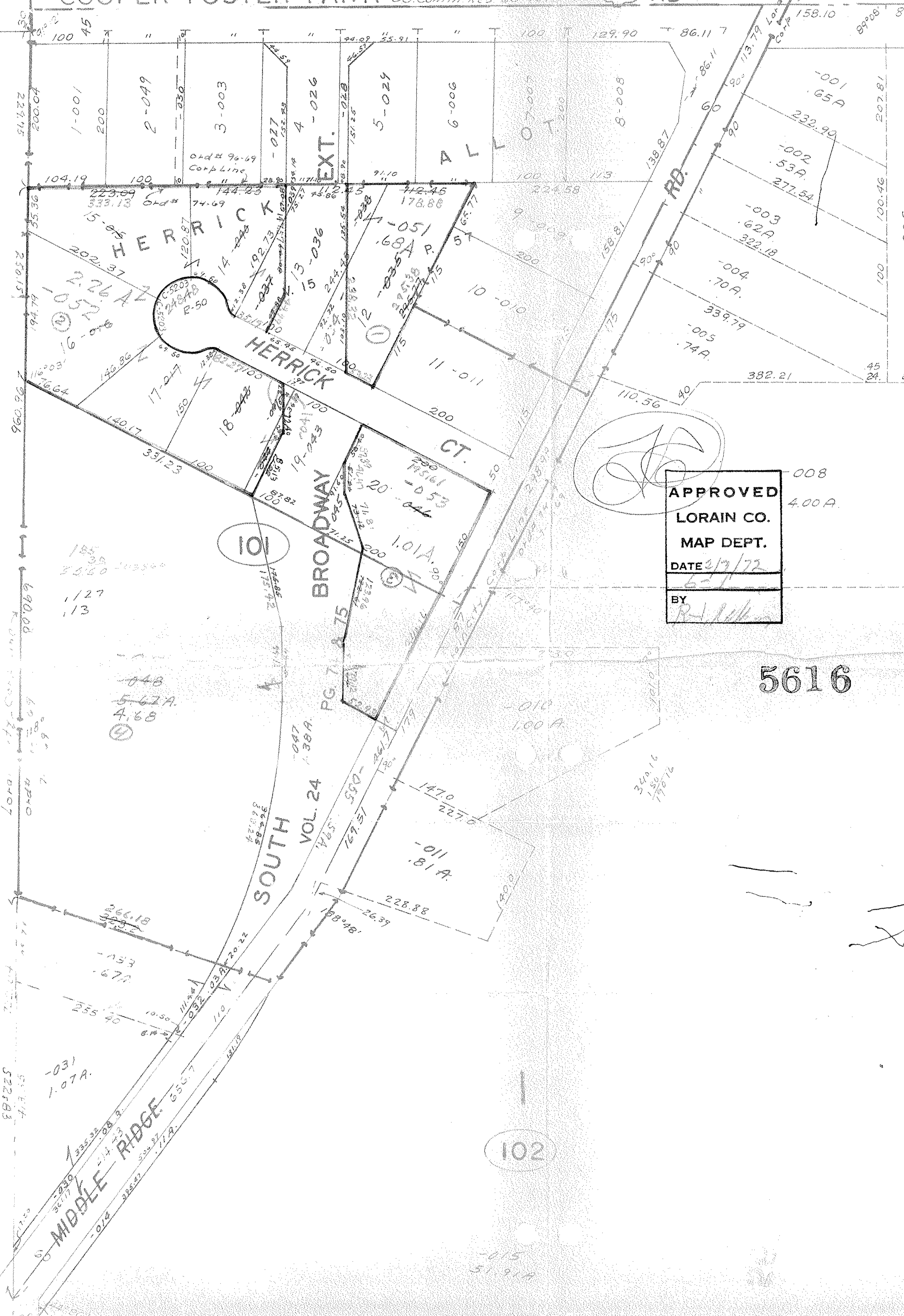
Co. Comm Res 69-216  
Ord # 96-69 7-17-69  
Lorain City Corp Line

SEE 3-00-113-A

254 RD

COOPER FOSTER PARK

Co. Comm Res 68-191



APPROVED  
LORAIN CO.  
MAP DEPT.  
DATE 3/2/72  
BY [Signature]

5616

9199

SEE 5-00-081

MIDDLE RIDGE  
-014  
-031  
1.07A

102

X